



new!

PTC Product Focus: [A\) Cabling Design Option](#)

[B\) Introducing Windchill Archive](#)

new!

Tips of the Week: [A\) Part Level Simplified Representations](#)

[B\) How to Configure a Windchill Archive Server](#)

Announcements: [Most Recent Announcements](#)

Upcoming Events & Training Schedule: [Events & Training Schedule](#)

PTC Product Focus

Cabling Design Option

[Click Here To View](#)

[Back To Top](#)

PTC Product Focus

Introducing Windchill Archive

What is Windchill Archive

- Windchill Archive is an application aware archiving solution designed to support Windchill solutions.
- Windchill Archive consists of server and client components.
- The Windchill Archive server components consist of the Windchill Archive Server itself, as well as the Windchill Archive Management Console.
- The Windchill Archive client components consist of Java archive files that get installed against one or more Windchill instances.
- Windchill Archive supports archiving to a variety of long-term storage devices.

Windchill Archive Terminology

- **Archive Device**
 - A storage device/application designed specifically for the long-term storage of infrequently accessed content.
- **Archive Volume**

- A logical storage area, backed by an archive device, created within the Windchill Archive Server for the purpose of managing archived content.
- **Search Database**
 - A full-text index database created and maintained within the Windchill Archive Server for the purposes of allowing searches to be performed against archived content.

Overview

Archive and Purge allow you to remove data from your Windchill system while preserving a reasonable working set of data for end users. You have the ability to couple archive functionality with purge so that while data is removed from the production system, an archive of that data still exists to be retrieved as required.

In order to access the archive functionality, you must install Windchill Archive.

Windchill archive is aimed at:

- Selecting unused or rarely used data and moving it out of the system, while preserving it in alternate storage, and
- Getting archived data back in the online system when needed, in as near a condition as possible to the one at the time of archival.

Once data is archived, you must restore it in order to access it in the live system. Restore functionality is only available when Windchill Archive has been installed.

Windchill purge is aimed at:

- Supporting the deletion of unwanted data from the system, including both metadata and content.
- Selecting unwanted items based on selection criteria

Only earlier iterations can be purged. If some iterations of an item are archived, then the item cannot be deleted from the system.

Also, a purge and archive job will fail if some of the item iterations were purged by a purge job that was running previously. PTC recommends that you create rules and purge jobs in such a way that the same objects do not become targets of two concurrent purge jobs.

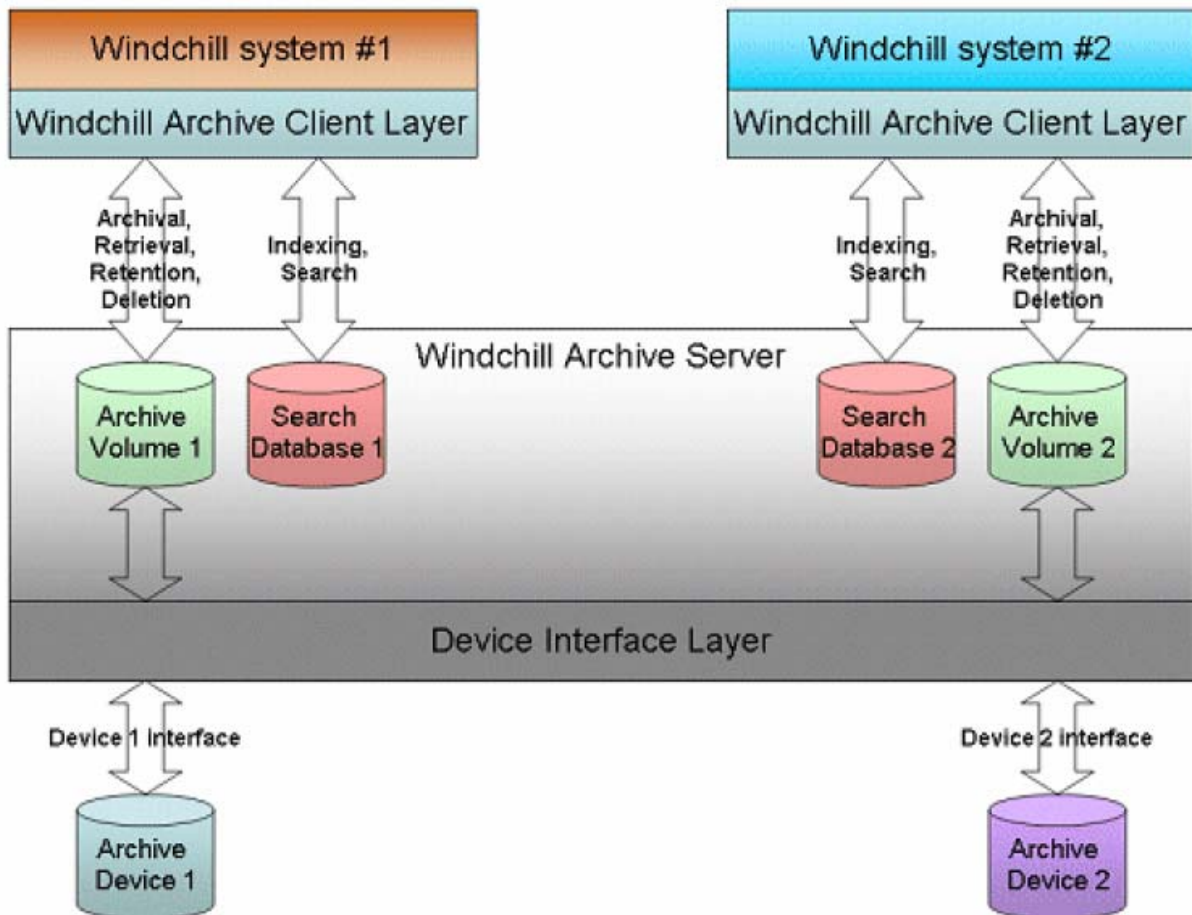
Alternately, failed jobs can be removed and recreated. If you are planning to purge a large number of items, you should plan to do so during time periods of low Windchill interactive user activity.

Externally Vaulted Content is not removed as a part of purge process; it only becomes unreferenced. Unreferenced content that is externally vaulted can be subsequently removed, possibly following a back-up operation, using the External Storage Administrator. The External Storage Administrator is a utility for administering external file vaults that you can access from the Site and Org Utilities page.

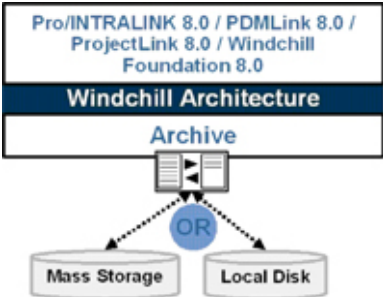
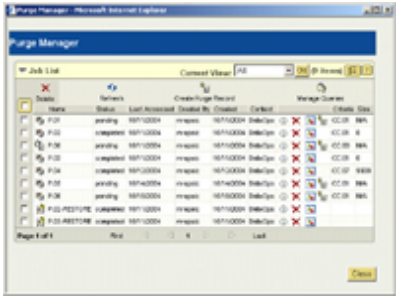
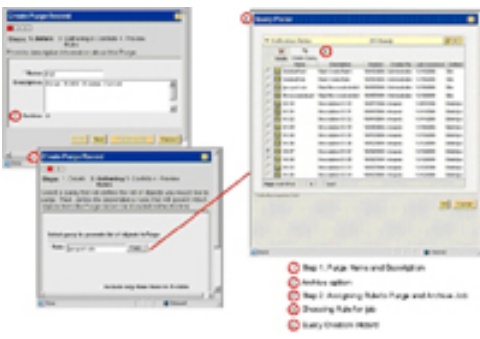
System Architecture

The Windchill Archive Server provides the following services:

- Archival of content to long-term storage
- Retrieval of previously archived content from long-term storage
- Management of retention periods for archived content
- Indexing of archived content
- Text-based searches against archives



Windchill Archive & Restore Review

<ul style="list-style-type: none"> • Reduces "clutter" of unnecessary data in system • Improves system performance • Provides compliance to industry regulations and corporate policies around data retention 	 <p>The diagram illustrates the Windchill Architecture. At the top, it lists the supported software: Pro/INTRALINK 8.0 / PDMLink 8.0 / ProjectLink 8.0 / Windchill Foundation 8.0. Below this is the 'Windchill Architecture' box, which contains an 'Archive' component. This component is connected via dashed lines to two storage options: 'Mass Storage' and 'Local Disk', with an 'OR' symbol between them, indicating a choice of storage location.</p>
<ul style="list-style-type: none"> • Purge, Archive, and Restore Manager • Provides a central dashboard for purge and archive tasks and management • Capabilities for creating purge jobs to permanently remove data and for creating an archive of the data to restore at a later time • Lists the purge and archive jobs with their status • Table Preferences Wizard for sorting and field display options • View chooser for filtering (e.g. Archive jobs only, Restore job only, etc.) 	 <p>The screenshot shows the 'Purge Manager' web interface. It features a 'Job List' table with columns for Name, Status, Last Accessed, Created By, Created, Deleted, and Create Date. The table contains several rows of job entries, each with a status icon (e.g., a red 'X' for failed or a green checkmark for completed) and a 'Create Date' column. The interface also includes a 'Connect View' dropdown and a 'Page 1 of 1' indicator.</p>
<ul style="list-style-type: none"> • Facilitates the creation of new purge and archive jobs • Allows administrators to specify details about a new job, including whether to archive the data prior to purging • For the data to be archived, the administrator can also specify options to be included in the archive. These options include: <ul style="list-style-type: none"> • Versions and Iterations - Include either the latest iterations of the latest version, or the latest iterations of all versions • CAD Dependents - Include either required dependencies only, or all dependencies • May preview of purge list generated by object selection criteria prior to starting an Archive and/or Purge job 	 <p>The screenshots show the configuration steps for creating a purge job. The first screenshot is the 'Purge Manager' main page. The second screenshot is the 'Purge Job' configuration dialog, which includes fields for 'Name', 'Status', 'Created By', 'Created', and 'Deleted'. The third screenshot is the 'Purge Job' configuration dialog, showing a list of objects to be purged. A legend at the bottom right indicates the steps: Step 1: Purge Name and Description, Step 2: Define options, Step 3: Assigning Objects to Purge and Archive Job, Step 4: Purging Data for Job, and Step 5: Ready to Run Job.</p>

[Back To Top](#)

Tips of the Week

Part Level Simplified Representations

[Click Here To View](#)

[Back To Top](#)

Tips of the Week

How to Configure a Windchill Archive Server

Overview

It will be necessary to perform some basic configuration steps before you can begin archiving content to the Windchill Archive Server. Typically, configuration will include the following operations:

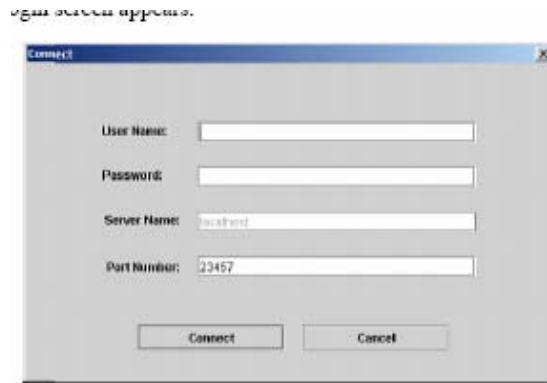
- The definition of one or more archive devices accessible to the Windchill Archive Server. This version of the Windchill Archive supports any device which provides a file system interface. This includes most NAS (Network Addressable Storage) devices.
- The creation of one or more archive volumes. An archive volume must be associated with an archive device. The archive volume is essentially a database for storing object references and metadata for content that has been archived to the underlying archive device.
- The creation of one or more search databases. A search database is used to maintain a text-search index of content that has been archived.
- The creation of one or more users and/or groups. You will need to create a search database for each Windchill system that will be archiving data to the Windchill Archive Server.
- The setting of the Windchill Archive Server logging level and communication port numbers. These are optional operations. These operations may all be performed via the Windchill Archive Management Console. These configurations operations are described in the sections that follow.

Launching the Archive Management Console

Windows

1. Log on to the Windchill Archive Server machine as the user that performed the installation.
2. In Windows, click the **Start** button.
3. Select **Programs**.
4. Select **Windchill Archive**.

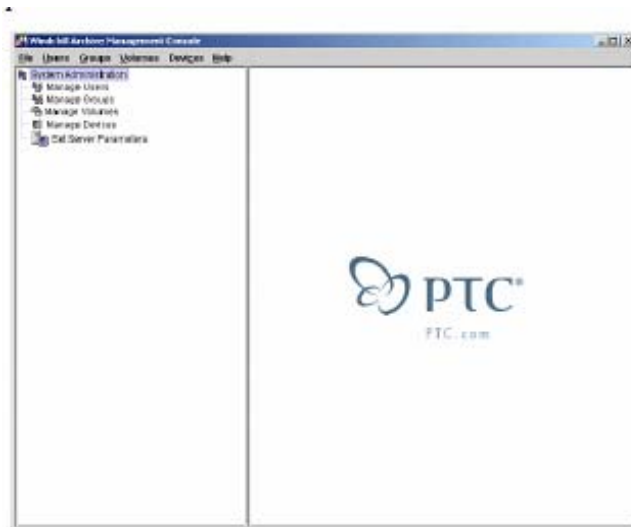
5. Click the Windchill Archive Management Console. The login screen appears.



Connecting to the Windchill Archive Server

To connect to the Windchill Archive Server:

1. At the login screen, enter the user name "system".
2. Enter the password you specified for the "system" account during the installation of the Windchill Archive Server.
3. If necessary, specify the port number for connecting to the Windchill Archive Server. This will only be necessary if you have previously configured the server to listen on the non-default port. Otherwise just accept the default port number.
4. Click **Connect**. If successful, the Windchill Archive Management Console appears.



Setting the Windchill Archive Server Parameters

The Server Parameters editor allows you to set parameters such as port numbers, logging level and administrative user ID and password. The following sections describe these settings in details.

To edit the Windchill Archive Server parameters:

1. Click **Set Server Parameters**. The server parameter editor appears in the right-hand pane of the Management Console.
2. Set the desired values as described in the table below.

Parameter Name	Description
RMI Port	The Windchill Archive Server acts as a Remote Method Invocation (RMI) server. By default the RMI server “listens” for remote method calls on port number 1099. If another application is already using port number 1099, you may need to change this setting. You may set the RMI port number to any unused network port.
Database Port	The Windchill Archive Server requires the use of a network port for establishing connections to its embedded database. By default, database connections are established on port number 23457. If another application is already using port number 23457, you may need to change this setting. You may set the database port number to any unused network port.
Logging Level	This setting controls the level of verbosity of the Windchill Archive Server log file. The valid setting, in order of most to least verbose, are: ALL, DEBUG, INFO, WARNING, SEVERE. The default setting is INFO. For troubleshooting, you may wish to increase the logging level to DEBUG or ALL.
User ID	This is the user ID that the Windchill

	Archive Server uses to establish a connection with its embedded database. By default, this is set to "system" and generally need not be changed.
Password	This is the password for the user ID specified above.

3. Click Save.
4. If you have changed the Database Port number you must perform the following additional steps:
 - On Windows systems:
 - i. Edit the "services" file located in %SystemRoot%\System32\drivers\etc and update the "pctdbs" entry with the new database port number.
 - ii. Stop and restart the "TRIP Daemon" and TRIPNet Daemon" services.
5. Restart the Windchill Archive Server

[Back To Top](#)

Announcements

Educational Resource Library

Learn things you always wanted to do - but didn't know you could.

This one stop educational resource library will help you learn more about PTC Solutions and provide you with technical materials developed by the product experts to help you become more productive.

Get tutorials, how-to videos and expert advice for:

- Pro/ENGINEER
 - Conceptual and Industrial Design
 - Detailed Design
 - Simulation/Analysis
 - Production
 - Design Collaboration
- Windchill PDMLink
- Windchill ProjectLink
- Pro/INTRALINK
- PTC Online Tools

Check out the [Educational Resource Library](#) today.

Live Instructor-Lead Virtual PTC Training Courses

Virtual Classrooms provide interactive learning with a trained PTC instructor in convenient and manageable sessions that last approximately 4 hours over a series of days. It's easy to join a class right from your desk using a phone or voice-over IP technology.

Sessions are performed just like a traditional ILT (including interactive exercises where you and the instructor can work on lab exercises together) and feature some of our most popular ILT courses. These sessions cover the exact same material as the traditional ILT in-center courses. Also look for some of our most frequently requested mini-topics delivered in the same format that are only an hour - two hours in duration.

If you have any questions about these sessions or would like to see getting other courses, not on this list, on the schedule please feel free to contact me for more details. They are a great way to bring training to you without you having to worry about location or being out from work for long stretches.

You can register for these sessions just as you would for any normal ILT class either by:

1. calling order admin at <http://www.ptc.com/services/edserv/training/registra.htm> or

2. you can go to PTC University directly at <http://www.ptc.com/learning> and submit a registration request directly. All you have to do is search the catalog by typing in "virtual" in the search field and you will see a listing.

PTC Tips & Techniques Newsletter Archives

Miss an issue! Can't find that awesome technique you read about? Fear not, you can click on the link below and go through our Customer PTC E-Newsletter archives.

[Click Here To Access](#)

It's better than finding the Covenant of the Ark!

PTC Tips & Techniques Webcasts: Work Smarter. Not Harder.

Click below to see regularly scheduled Tips & Techniques technical Webcasts that are designed to provide you with the most popular time-saving tricks that Pro/ENGINEER users of all skill levels will find useful. Get more out of your maintenance dollars!

[Tips & Techniques: Work Smarter Not Harder!](#)

Thinking About Pro/ENGINEER Wildfire? Check this out.



<http://www.ptc.com/go/engineering/index.htm>

E-PROFILES IS HERE!!

We have been eagerly anticipating the debut of the new electronic version of Profiles Magazine and now it is here! This new web site will supplement the print edition of the magazine and will provide new useful features not feasible with paper media. e-Profiles will provide you with 24x7, worldwide access to key information previously available exclusively in the print version. "Tips & Tricks," a popular feature pioneered by Pro/USER, has also moved to the web and will be expanded as the site matures.

Please take a few minutes to check out this new web site. We don't think you will be disappointed.

<http://profilesmagazine.com/>

[Back To Top](#)

Upcoming Events & Training Class Schedules

Upcoming, 2005 Your local Pro/Engineer User Groups
<http://www.ptcuser.org/rugs/>

June 4 - 7, 2006 Dallas, Texas
PTC/USER International Conference
<http://www.ptcuser.org/>

Events

Our seminars and conferences seek to provide you with relevant information regarding product development trends in your industry as well as innovative software learning experiences. Think of them as a constructive day off where you can share experiences and swap ideas with your peers.

If you can't manage to get away, we'll bring it to you. Check back often for regularly scheduled live webcast events.

[You're Invited to Attend...](#)

Please visit the [PTC Education Services](#) website for the latest training information including course descriptions, schedules, locations, and pricing.

- Attend a course at any PTC Center and receive a **free** copy of Pro/ENGINEER Wildfire Student Edition!

<http://www.ptc.com/services/edserv/index.htm>

Live Instructor-Lead Virtual PTC Training Courses

Virtual Classrooms provide interactive learning with a trained PTC instructor in convenient and manageable sessions that last approximately 4 hours over a series of days. It's easy to join a class right from your desk using a phone or voice-over IP technology.

Sessions are performed just like a traditional ILT (including interactive exercises where you and the instructor can work on lab exercises together) and feature some of our most popular ILT courses. These sessions cover the exact same material as the traditional ILT in-center courses. Also look for some of our most frequently requested mini-topics delivered in the same format that are only an hour - two hours in duration.

If you have any questions about these sessions or would like to see getting other courses, not on this list, on the schedule please feel free to contact me for more details. They are a great way to bring training to you without you having to worry about location or being out from work for long stretches.

You can register for these sessions just as you would for any normal ILT class either by:

1. calling order admin at <http://www.ptc.com/services/edserv/training/registra.htm> or
2. you can go to PTC University directly at <http://www.ptc.com/learning> and submit a registration request directly. All you have to do is search the catalog by typing in “virtual” in the search field and you will see a listing.

PTC

Note: This PTC E-Newsletter will continue to be used for the following:

- 1) Inform you on events related to PTC products (user groups, conferences, training schedules, etc.)
- 2) Educate you on solutions that are available at PTC
- 3) Tips & Techniques using PTC Products

Note: These messages are compiled in the local PTC office and will be distributed via e-mail.

[Back To Top](#)