

PTC Product Focus: A) [SmartLibrary for Pro/ENGINEER](#)

B) [Introducing Windchill RequirementsLink](#)

Tips of the Month: A) [Using 2D Axis Symmetry, Plane Strain, Plain Stress and Cyclic Symmetry Models in Pro/ENGINEER Mechanica](#)

B) [Using Baselines to Lockdown RMLink Requirements at Key Milestones](#)

Announcements: [Most Recent Announcements](#)

Upcoming Events & Training Schedule: [Events & Training Schedule](#)

PTC Product Focus

SmartLibrary for Pro/ENGINEER

[Click Here To View](#)

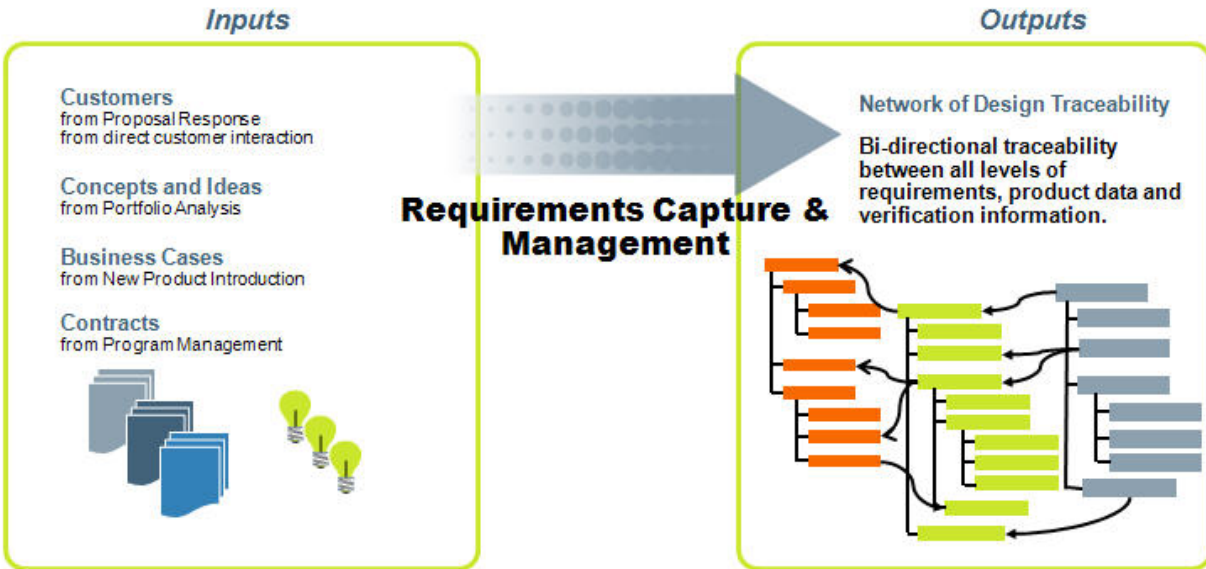
[Back To Top](#)

PTC Product Focus

Introducing Windchill RequirementsLink

Requirements Link Overview

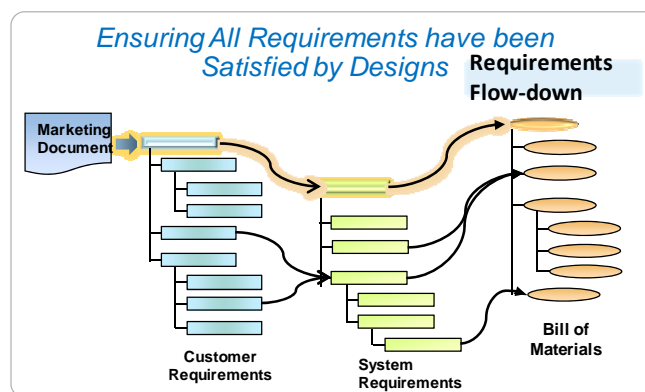
Failure to meet requirements is one of the top reasons new product launches fail. Given increased product and design team complexity, the linking and management of requirements – from customer needs to detailed design – must be viewed with the same criticality as the management of product data. The process of identifying customer needs and turning them into a successful product or system is difficult to do when requirements are not tightly coupled with other critical product data artifacts. By definition, the process of requirements capture and management involves capturing customer needs and developing customer requirements, deriving technical requirements that satisfy those needs and requirements, establishing traceability between all levels of requirements and product data, assessing the impact of change on both requirements and product design data, and verifying that requirements are met and customer needs satisfied.



RequirementsLink Critical Capabilities

Windchill RequirementsLink supports the complete requirements management process with an integral solution that:

- Establishes bi-directional traceability between product requirements and their resulting product configurations allowing Windchill users to create and manage requirements in the same environment that's used to create and manage product data.
- Provides the capability to import specifications and requirements directly from Microsoft Word and the ability to import/update/export requirements to Microsoft Excel.
- Defines and links verification requirements to functional and performance requirements at every level of a design to ensure that customer and market requirements have been satisfied and verified by designs.



Windchill

Event Manager | Clipboard | Help | E-mail Page | Hot Links | Recently Accessed | Search:

Home Program Product Project Change Library Organization

Products Details Folders Network Packages Team Assignments Change Monitor Discussions Templates Reports Utilities

Product: a-Downhill-Racer-001 | Folder: 2. Product Requirements

Actions Requirement - REQ-0000002926, A.3 State: In

Name: Sys-001
Status: Checked in
Modified By: Mark Field on 2009-02-17 17:32 CST
Description: The drivetrain shall support a standard off-the-shelf 9 speed drivetrain so spare parts are easily accessible.
[More Attributes](#)

General Related Objects History Collaboration

Select an object to see its traceability links

Upstream Traceability Tree (2 total objects)

Number	Name	Association Type
REQ-0000002915	2.3 Competition	Derivation
REQ-0000002916	3.1 Improve Mud & W...	Derivation

Downstream Traceability Tree (3 total objects)

Association Type	Name	Number
Allocation	Wheel Set	0000000102
Allocation	Suspension	0000000104
Allocation	Drivetrain	0000000103

Powered by Windchill | About Windchill | Copyright © 2008 Parametric Technology Corporation. All Rights Reserved.

Benefits of an Integrated Windchill Requirements Process

An integral, optimized requirements capture and management process provides visibility into customer needs throughout the entire product development lifecycle. Typical benefits of improving the requirements capture and management process include:

Increased market Success

- Focus on customer needs by making requirements accessible to the entire product development team.
- Properly validate customer needs and requirements by collaborating directly with requirement stakeholders.

Improved Business Decisions

- Evaluate the impact of design changes by linking customer needs to product data.
- Understand the true cost of requirement changes by tracing all impacts from requirements to product data.

Increased Quality

- Ensure requirements are verified properly by measuring links between requirements and verification requirements.
- Demonstrate compliance with regulatory and contractual requirements by establishing traceability to product designs.

Windchill® Event Manager | Clipboard | Help | E-mail Page | Hot Links | Recently Accessed | Search: _____

Home Prgram Product Project Change Library

Products Details Folders Network Packages Team Assignments Change Monitor Discussions Te

Product: EPS12vPower Supply | Folder: Requirements

Actions (Go to Latest) Specification - SSI EPS12V State: In Work ?

Specification (SPEC-0000000781), A.1

Structure General Related Objects History Collaboration

Specification Structure View: Baseline 0: Requirements Import

View As: Tree

Specification Structure (11 total objects) View: Member Status

<input type="checkbox"/>	Name	Number	Actions	Version
<input type="checkbox"/>	SSI_EPS12V Specification	SPEC-0000000781	Actions	A.1
<input type="checkbox"/>	Mechanical Overview	SPEC-0000000782	Actions	A.1
<input checked="" type="checkbox"/>	Temperature Requirements	REQ-0000001225	Actions	A.1
<input checked="" type="checkbox"/>	Acoustic Requirements	REQ-0000001223	Actions	A.1
<input checked="" type="checkbox"/>	Airflow Requirements	REQ-0000001224	Actions	A.1
<input type="checkbox"/>	AC Input Requirements	SPEC-0000000783	Actions	A.1
<input type="checkbox"/>	DC Output Specification	SPEC-0000000784	Actions	A.1
<input type="checkbox"/>	Protection Circuits	SPEC-0000000785	Actions	A.1
<input type="checkbox"/>	Control and Indicator Functions	SPEC-0000000786	Actions	A.1
<input checked="" type="checkbox"/>	MTBF	REQ-0000001221	Actions	A.1
<input checked="" type="checkbox"/>	Agency Requirements	REQ-0000001222	Actions	A.1

Powered by Windchill® About Windchill Copyright © 2008 Parametric Technology Corporation. All Rights Reserved.

[Back To Top](#)

Tips of the Month

Using 2D Axis Symmetry, Plane Strain, Plain Stress and Cyclic Symmetry Models in Pro/ENGINEER Mechanical

[Click Here To View](#)

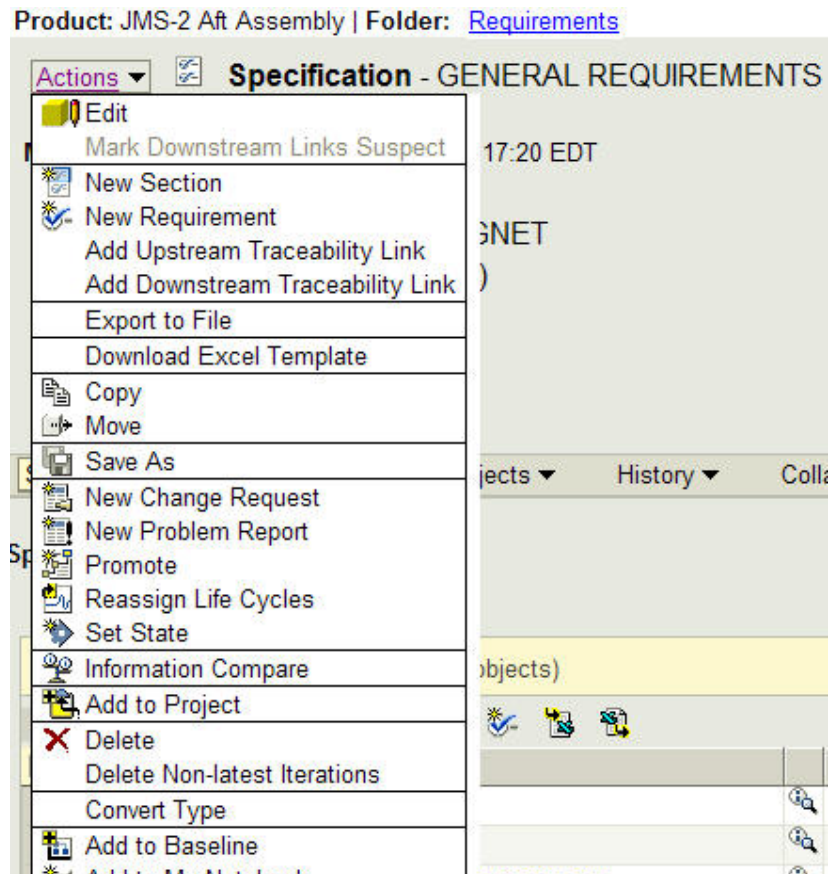
[Back To Top](#)

Tips of the Month

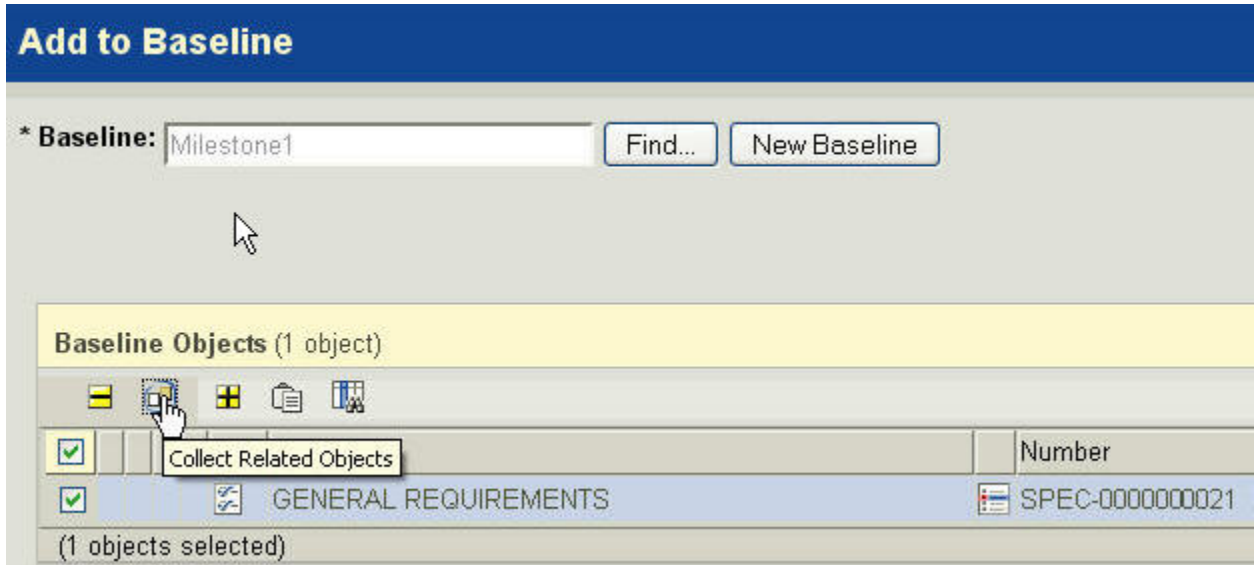
Using Baselines to Lockdown RMLink Requirements at Key Milestones

Utilizing Windchill's Baseline capabilities is a great way to manage RMLink Requirements over a product's complete development lifecycle. Baselines can be used to lock a requirements set for formal Gate Reviews or at any other key program milestone. This will ensure that you have complete history, traceability and status accounting for your requirements.

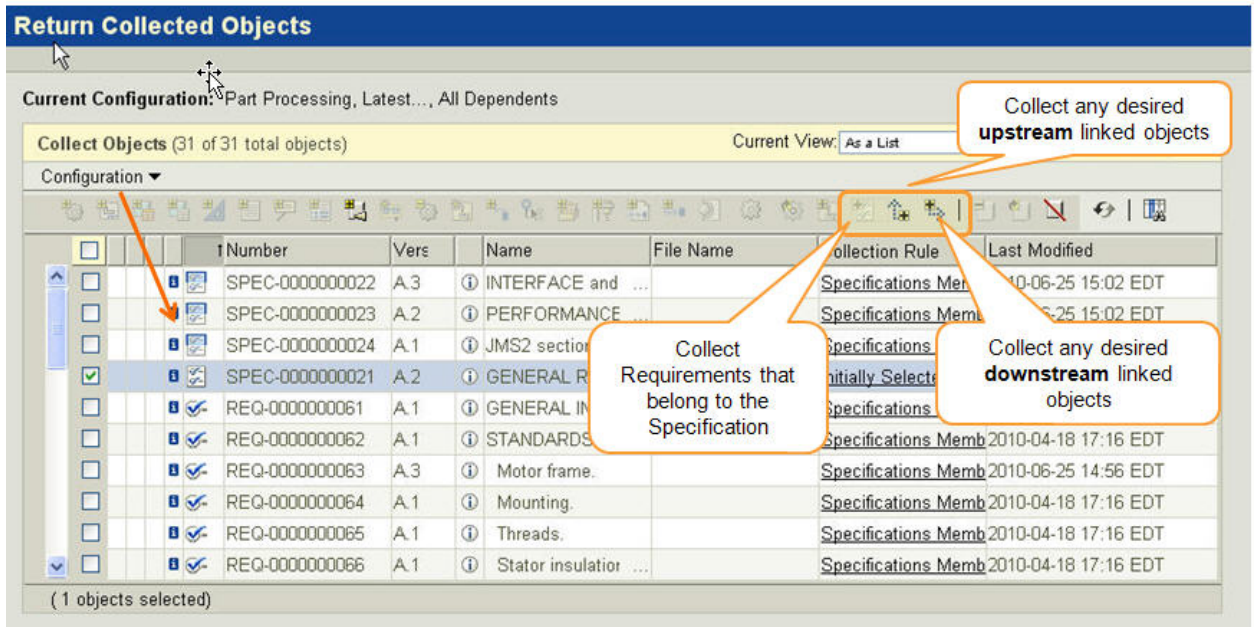
1. From a Specification's details page, select Actions → Add to Baseline.



2. Create and name a new Baseline.
3. Select the “Collect Related Objects” button.



4. Select “Collect specifications members” to retrieve a Specification’s requirements and any desired upstream or downstream related objects.



5. Now you can toggle between your Requirement Baselines to see how the requirements evolved over time. From your Specification’s Structure page select the “Specification Structure View” dropdown to view a specific Baseline. Use two windows to visually compare Baselines or export both to Excel for more advanced operations.

Windchill Event Manager | Clipboard | Help | E-mail Page | Hot Links
Recently Accessed | Search:

Home Program **Product** Project Change Library Organization
Products Details Folders Network Packages Team Assignments Change Monitor Discussions Templates Reports Utilities

Product: a-Downhill-Racer-001

Actions Managed Baseline - 0000000441 (Gate-001-Requirements) State: In

Primary Object: DHR-Marketing-Spec
State: In Work - Released - Canceled
Last Modified: 2009-02-17 16:42 CST
Location: / a-Downhill-Racer-001
Protected: Yes
Locked By: Mark Field
Description:

General Related

Baseline Objects (17)

Name	Number	Version
1.0 Options	SPEC-0000001549	A.1
1.1 Frame Size	REQ-0000002909	A.1
1.2 Rear Shock	REQ-0000002910	A.1
1.3 Front Suspension	REQ-0000002911	A.1
1.4 Color & Finish	REQ-0000002912	A.1
2.0 User Expectations	SPEC-0000001550	A.1
2.1 Terrain	REQ-0000002913	A.1
2.2 Courses	REQ-0000002914	A.1
2.3 Competition	REQ-0000002915	A.1
3.0 Marketing Goals	SPEC-0000001551	A.1
3.1 Improve Mud & W...	REQ-0000002916	A.1
3.2 Improve Downhill C...	REQ-0000002917	A.1
3.3 Improve Ride Expt...	REQ-0000002918	A.1
4.0 Miscellaneous Ser...	SPEC-0000001552	A.1
4.1.1 MiscReqOne	REQ-0000002919	A.1
4.1 Subsection One	SPEC-0000001553	A.1
DHR-Marketing-Spec	SPEC-0000001548	A.1

(0 objects selected) Page 1 of 1 Page List

Windchill Event

Home Program **Product** Project Change Library Organization
Products Details Folders Network Packages Team Assignments Change Monitor Discussions

Product: a-Downhill-Racer-001 | Folder: 1. Marketing Requirements

Actions Specification - SPEC-0000001548, A.1
Name: DHR-Marketing-Spec
Status: Checked in
Modified By: Mark Field on 2009-02-17 16:29 CST
Description: More Attributes

Structure General Related Objects History Collaboration

Specification Structure View: Current Copy
Current Copy
Gate-001-Requirements View: Structure

Name	Number	Actions	Version
DHR-Marketing-Spec	SPEC-0000001548	Actions	A.1
1.0 Options	SPEC-0000001549	Actions	A.1
2.0 User Expectations	SPEC-0000001550	Actions	A.1
3.0 Marketing Goals	SPEC-0000001551	Actions	A.1
4.0 Miscellaneous Section	SPEC-0000001552	Actions	A.1

[Back To Top](#)

Announcements

The PTC/USER Portal is getting an updated, fresh user interface.



The functionality is remaining the same but the site is being redesigned to allow for easier navigation by users.

You will also begin to see blog articles being posted by the PTC/USER Board of Directors highlighting different aspects of your community and other relevant info.

The four major areas in which our site design has been updated are:

1. Redesigned Header Area
2. Simplified Navigation
3. New Site Wide Right Side Bar
4. Other Design Elements

For more details on these changes you can read about them in the [What's New](#) guide.

Enjoy the redesigned site and we look forward to your feedback.

Evan Caille

PTC/USER Board of Directors

PTC Tips & Techniques Newsletter Archives

Did you miss an issue? Can't find that awesome technique you read about? Fear not, you can click on the link below and go through our Customer PTC E-Newsletter archives.

[Customer Care Zone](#)

PTC Tips & Techniques Webcasts: Work Smarter. Not Harder.

Click below to see regularly scheduled Tips & Techniques technical Webcasts that are designed to provide you with the most popular time-saving tricks that Pro/ENGINEER users of all skill levels will find useful. Get more out of your maintenance dollars!

[Tips & Techniques: Work Smarter Not Harder!](#)

Special Hardware offers for PTC Customers

- <http://www.hp.com/go/ptc>
- <http://www.hp.com/go/ptcworkstation>

PTC Sponsored Events

- <http://www.ptc.com/company/news/events/index.htm>

Explore what is new with the Pro/ENGINEER Wildfire family!

<http://www.ptc.com/go/showcase>

Connect with PTC using the latest Social Networking resources:

facebook



LinkedIn

YouTube

Also visit <http://social-product-development.blogspot.com/>

[Back To Top](#)

Upcoming Events & Training Class Schedules

Upcoming, 2010 Your local Pro/Engineer User Groups
<http://www.ptcuser.org/rugs/>

June 12 – 15, 2011 Las Vegas, NV USA
PTC/USER World Event
<http://www.ptcuser.org/>

Events

Our seminars and conferences seek to provide you with relevant information regarding product development trends in your industry as well as innovative software learning experiences. Think of them as a constructive day off where you can share experiences and swap ideas with your peers.

If you can't manage to get away, we'll bring it to you. Check back often for regularly scheduled live webcast events.

[You're Invited to Attend...](#)

Please visit the [PTC Education Services](#) website for the latest training information including course descriptions, schedules, locations, and pricing.

- Attend a course at any PTC Center and receive a **free** copy of Pro/ENGINEER Wildfire Student Edition!

<http://www.ptc.com/services/edserv/index.htm>

Live Instructor-Lead Virtual PTC Training Courses

Virtual Classrooms provide interactive learning with a trained PTC instructor in convenient and manageable sessions that last approximately 4 hours over a series of days. It's easy to join a class right from your desk using a phone or voice-over IP technology.

Sessions are performed just like a traditional ILT (including interactive exercises where you and the instructor can work on lab exercises together) and feature some of our most popular ILT courses. These sessions cover the exact same material as the traditional ILT in-center courses. Also look for some of our most frequently requested mini-topics delivered in the same format that are only an hour - two hours in duration.

If you have any questions about these sessions or would like to see getting other courses, not on this list, on the schedule please feel free to contact me for more details. They are a great way to bring training to you without you having to worry about location or being out from work for long stretches.

You can register for these sessions just as you would for any normal ILT class either by:

1. calling order admin at <http://www.ptc.com/services/edserv/training/registra.htm> or
2. you can go to PTC University directly at <http://www.ptc.com/learning> and submit a registration request directly. All you have to do is search the catalog by typing in “virtual” in the search field and you will see a listing.

PTC

Note: This PTC E-Newsletter will continue to be used for the following:

- 1) Inform you on events related to PTC products (user groups, conferences, training schedules, etc.)
- 2) Educate you on solutions that are available at PTC
- 3) Tips & Techniques using PTC Products

Note: These messages are compiled in the local PTC office and will be distributed via e-mail.

[Back To Top](#)