

PTC Product Focus: A) [Pro/TOOLKIT: the Primary Customization and Automation Tool for Pro/ENGINEER](#)

B) [Relex - Fully Integrated Reliability Management Solutions](#)

Tips of the Month: A) [Pro/ENGINEER Visibility Study Analysis Feature](#)

B) [Arbortext Custom Tables – Flexible Information Display](#)

Announcements: [Most Recent Announcements](#)

Upcoming Events & Training Schedule: [Events & Training Schedule](#)

PTC Product Focus

Pro/TOOLKIT: the Primary Customization and Automation Tool for Pro/ENGINEER

[Click Here To View](#)

[Back To Top](#)

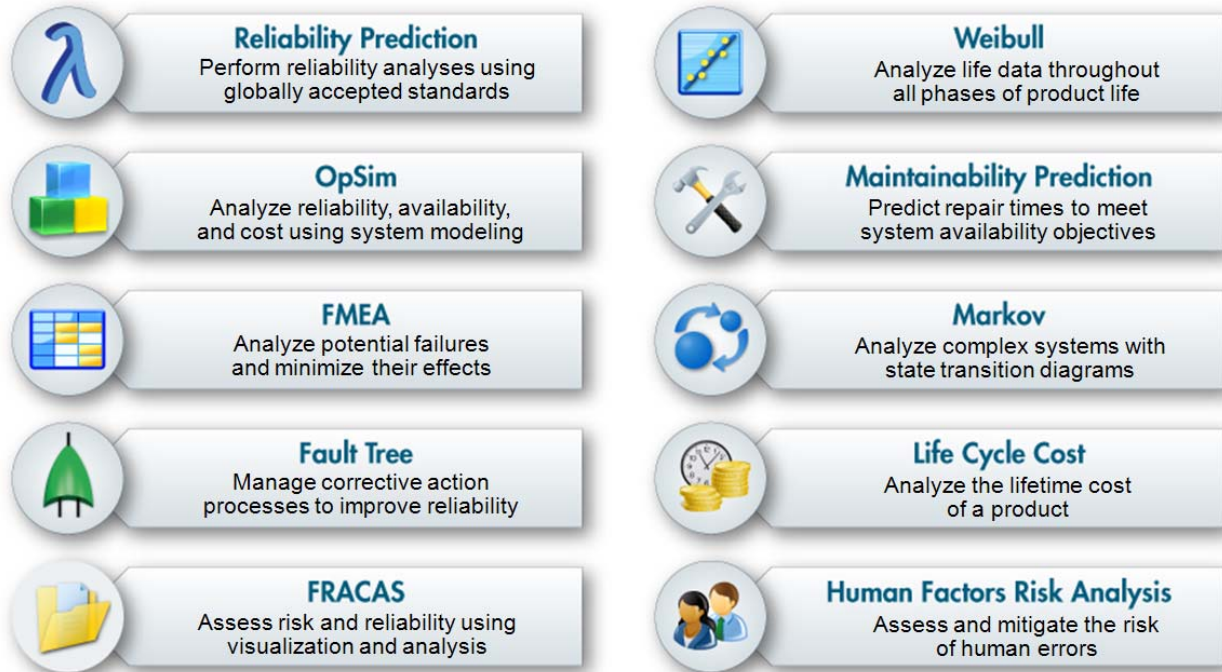
PTC Product Focus

Relex - Fully Integrated Reliability Management Solutions

Product reliability and safety are not only vital to the success of every company, but are now the benchmarks for consumer confidence. What's more, in a wide range of industries, reliability and safety are now mandated, as manufacturers are being held to strict standards for product performance and risk mitigation both by global government regulations, as well as customer contract requirements.

With Relex reliability solutions from PTC, you can define reliability targets early in your design process, then measure product performance against these targets throughout development and testing, and later use field performance data to improve next-generation products. With Relex, you have the tools to produce safer, more reliable products, without sacrificing innovation, because you're working with a fully integrated, easy-to-use reliability management solution that streamlines reliability analysis across the enterprise.

Product Overview



Features & Benefits

- Gain early insight into safety and performance metrics for reliability and quality planning
- Achieve safety and performance targets throughout the life of the product
- Analyze risks and implement risk control measures to ensure maximum product safety
- Calculate cost metrics, including Cost of Poor Quality, to maximize revenue and profits
- Leverage closed loop field performance feedback to improve next-generation products

For further information and access to the brochure, additional data sheets and a free 30 Day Tryout version of Relex, please click [here](#) to access the Relex product page.

[Back To Top](#)

Tips of the Month

Pro/ENGINEER Visibility Study Analysis Feature

[Click Here To View](#)

[Back To Top](#)

Tips of the Month

Arbortext Custom Tables – Flexible Information Display

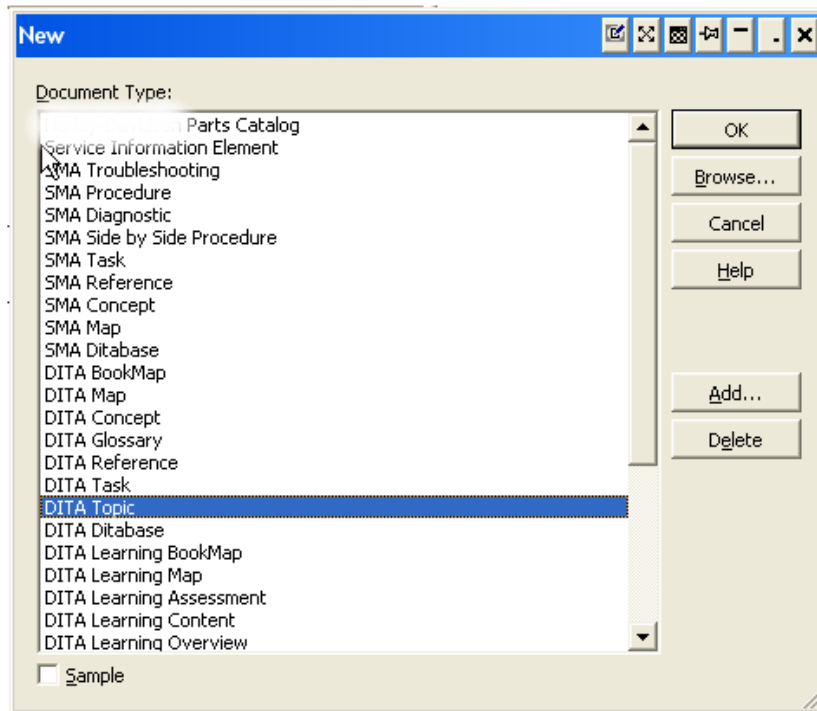
When you style elements to be displayed as a custom table in Arbortext Styler, you enable the elements that define that table to be edited using Arbortext Editor's Table Editor, as well as to be formatted as a table in all outputs. Any 3 level hierarchy of tags can be presented as a table in the editor, as well as all Styler supported output media. In addition, the XML tags can be edited with the Arbortext table editor, including all the formatting and layout controls. It is the Custom Table Styler Element that allows this flexible approach to entering, displaying and publishing non-tabular XML as a table.

The following Tip will show how simple it is to apply the Custom Table Styler to any 3 level xml Structure.

The mapping between tags and table elements is straightforward. The top level tag creates the table; a row is created for each middle level tags, and a cell is created in the row for each third level tag.

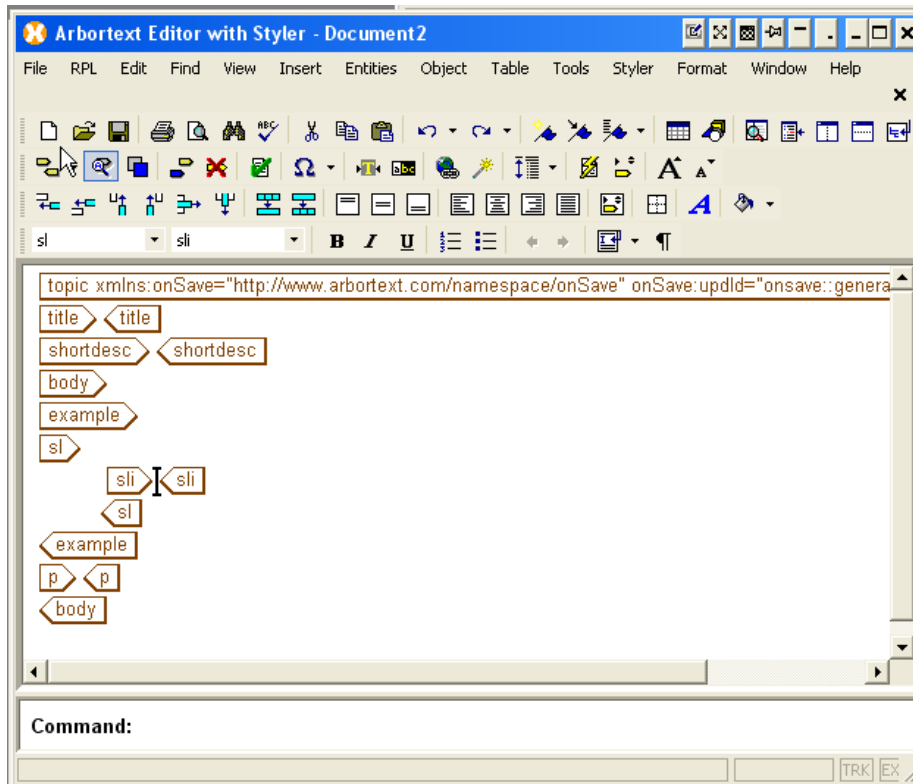
This example is detailed using the standard Dita doctype as a basis.

1. In Arbortext Editor, open a new Dita topic from the “New” dialogue.



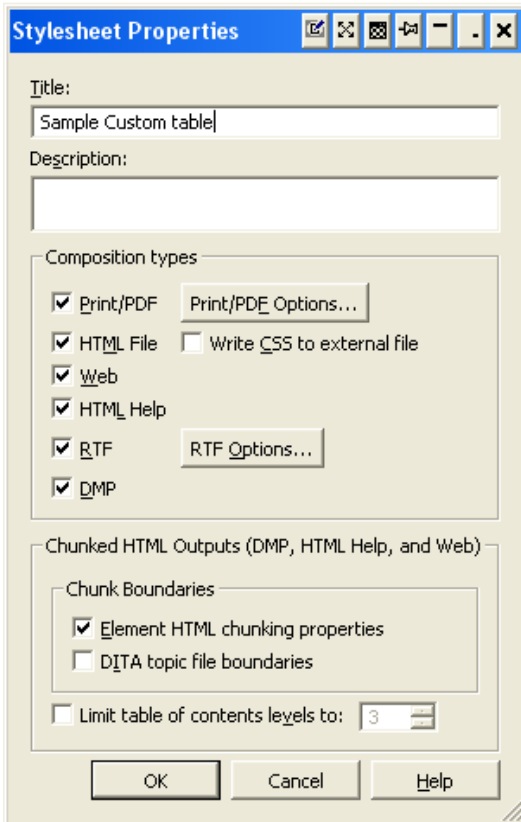
Save the new document to a file.

2. Place the cursor immediately after the <body> tag and insert the following tag structure:

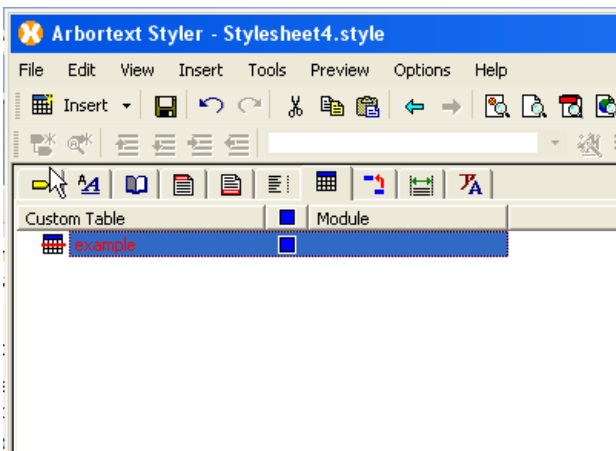


Type some content in the <sl> element. Notice that the tags is simply shown as tags and text.

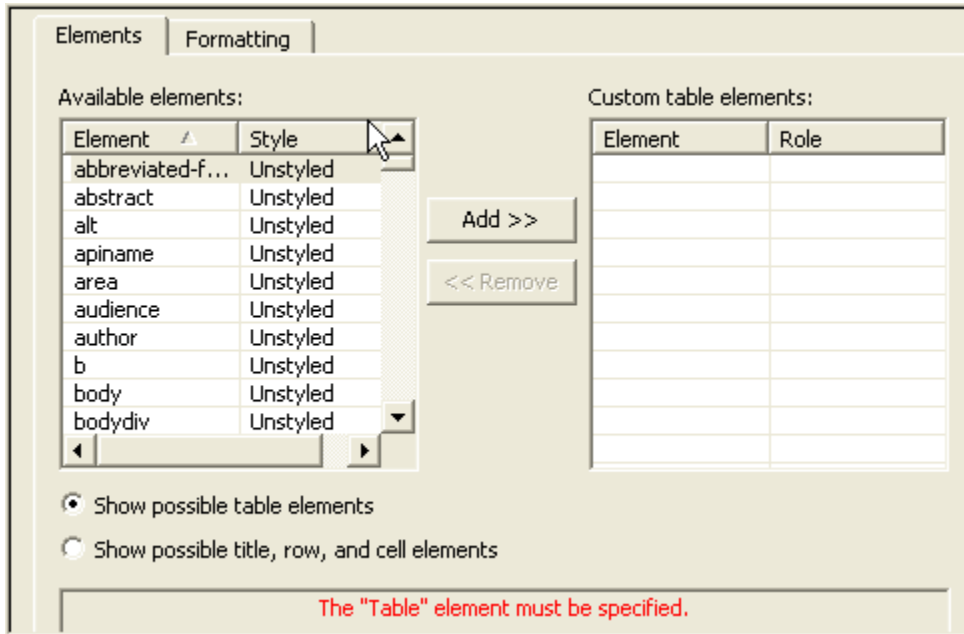
3. Choose Styler ► New Stylesheet to create a new stylesheet. Accept the default properties in the Stylesheet Properties dialog box that opens, and click OK to create the new stylesheet.



4. Choose the Insert ► Custom Table menu option. The Custom Tables list opens, if it is not already active, with a new custom table object CustomTable highlighted in the list. The object is crossed through in red since it currently contains errors - the required table and row elements have not yet defined. Rename the new object to example to match the as required.

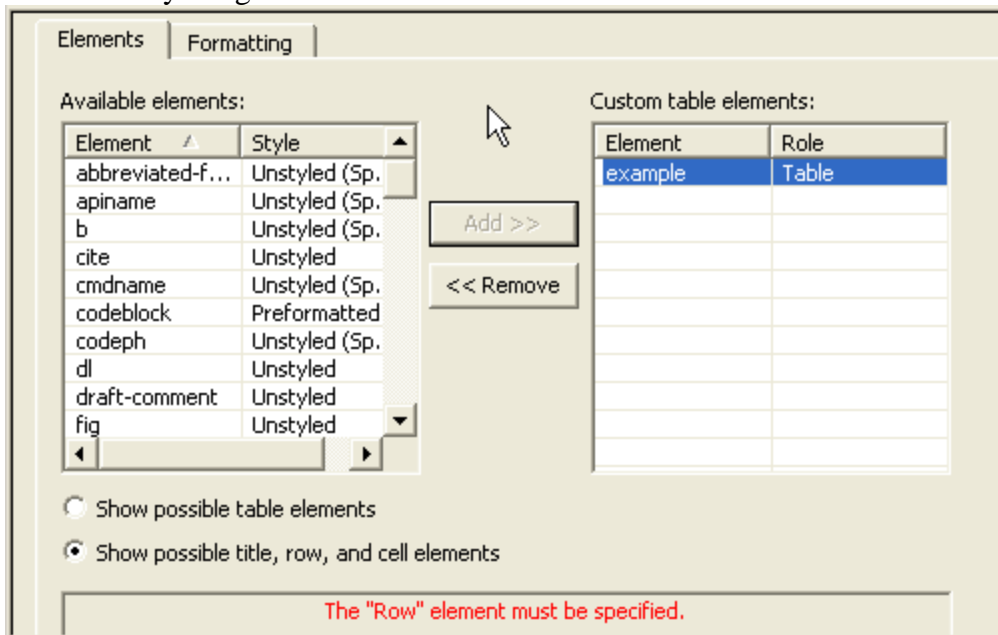


5. Refer to the Elements tab in the bottom half of the Arbortext Styler window. The Show possible table elements option is checked. The window advises you that you have not yet specified the element that forms the basis of the table. The elements that are permitted to perform the role of table are listed in the Available Elements list - you can see that the list contains every element that currently has the style Unstyled.



Select the element that should form the basis of the table from the Available Elements list, in this case the <example> element.

Click Add>> to add the element to the Custom table elements list. Arbortext Styler automatically assigns the role of Table to this element.



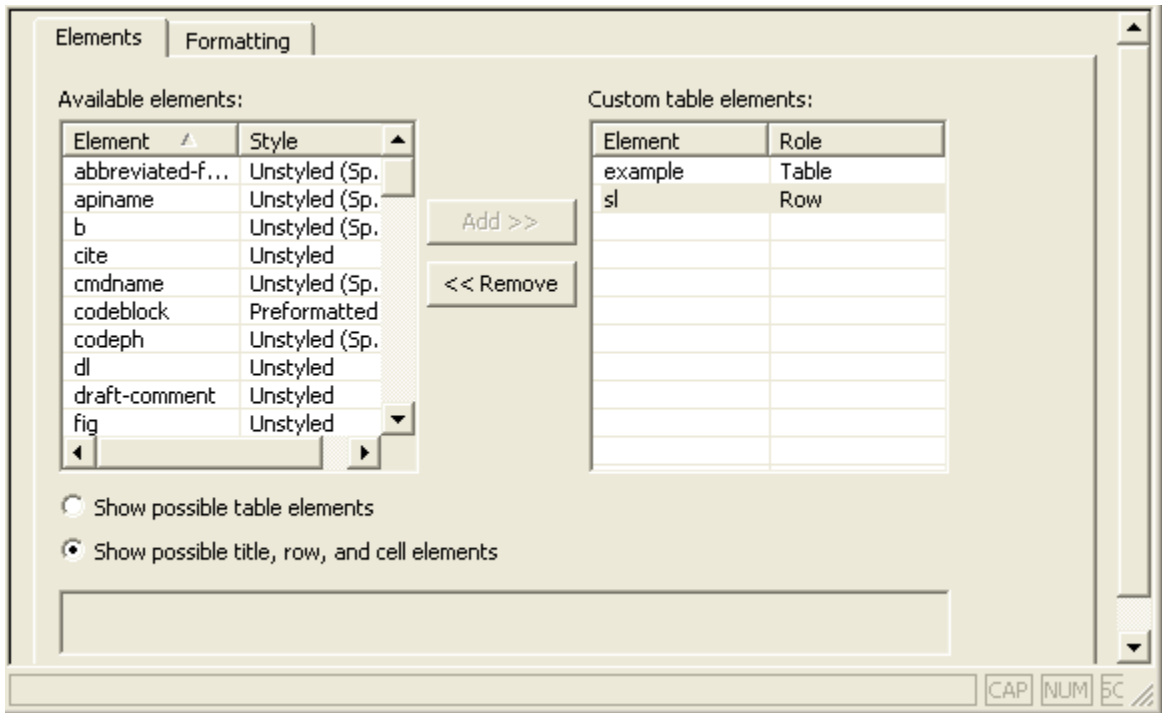
Note that the advice window at the bottom of the window now tells you that you need to

specify the required Row element for this custom table.

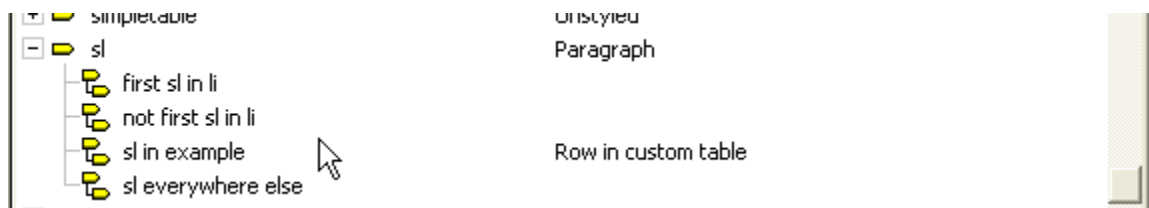
6. Navigate to the Elements list in the Arbortext Styler UI and locate the <example> element: you will see that the element has been assigned the style Custom Table.

Element	Style
+ dlentry	Paragraph
+ dlhead	Unstyled
+ draft-comment	Unstyled
+ dt	Unstyled
+ dthd	Unstyled
+ entry	Table
+ example	Custom Table
+ featnum	Unstyled
+ fig	Unstyled

7. Navigate back to the Custom Tables list and refer to the Available Elements list for your custom table - it now contains a list of those elements in the stylesheet that are permitted as children of the <sl> element. Choose author and click Add>> to add it to the Custom table elements list. In the Custom table elements list, click on the Role dropdown list and select Row.



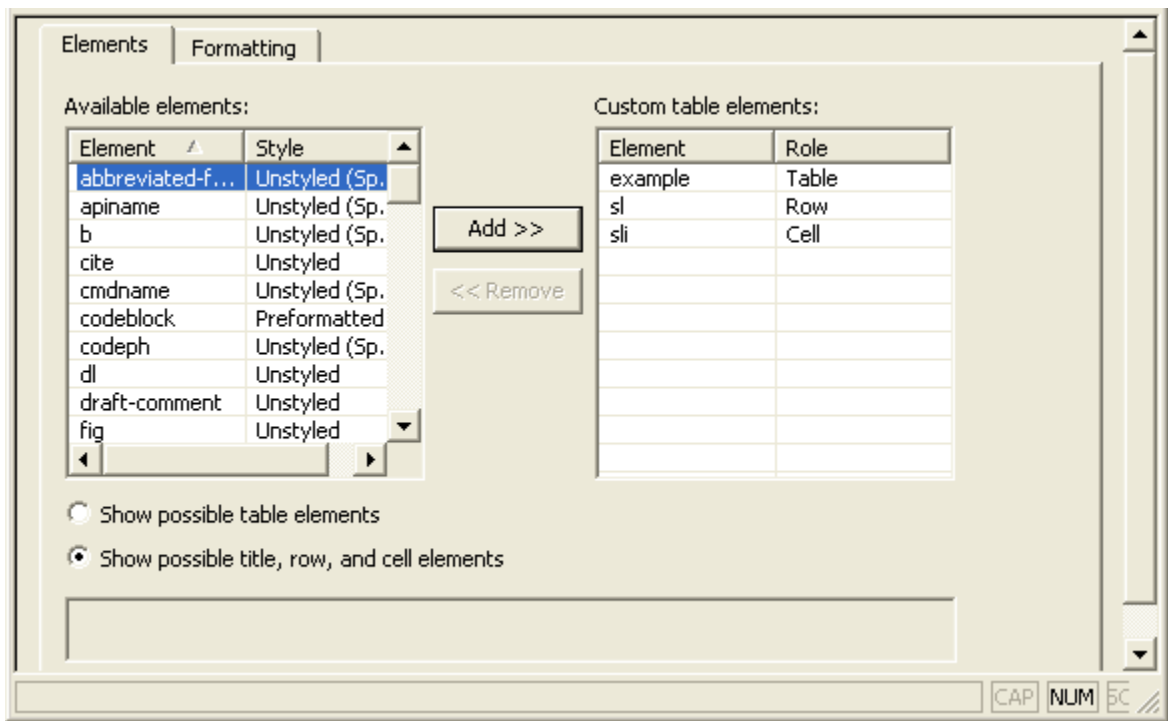
- Navigate to the Elements list in the Arbortext Styler UI and locate the author element: you will see that a new context <sl> in <example> has been created.



- Back in the Custom Tables list, refer to the Available Elements list for your custom table object - it now contains a list of those elements in the stylesheet that are permitted as children of the author element. Choose <sli> and click Add>> to add it to the Custom table elements list. In the Custom table elements list, click on the Role dropdown list and select Cell.

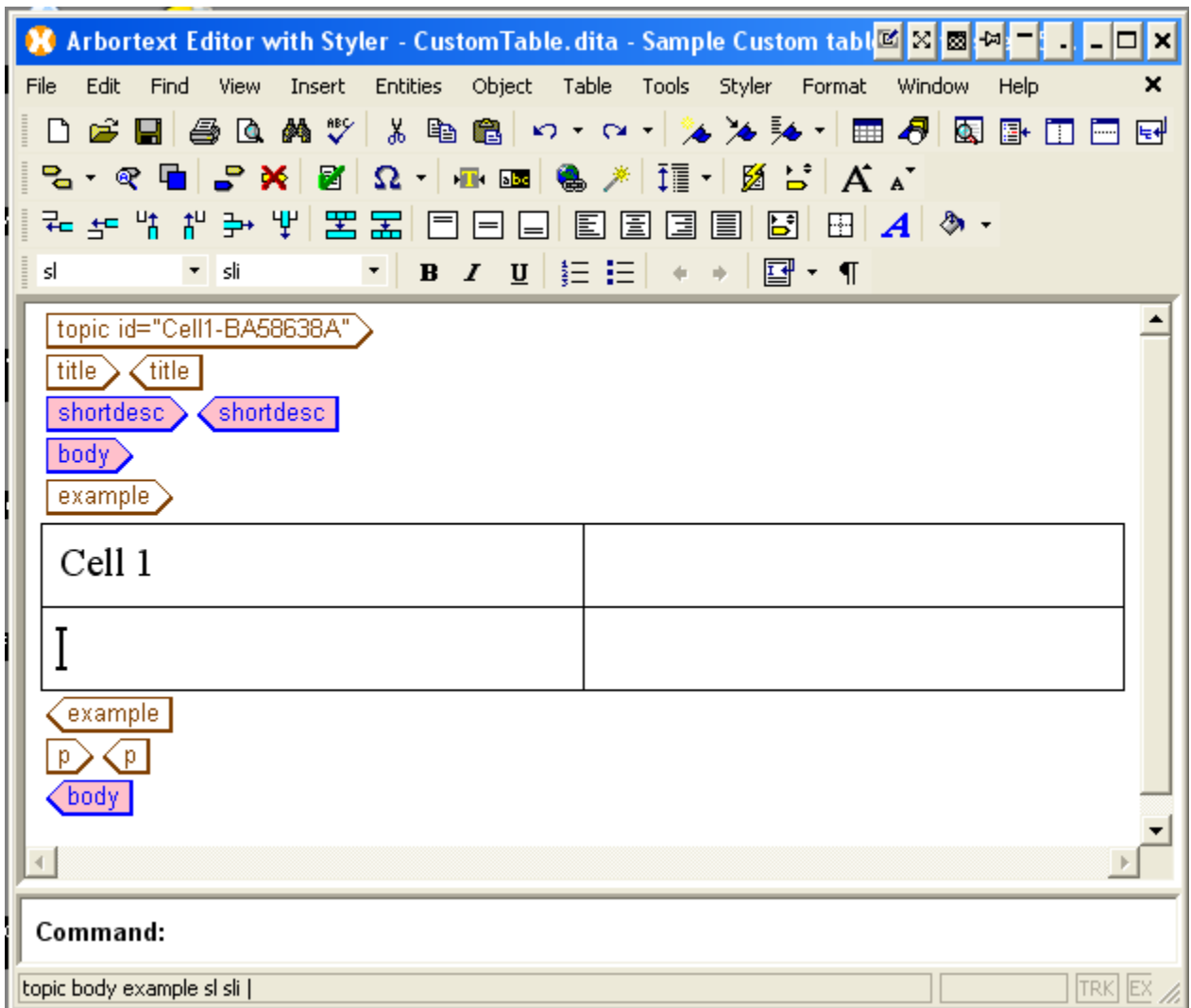
A new context firstname anywhere in authorgroup has been created in the Elements list, and that the context has been assigned the style Cell in custom table.

The definition of roles within your table is now complete. Note that the window at the bottom of the Elements tab is blank, indicating that there are no further steps to be completed to create a valid table:

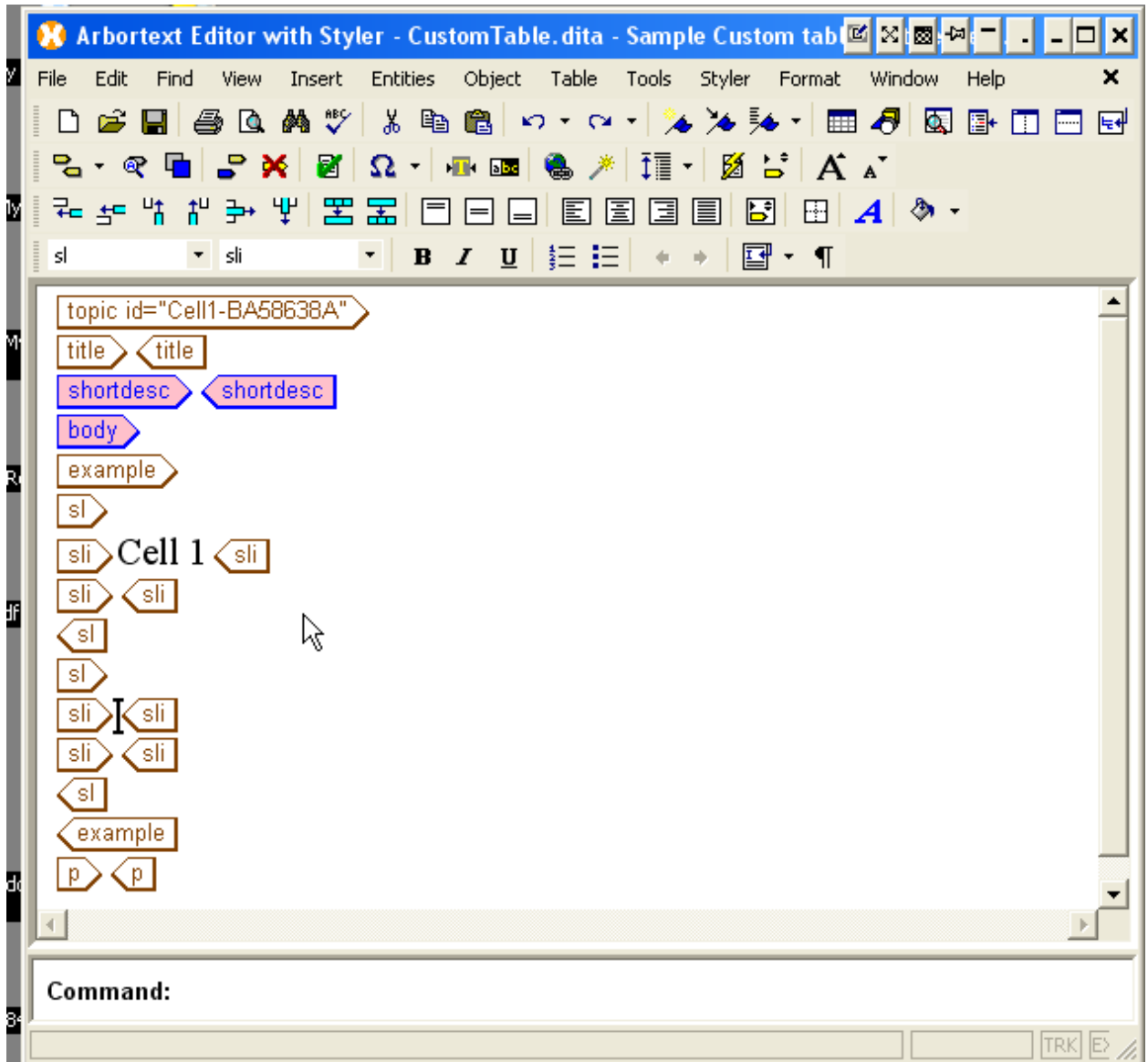


- Note that, if required, you can also use the Formatting tab to control the column widths of the custom table and how the table rules are displayed. You can configure the default column widths and table rules in the stylesheet and also designate attributes on the element to which you assigned the Table role to control the column widths or table rules. If you designate attributes to control the column widths or table rules, you can use those attributes as needed to override the default configuration for column widths and table rules.

11. Choose Preview ► Arbortext Editor. You will see that the original <example> is now displayed as a table.
12. You can now edit the table in Arbortext Editor. Inserting a new row and column will automatically insert a new <sl> and <sli>.



You can see how the <example> element forms the basis of the table by choosing View ► Tables ► Table Markup.



13. If the XML structure allows, a header row and header cells can be configured as the first row of the table. The header row will be repeated across pages if the tables spans multiple pages.

14. The CELL table function can be filled by more than one tag.

Note : An element's role in a custom table in specific contexts supersedes any semantics normally associated with the element's assigned style. For example, assume that you apply the Link style to an element and also assign it a role in a custom table other than Table. When that element is in the context of the custom table, the element does not act as a link.

[Back To Top](#)

Announcements

The PTC/USER Portal is getting an updated, fresh user interface.



The functionality is remaining the same but the site is being redesigned to allow for easier navigation by users.

You will also begin to see blog articles being posted by the PTC/USER Board of Directors highlighting different aspects of your community and other relevant info.

The four major areas in which our site design has been updated are:

1. Redesigned Header Area
2. Simplified Navigation
3. New Site Wide Right Side Bar
4. Other Design Elements

For more details on these changes you can read about them in the [What's New](#) guide.

Enjoy the redesigned site and we look forward to your feedback.

Evan Caille

PTC/USER Board of Directors

PTC Tips & Techniques Newsletter Archives

Did you miss an issue? Can't find that awesome technique you read about? Fear not, you can click on the link below and go through our Customer PTC E-Newsletter archives.

[Customer Care Zone](#)

PTC Tips & Techniques Webcasts: Work Smarter. Not Harder.

Click below to see regularly scheduled Tips & Techniques technical Webcasts that are designed to provide you with the most popular time-saving tricks that Pro/ENGINEER users of all skill levels will find useful. Get more out of your maintenance dollars!

[Tips & Techniques: Work Smarter Not Harder!](#)

Special Hardware offers for PTC Customers

- <http://www.hp.com/go/ptc>
- <http://www.hp.com/go/ptcworkstation>

PTC Sponsored Events

- <http://www.ptc.com/company/news/events/index.htm>

Explore what is new with the Pro/ENGINEER Wildfire family!

<http://www.ptc.com/go/showcase>

Connect with PTC using the latest Social Networking resources:

facebook



LinkedIn

YouTube

Also visit <http://social-product-development.blogspot.com/>

[Back To Top](#)

Upcoming Events & Training Class Schedules

Upcoming, 2010 Your local Pro/Engineer User Groups
<http://www.ptcuser.org/rugs/>

June 12 – 15, 2011 Las Vegas, NV USA
PTC/USER World Event
<http://www.ptcuser.org/>

Events

Our seminars and conferences seek to provide you with relevant information regarding product development trends in your industry as well as innovative software learning experiences. Think of them as a constructive day off where you can share experiences and swap ideas with your peers.

If you can't manage to get away, we'll bring it to you. Check back often for regularly scheduled live webcast events.

[You're Invited to Attend...](#)

Please visit the [PTC Education Services](#) website for the latest training information including course descriptions, schedules, locations, and pricing.

- Attend a course at any PTC Center and receive a **free** copy of Pro/ENGINEER Wildfire Student Edition!

<http://www.ptc.com/services/edserv/index.htm>

Live Instructor-Lead Virtual PTC Training Courses

Virtual Classrooms provide interactive learning with a trained PTC instructor in convenient and manageable sessions that last approximately 4 hours over a series of days. It's easy to join a class right from your desk using a phone or voice-over IP technology.

Sessions are performed just like a traditional ILT (including interactive exercises where you and the instructor can work on lab exercises together) and feature some of our most popular ILT courses. These sessions cover the exact same material as the traditional ILT in-center courses. Also look for some of our most frequently requested mini-topics delivered in the same format that are only an hour - two hours in duration.

If you have any questions about these sessions or would like to see getting other courses, not on this list, on the schedule please feel free to contact me for more details. They are a great way to bring training to you without you having to worry about location or being out from work for long stretches.

You can register for these sessions just as you would for any normal ILT class either by:

1. calling order admin at <http://www.ptc.com/services/edserv/training/registra.htm> or
2. you can go to PTC University directly at <http://www.ptc.com/learning> and submit a registration request directly. All you have to do is search the catalog by typing in “virtual” in the search field and you will see a listing.

PTC

Note: This PTC E-Newsletter will continue to be used for the following:

- 1) Inform you on events related to PTC products (user groups, conferences, training schedules, etc.)
- 2) Educate you on solutions that are available at PTC
- 3) Tips & Techniques using PTC Products

Note: These messages are compiled in the local PTC office and will be distributed via e-mail.

[Back To Top](#)