

new!

**PTC Product Focus:** [A\) Pro/INTRALINK 8.0 Fundamentals](#)

[B\) What's New in Windchill 8.0](#)

new!

**Tips of the Week:** [A\) Configuring the Pro/INTRALINK 8.0 Workspace Browser](#)

[B\) Enabling New Custom Change Monitor Reports in Windchill PDMLink](#)

**Announcements:** [Most Recent Announcements](#)

**Upcoming Events & Training Schedule:** [Events & Training Schedule](#)

## PTC Product Focus

### Pro/INTRALINK 8.0 – Server Registry & Data Storage Fundamentals

As covered in last month's edition, Pro/INTRALINK 8.0 is the latest version of PTC's industry leading Pro/ENGINEER Workgroup Data Management solution. This exciting new release includes significant enhancements to simplify Pro/ENGINEER data management and improve usability through seamless integration. Performance and security enhancements further deliver end-user productivity and deliver on PTC's Product Development System vision.

To deliver these improvements, this latest release of Pro/INTRALINK has been built on a new Web-based architecture powered by the Windchill 8.0 platform. In fact, this is a subset of the full enterprise PLM capabilities offered by PDMLink. This has allowed PTC to deliver a common set of Pro/ENGINEER data management capabilities for Pro/INTRALINK and all Windchill Solutions. Therefore, if your enterprise should decide to deploy one of these other Windchill-based solutions, you will be assured access to the same powerful Pro/ENGINEER data management capabilities that are provided in Pro/INTRALINK 8.0 - plus the new capabilities provided by these solutions!

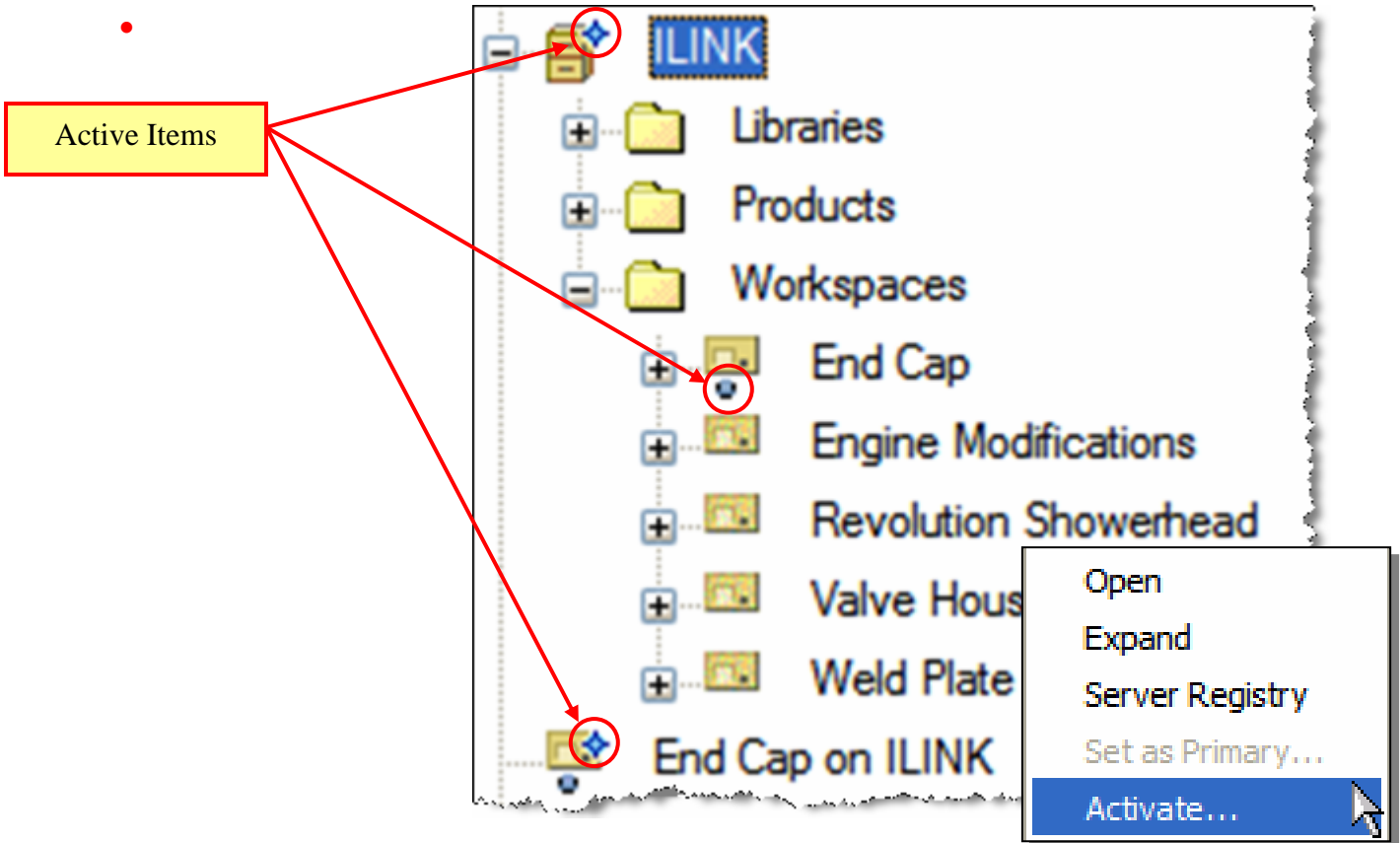
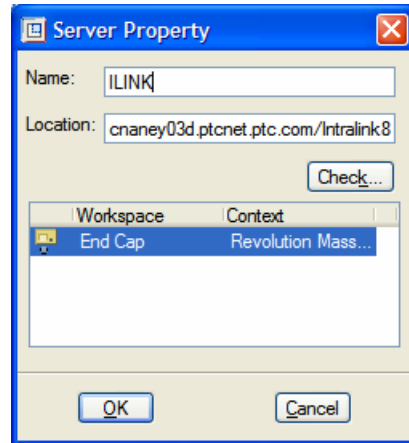
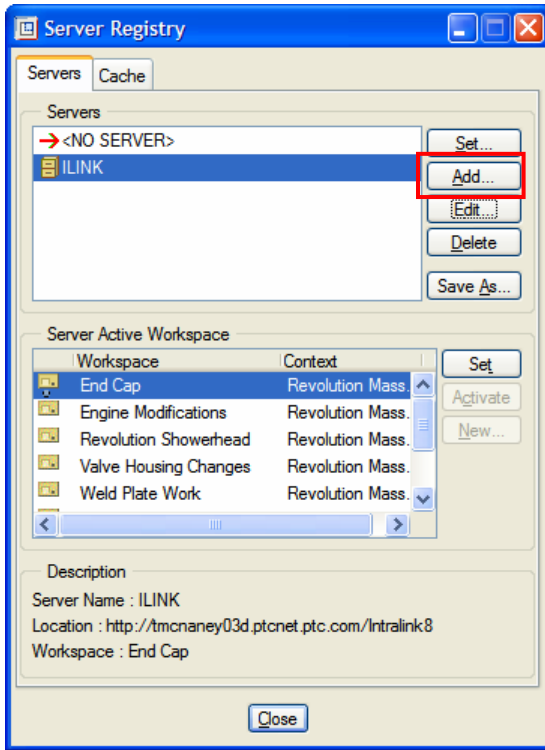
We realize that this release represents a significant change for existing Pro/INTRALINK 3.x users and administrators, and are committed to helping you make a smooth transition.

#### Server Registry

- The first step is to establish a connection with the data source. This concept was introduced with Pro/E Wildfire, and could also be used to configure a linked session with Pro/INTRALINK 3.x. The connected nature of Pro/ENGINEER Wildfire and the Navigator make this easy. Pro/ENGINEER even supports the concept of a Primary and Secondary server, and will remember these settings between sessions.
- Select **Tools > Server Registry**
- Use the **Add...** button to enter the Name and URL to the Pro/INTRALINK 8.0 Server. Pressing the **Check...** button will confirm this location, and if successful, will present a list

of Workspaces. The Active Server and Workspace will be indicated with a blue “light” and will appear in the Folder Navigator. (double-click, or press **Set ...**)

- The Name field is important, and will be used in any paths specified by browsing to Product and Library folders when setting config.pro options, etc.



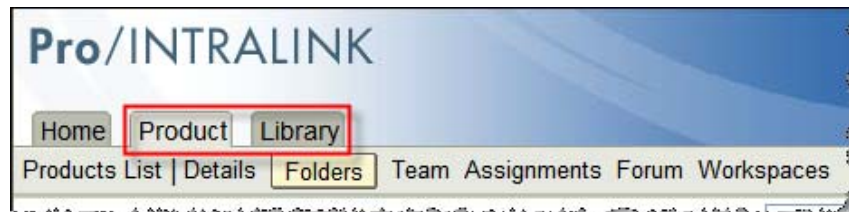
## Where is my Data, really?

Again, as a user familiar with Pro/INTRALINK 3.x it is common to be confused by some of the “new” terminology, or by existing terms that now seem to mean something different. I hope to clarify this by explaining how data travels between a Pro/ENGINEER session and a shared area on the server (Commonspace). Let’s break this down into two sections:

1. Storage Locations
2. Data Transfer Actions

### **Storage Locations**

On the server side, data is organized into contexts known as Products and Libraries. Together these form roughly the equivalent of the Commonspace.



**Figure 1 - Products & Libraries**

**Products** enable data to be organized by your physical product lines for team definition, access control and collaborative development; information can also be logically organized within folders.

**Libraries** are used to warehouse business objects that are re-used across products, or that may be more general in nature. For example: drawing formats, template models, UDFs, design guides, etc.

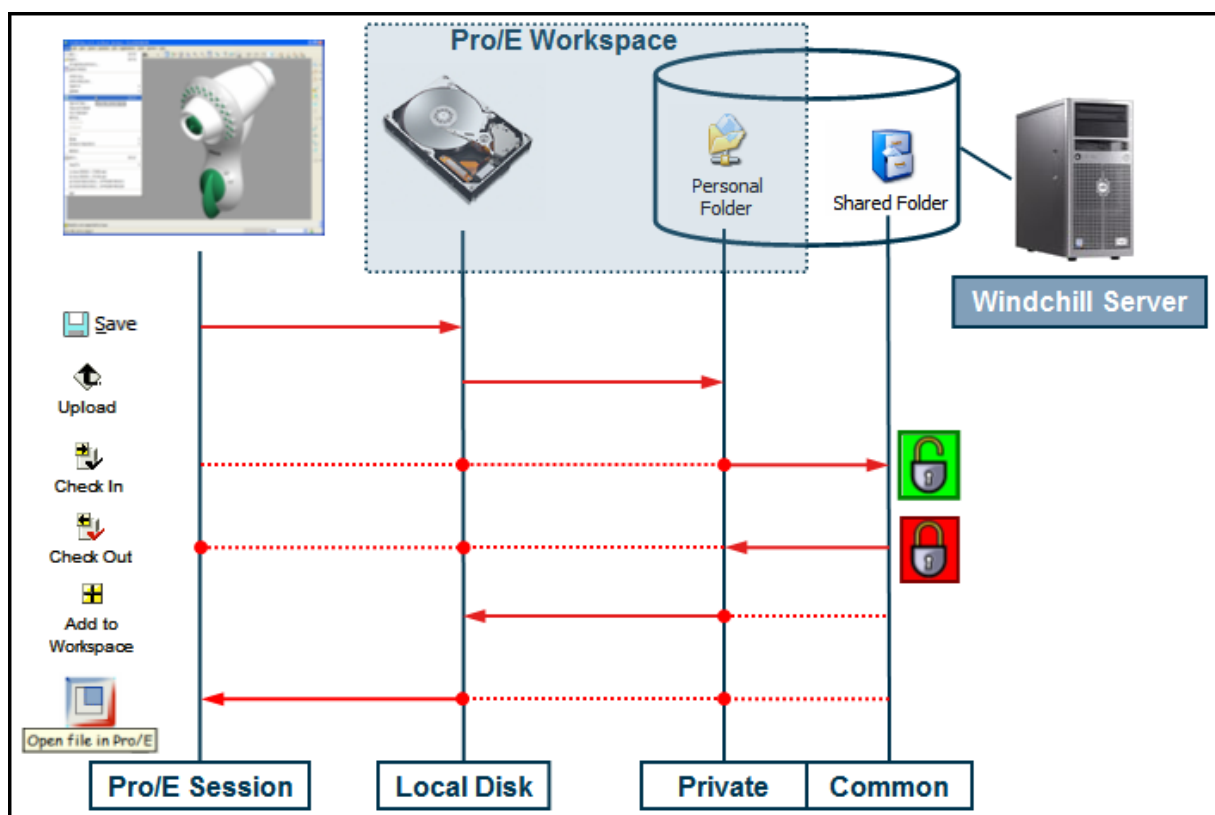
On the client side, data is created and stored in **Workspaces**. These virtual briefcases enable users to organize their work-in-progress without forfeiting control and communication with other team members. In contrast to Pro/INTRALINK 3.x, the “real” workspace is actually located on the server as a personal cabinet. There is also a local content cache, which is a temporary storage area. This enables the fastest local save/retrieve operations, and can synchronize data in the background through upload/download actions. This offers several advantages, like “roaming” workspaces and reduced risk of data loss since administrators include servers in backup and DR plans. Of course, users must still be disciplined to perform uploads...

Please refer to the Tips section in this edition for information on controlling the location of the local content cache (LCC).

You can also manage certain aspects about the cache from within Pro/E using the **Tools > Server Registry > Cache** tab.

## Data Transfer Actions

This visual map shows the storage locations horizontally, and the actions vertically on the left.



**Figure 2 - Data Storage / Flow**

\* Red dotted lines are auto-operations resulting from a single shortcut Pro/E action.

The Shared Folder will be the Product or Library context that was specified when the Workspace was created. With proper access rights, it is possible to move all versions of an item to another product or library later if desired. Note that the Cut and Paste actions only move a single version.

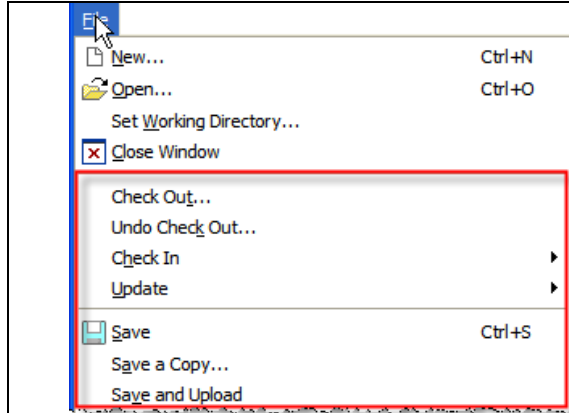
There is a very subtle, but important, difference between viewing a Workspace from a standalone browser versus the one embedded in Pro/E Wildfire:

- Standalone - ONLY “sees” content in the Private area on the server
- Embedded - UNION of content in Local Disk Cache & Private Folder on server

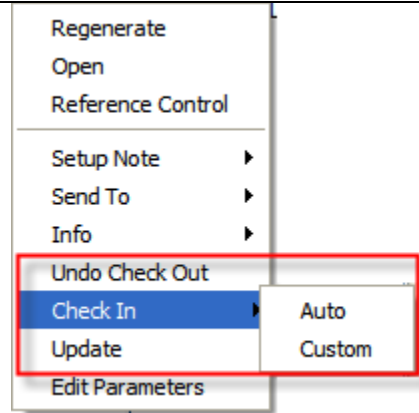
Keep in mind that only Pro/ENGINEER file types are managed in the Workspace. Other document types remain in the native OS file system, and are checked in when they need to be shared.

The object actions can be selected in multiple places - either in the HTML UI, or seamlessly as part of the Pro/E design experience. PTC has tried to use consistent icons and commands in:

- Pro/E Wildfire pull-down menus & Model Tree context menus (see figures)
- Pro/INTRALINK menus, icons, drop-down lists



**Figure 3 - Pro/E Wildfire File Menu**



**Figure 4 - Pro/E Model Tree Context Menu**

**Comparison of frequently used commands:**

Pro/INTRALINK 3.x	Pro/INTRALINK 8.0
<b>Check out</b>	<b>Add to Workspace</b> or <b>Download</b> is the equivalent operation that copies content and metadata without restricting others access or ability to make changes.
<b>Check in</b>	<b>Save &amp; Upload</b> + <b>Check In</b> are the equivalent of iterating modified objects. From within Pro/E, the single operation <b>Check In &gt; Auto</b> is also available.
<b>Lock</b>	Locking an object is an automatic part of the check-out operation. To clear the lock, use the <b>Undo Checkout</b> action.
<b>Intent to Modify</b>	Protect the object from modification by another user by checking it out. An object can only be checked-out to one user or workspace.
<b>Read Only</b>	By default, objects are not editable unless checked out.
<b>Delete (WS object)</b>	Use the <b>Workspace</b> action <b>Remove</b> to delete an object.
<b>Update</b>	This command remains the same, and is used to replace objects <b>In Session</b> or in the <b>Workspace</b> with the latest.

Please review the document “[Getting Started with Pro/INTRALINK 8.0.](#)” If you have access to a running system, this PDF can be found under the **Publications** link. If not, you can find it online [here](#). It describes core concepts and will direct the reader to more detailed documentation. The appendices have a more thorough list of terminology differences and a nice glossary.

**Ongoing Information about Pro/INTRALINK 8.0**

The latest developments surrounding Pro/INTRALINK 8.0 are available from product experts and peers in the community, so please visit the Pro/INTRALINK 8.0 Advisor Site:

<http://www.ptc.com/go/prointranlink> -- **Less Wait, More Create!**

[Back To Top](#)

**PTC Product Focus**

**What's New in Windchill 8.0**

[Click Here To View](#)

[Back To Top](#)

## Tips of the Week

### Configuring the Pro/INTRALINK 8.0 Workspace Browser

Pro/ENGINEER Wildfire uses the embedded browser to view the workspace to manage work-in-process data. Each workspace uses a local disk cache to ensure fast saves and optimize transfers to the server while safeguarding data integrity. The actual cache is transparent to the end-user, and is used to store changed items prior to an upload to the server, and/or keep copies of items downloaded from the server to speed up subsequent retrieval into Pro/ENGINEER.

There are many options that can be set to improve the usability and alter behavior according to user preferences.

#### Controlling the Storage Location for the Workspace / Local Cache

It may be beneficial to put the cache on a larger / faster disk than provided by the default location. These environment variables can be set by the user or administrator to manage this:

Variable	Default Value	Description
PTC_WF_ROOT	%USERPROFILE%\Application Data\PTC\ProENGINEER\Wildfire\	Overrides the default location of .wf directory which contains .Settings and .Cache. <i>Note: Existing data will not be copied to a new location automatically.</i>
PTC_WF_CACHE	%PTC_WF_ROOT%\cache	Define a folder in which all new workspace caches will be stored. <i>Note: Existing workspaces will continue to reside in %PTC_WF_ROOT%\cache</i>

In order to optimize performance, it is important that the cache is sized properly to accommodate the largest anticipated data set (including new and modified objects). Otherwise, data will be unnecessarily streamed from the server – which will kill performance (especially in an environment with slow network connectivity or WAN).

Therefore, it is recommended that the following config.pro options also be set:

- dm\_cache\_mode            all
- dm\_cache\_size            size in MB (default = 400 MB)

#### Configuring properties in site.xconf

- Edit this text file located in Pro/INTRALINK loadpoint home as indicated below.

##### **Configuring Table Scrollbar Display**

Depending on the table view specified, the width of the table may exceed the width of the embedded browser. It is often inconvenient to scroll horizontally to reveal this control. It can also be plain confusing for the user to have two vertical scrollbars side-by-side. A site-wide property allows you to change the location of table scrollbars to the left side.

```
<Property name="com.ptc.core.htmlcomp.jstable.positionScrollbarLeftside"
overridable="true" targetFile="codebase/wt.properties" value="true"/>
```

### **Configuring Automatic Scrolling**

When the workspace is displayed, the page automatically scrolls to the beginning of the item list table. To disable this behavior, set the following property:

```
<Property name="com.ptc.windchill.uwgm.cadx.ws.scrollToTable" overridable="true" targetFile="codebase/wt.properties" value="false"/>
```

### **Configuring the Number of Workspace Rows Displayed**

By default, the number of rows displayed in the item table is based upon the height of the window. To display a fixed number of rows (for example, 10 for Windows), set the property to false, as follows:

```
<Property name="com.ptc.windchill.uwgm.cadx.ws.sizeToWindow" overridable="true" targetFile="codebase/wt.properties" value="false"/>
```

### **Propogating Modifications to site.xconf**

Save the site.xconf, then from within a Windchill shell enter:

```
xconfmanager -p
```

**For additional information, please refer to the following Reference Guides:**

- [Windchill® System Administrator's Guide](#)
- [Windchill® Business Administrator's Guide](#)

[Back To Top](#)

### **Tips of the Week**

**Enabling New Custom Change Monitor Reports in Windchill PDMLink**

[Click Here To View](#)

[Back To Top](#)



## Announcements

### Educational Resource Library

Learn things you always wanted to do - but didn't know you could.

This one stop educational resource library will help you learn more about PTC Solutions and provide you with technical materials developed by the product experts to help you become more productive.

Get tutorials, how-to videos and expert advice for:

- Pro/ENGINEER
  - Conceptual and Industrial Design
  - Detailed Design
  - Simulation/Analysis
  - Production
  - Design Collaboration
- Windchill PDMLink
- Windchill ProjectLink
- Pro/INTRALINK
- PTC Online Tools

Check out the [Educational Resource Library](#) today.

### Live Instructor-Lead Virtual PTC Training Courses

PTC will be offering a series of Virtual Classrooms this quarter for you looking to save money (15% off ILT prices) and cut down on travel.

Virtual Classrooms provide interactive learning with a trained PTC instructor in convenient and manageable sessions that last approximately 4 hours over a series of days. It's easy to join a class right from your desk using a phone or voice-over IP technology.

Sessions are performed just like a traditional ILT (including interactive exercises where you and the instructor can work on lab exercises together) and feature some of our most popular ILT courses. These sessions cover the exact same material as the traditional ILT in-center courses. Also look for some of our most frequently requested mini-topics delivered in the same format that are only an hour - two hours in duration.

If you have any questions about these sessions or would like to see getting other courses, not on this list, on the schedule please feel free to contact me for more details. They are a great way to bring training to you without you having to worry about location or being out from work for long stretches.

You can register for these sessions just as you would for any normal ILT class either by:

1. calling order admin at <http://www.ptc.com/services/edserv/training/registra.htm> or

2. you can go to PTC University directly at <http://www.ptc.com/learning> and submit a registration request directly. All you have to do is search the catalog by typing in "virtual" in the search field and you will see a listing.

## PTC Tips & Techniques Newsletter Archives

Miss an issue! Can't find that awesome technique you read about? Fear not, you can click on the link below and go through our Customer PTC E-Newsletter archives.

[Click Here To Access](#)

It's better than finding the Covenant of the Ark!

## PTC Tips & Techniques Webcasts: Work Smarter. Not Harder.

Click below to see regularly scheduled Tips & Techniques technical Webcasts that are designed to provide you with the most popular time-saving tricks that Pro/ENGINEER users of all skill levels will find useful. Get more out of your maintenance dollars!

[Tips & Techniques: Work Smarter Not Harder!](#)

---

---

Thinking About Pro/ENGINEER Wildfire? Check this out.



<http://www.ptc.com/go/engineering/index.htm>

---

---

## **E-PROFILES IS HERE!!**

We have been eagerly anticipating the debut of the new electronic version of Profiles Magazine and now it is here! This new web site will supplement the print edition of the magazine and will provide new useful features not feasible with paper media. e-Profiles will provide you with 24x7, worldwide access to key information previously available exclusively in the print version. "Tips & Tricks," a popular feature pioneered by Pro/USER, has also moved to the web and will be expanded as the site matures.

Please take a few minutes to check out this new web site. We don't think you will be disappointed.

<http://profilesmagazine.com/>

---

---

[Back To Top](#)

## Upcoming Events & Training Class Schedules

Upcoming, 2005                      Your local Pro/Engineer User Groups  
<http://www.ptcuser.org/rugs/>

Upcoming, 2006                      TBD  
PTC/USER International Conference  
<http://www.ptcuser.org/>

### Events

Our seminars and conferences seek to provide you with relevant information regarding product development trends in your industry as well as innovative software learning experiences. Think of them as a constructive day off where you can share experiences and swap ideas with your peers.

If you can't manage to get away, we'll bring it to you. Check back often for regularly scheduled live webcast events.

[You're Invited to Attend...](#)

Please visit the [PTC Education Services](#) website for the latest training information including course descriptions, schedules, locations, and pricing.

- Attend a course at any PTC Center and receive a **free** copy of Pro/ENGINEER Wildfire Student Edition!

<http://www.ptc.com/services/edserv/index.htm>

### Live Instructor-Lead Virtual PTC Training Courses

PTC will be offering a series of Virtual Classrooms this quarter for you looking to save money (15% off ILT prices) and cut down on travel.

Virtual Classrooms provide interactive learning with a trained PTC instructor in convenient and manageable sessions that last approximately 4 hours over a series of days. It's easy to join a class right from your desk using a phone or voice-over IP technology.

Sessions are performed just like a traditional ILT (including interactive exercises where you and the instructor can work on lab exercises together) and feature some of our most popular ILT courses. These sessions cover the exact same material as the traditional ILT in-center courses. Also look for some of our most frequently requested mini-topics delivered in the same format that are only an hour - two hours in duration.

If you have any questions about these sessions or would like to see getting other courses, not on this list, on the schedule please feel free to contact me for more details. They are a great way to

bring training to you without you having to worry about location or being out from work for long stretches.

You can register for these sessions just as you would for any normal ILT class either by:

1. calling order admin at <http://www.ptc.com/services/edserv/training/registra.htm> or
2. you can go to PTC University directly at <http://www.ptc.com/learning> and submit a registration request directly. All you have to do is search the catalog by typing in “virtual” in the search field and you will see a listing.

## PTC

Note: This PTC E-Newsletter will continue to be used for the following:

- 1) Inform you on events related to PTC products (user groups, conferences, training schedules, etc.)
- 2) Educate you on solutions that are available at PTC
- 3) Tips & Techniques using PTC Products

Note: These messages are compiled in the local PTC office and will be distributed via e-mail.

[Back To Top](#)