

PTC Product Focus: A) [What's New in Pro/ENGINEER Mechanica for Wildfire 5.0](#)

B) [Windchill QMS - CAPA](#)

Tips of the Month: A) [Creating Shell Elements in Wildfire 5.0](#)

B) [Improving the Performance When Browsing Windchill Through the Embedded Browser in Wildfire 5.0](#)

Announcements: [Most Recent Announcements](#)

Upcoming Events & Training Schedule: [Events & Training Schedule](#)

PTC Product Focus

What's New in Pro/ENGINEER Mechanica for Wildfire 5.0

[Click Here To View](#)

[Back To Top](#)

PTC Product Focus

Windchill QMS - CAPA

Please note that the information in this section may be subject to change until official release.

Some of you may have noticed that with the latest installer for Windchill 9.1 M050, there is a new component called "Windchill QMS - CAPA". It is a new module that will be released in September.

This is a true merge of technology and design from PTC's old Quality Management System (QMS) NetRM and Windchill. This is important to a QMS user because you have to investigate a lot of different issues and needing the ability to essentially ask any question of the data while accomplishing this without requiring an understanding of the data/object model or needing IT support to write a report. This module will speed up this process.

A user will use the Windchill Query Builder as a base and add NetRM Style Adhoc features to provide single pass query capability, additional graphing and charting features while isolating users from data structure knowledge and can complement Cognos.

What is Adhoc?

- NetRM Adhoc is an end user reporting tool that allows access to all data fields
- Isolates the end user from details of the data / object structures
- This tool came with the acquisition of NetRegulus by PTC

How does a user access this feature?

- Access is controlled via “Adhoc Pages” which present a pick list of fields
- Pages are constructed by an administrator using the Query Builder
- Default Master Pages are configured & shipped with product
- New Pages can be added at will by authorized users

Key Features / Capabilities of Adhoc:

1. USER- SELECT, RESTRICT, RETRIEVE

The ability to select, restrict, retrieve 1-N (All) fields of data from QMS objects without requiring any knowledge of the underlying technical structure that houses this data.

2. LABEL MATCH

The ability to select those fields using the same labels as on the screens.

3. NAVIGATION

The ability to use the data to Link/Navigate to the actual records

4. AND-OR

The ability to add logic conditions for the retrieval such as and / or

5. EXPORT

The ability to export the data to spreadsheet for further manipulation

6. SAVE

The ability to save a query with restrictions and selections pre-defined.

7. SCHEDULE

The ability to schedule a query to run and email the results or a link to the results.

8. CHARTING

The ability to view data graphically.

9. WATCHDOG

The ability to use the resultant data set to drive automated processing for notifications and automated actions like CAPA creation

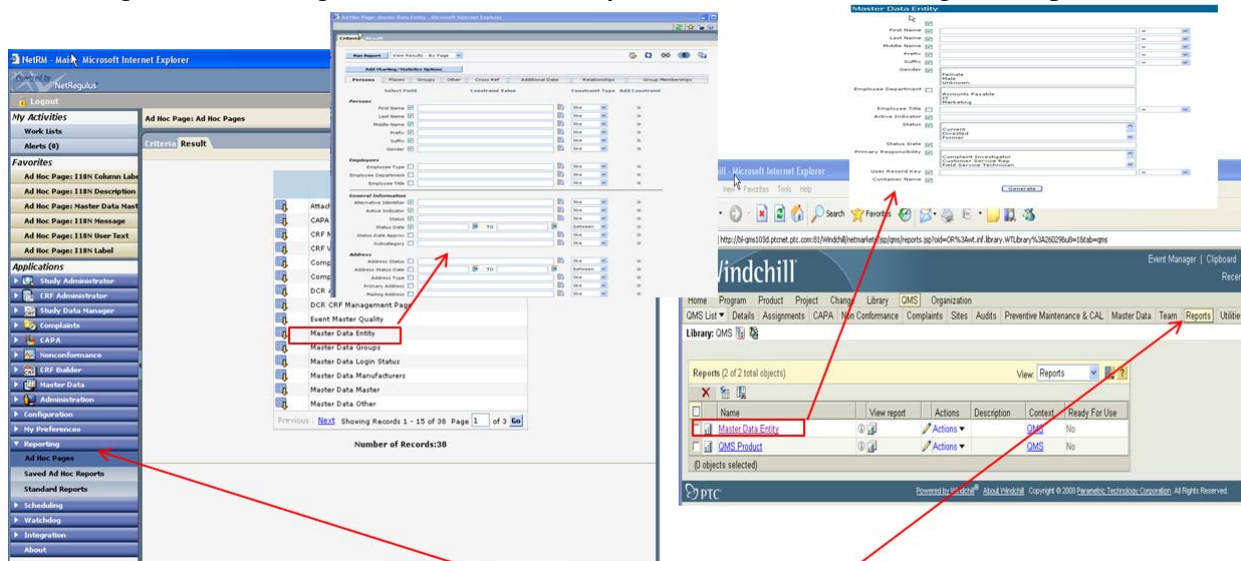
10. ADMIN

Following are the admin user key features, Master Page, Copying and Sub Pages, Security

These features are being merged to Windchill in a phased rollout plan. This newsletter will only look at Phase I for September which will focus on:

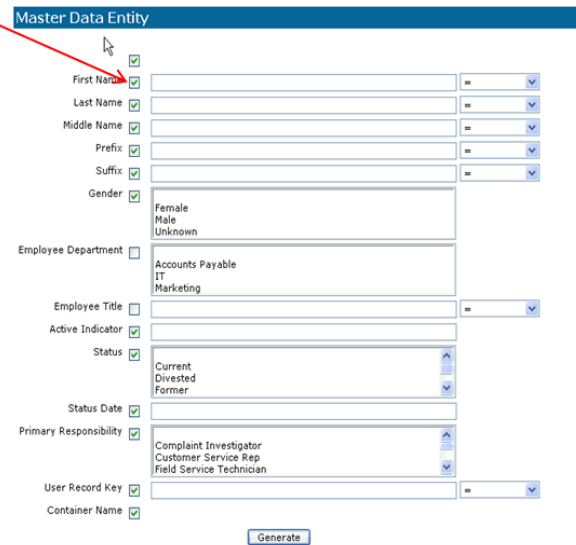
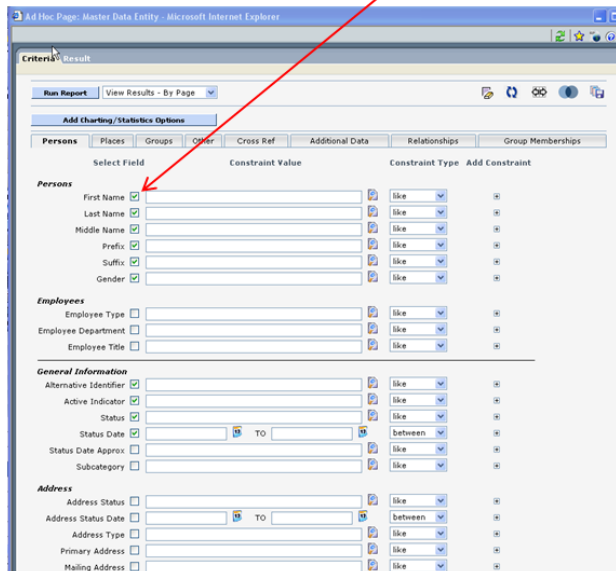
- User- Select, Restrict, Retrieve
- Navigation
- Export

Accessing the Adhoc Pages is done in a security controlled fashion through the reports menu.



Access via report menu in both – Launched from report list

Select and Restrict follows same Paradigm



Both Generate an exportable results set

Ad Hoc Page: Master Data Entity - Microsoft Internet Explorer

Criteria Result

| First Name | Last Name | Middle Name | Prefix | Suffix | Gender | Alternative Identifier | Active Indicator | Status | Status Date |
|------------|-------------|-------------|--------|--------|--------|------------------------|------------------|---------|-------------|
| Arthur | Fitt | | | | Male | | Yes | Current | 15-Apr |
| Araad | Alkhamla | | | | | | Yes | Current | 02-May |
| | BLD205 | | | | | BLD205 | Yes | Current | 13-Jan |
| | BLD205W | | | | | BLD205W | Yes | Current | 13-Jan |
| Bernadine | Wandaecker | | | | Female | | Yes | Current | 16-Apr |
| Bruce | Evans | | | | | | Yes | Current | 21-Oct |
| Bruce | Whitney | | | | | | Yes | Current | 09-Sep |
| CAPA | Coord | | | | Female | | Yes | Current | 03-Oct |
| Charles | Consumer | | | | | C123 | Yes | Current | |
| Chris | Bahner | | | | | | Yes | Current | |
| Complaint | Coordinator | | | | Male | | Yes | Current | |
| Corp | Voley | | | | | | Yes | Current | |
| David | Wiley | | | | Male | | Yes | Current | 24-Jun |
| Dick | Christensen | | | | | | Yes | Current | 21-Oct |
| Felix | Adams | | | | Male | | Yes | Current | 21-Sep |

Showing Records 1 - 15 of 66 Page 1 of 5

Number of Records:66

Filter Criteria:
Category = Z

Report: Master Data Entity

Executed By: demo
Time Of Execution: 2010-02-10 16:01:29 CST
Records Retrieved: 3

| First Name | Last Name | Middle Name | Prefix | Suffix | Gender | Active Indicator | Status | Status Date | Primary Responsibility | User Record Key | Container Name |
|------------|-----------|-------------|--------|--------|--------|------------------|---------|-------------------------|------------------------|-----------------|----------------|
| Felix | Adams | G | Mr | | Female | 1 | Current | 2010-02-08 18:00:00 CST | Complaint Investigator | FAT | GMS |
| Henry | Pfische | Richard | Dr | Sr | Male | 0 | Current | 2010-02-01 18:00:00 CST | Full Time | | GMS |
| Jeffery | Whittle | | Mr | | Female | 1 | Current | | Complaint Investigator | | GMS |

[Back To Top](#)

Tips of the Month

Creating Shell Elements in Wildfire 5.0

[Click Here To View](#)

[Back To Top](#)

Tips of the Month

Improving the Performance When Browsing Windchill Through the Embedded Browser in Wildfire 5.0

Here are a couple of new client configuration and work group manager techniques that are now possible due to the release of Pro/ENGINEER Wildfire 5.0 to improve the performance of the embedded web browser to browse Windchill.

Use the Mozilla Browser

Challenge

- Scrolling very large workspaces may be slow
- Refreshing very large workspaces may be slow
- Navigating to/from pages with tables with many rows may be slow

Description

- Use Pro/ENGINEER Windchill 5.0
- Set config option “windows_browser_type” to use Mozilla instead of Internet Explorer for the embedded browser

Benefit

- 70%+ faster scrolling performance
- 20% faster page generation and refresh performance
- 18-40% faster workgroup manager operations



Separate Pro/ENGINEER & Embedded Browser Processes

Challenge

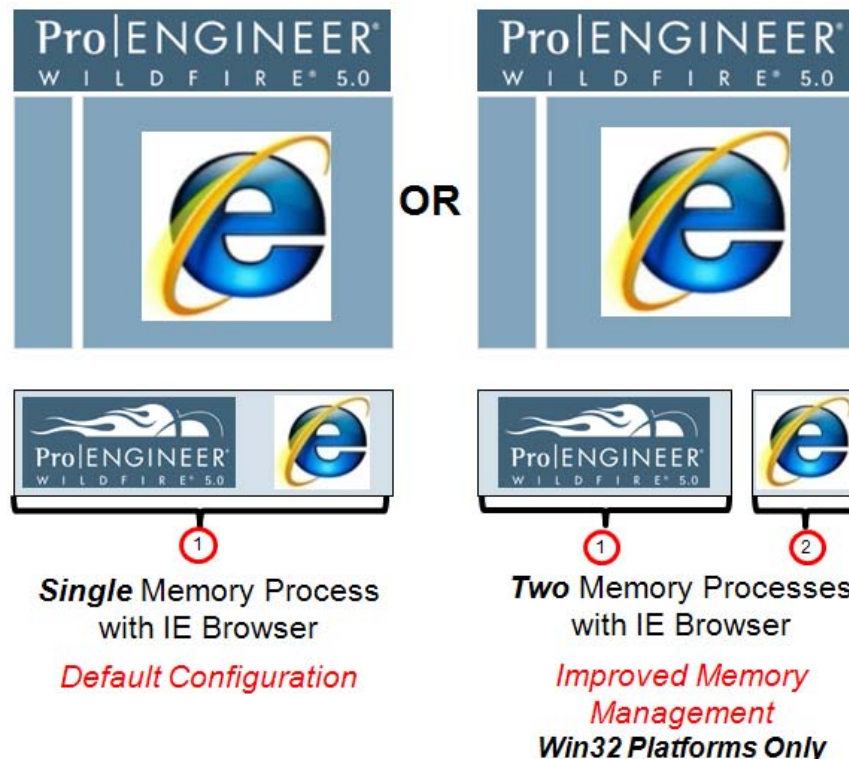
- Application slows or crashes due to insufficient memory (Virtual Bytes) for Pro/ENGINEER and WGM Operations with Large Data Sets
 - Use of virtual address space does not necessarily imply corresponding use of either disk or main memory pages.
 - Pro/ENGINEER will exit when Virtual Bytes > 2000Mb (or 3000MB on 32-bit XP w/3gb switch).
 - Virtual space is finite, and the process can limit its ability to load libraries.

Description

- Use Pro/ENGINEER Windchill 5.0 on Win32 Platforms
- Configure Pro/ENGINEER and Internet Explore used in the embedded browser to run as separate processes instead of a single process
- Set config option “windows_browser_type” to “ie_in_sep_process”

Benefit

- Doubles the total amount of virtual byte memory available to Pro/ENGINEER + Embedded Browser
- Improves Pro/ENGINEER stability with large datasets on Win32



Note: Separate Process configuration not necessary or available on Win64 platforms

Use Tabbed Browsing

Challenge

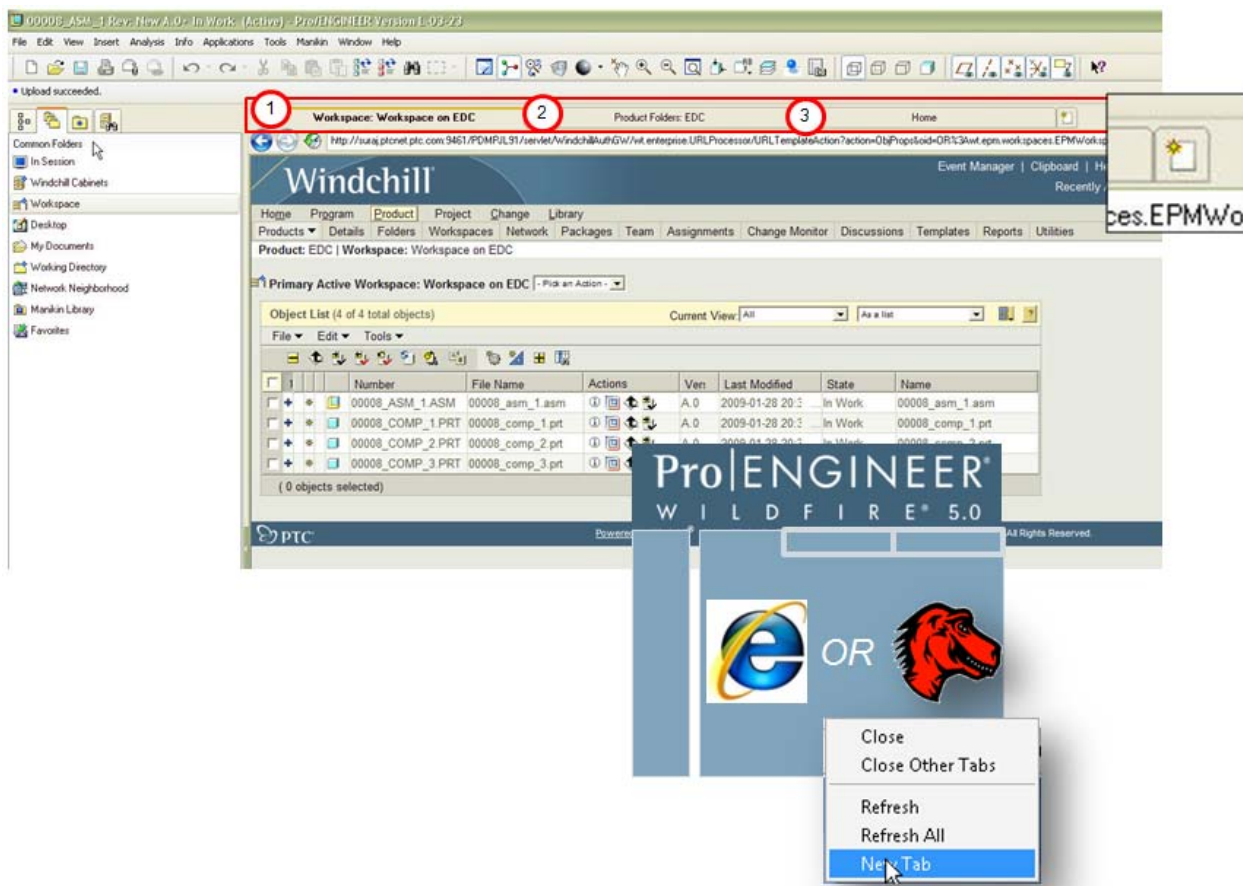
- Navigating to another Windchill page from within the embedded browser can be time consuming requiring multiple clicks and page refreshes
- Accessing or looking at multiple Windchill pages from within the embedded browser requires multiple clicks and page refreshes

Description

- Use tabbed browsing in Pro/ENGINEER Wildfire 5.0 to open multiple web pages simultaneously in the embedded browser
- Tabbed browsing supported with Pro/ENGINEER Wildfire 5.0 using Internet Explorer or Mozilla

Benefit

- Less user time spend navigating back and forth between Windchill pages
- Eliminate click and refresh navigating



[Back To Top](#)

Announcements

The PTC/USER Portal is getting an updated, fresh user interface.



The functionality is remaining the same but the site is being redesigned to allow for easier navigation by users.

You will also begin to see blog articles being posted by the PTC/USER Board of Directors highlighting different aspects of your community and other relevant info.

The four major areas in which our site design has been updated are:

1. Redesigned Header Area
2. Simplified Navigation
3. New Site Wide Right Side Bar
4. Other Design Elements

For more details on these changes you can read about them in the [What's New](#) guide.

Enjoy the redesigned site and we look forward to your feedback.

Evan Caille

PTC/USER Board of Directors

PTC Tips & Techniques Newsletter Archives

Did you miss an issue? Can't find that awesome technique you read about? Fear not, you can click on the link below and go through our Customer PTC E-Newsletter archives.

[Customer Care Zone](#)

PTC Tips & Techniques Webcasts: Work Smarter. Not Harder.

Click below to see regularly scheduled Tips & Techniques technical Webcasts that are designed to provide you with the most popular time-saving tricks that Pro/ENGINEER users of all skill levels will find useful. Get more out of your maintenance dollars!

[Tips & Techniques: Work Smarter Not Harder!](#)

Special Hardware offers for PTC Customers

- <http://www.hp.com/go/ptc>
- <http://www.hp.com/go/ptcworkstation>

PTC Sponsored Events

- <http://www.ptc.com/company/news/events/index.htm>

Explore what is new with the Pro/ENGINEER Wildfire family!

<http://www.ptc.com/go/showcase>

Connect with PTC using the latest Social Networking resources:

facebook



LinkedIn

YouTube

Also visit <http://social-product-development.blogspot.com/>

[Back To Top](#)

Upcoming Events & Training Class Schedules

Upcoming, 2010 Your local Pro/Engineer User Groups
<http://www.ptcuser.org/rugs/>

June 12 – 15, 2011 Las Vegas, NV USA
PTC/USER World Event
<http://www.ptcuser.org/>

Events

Our seminars and conferences seek to provide you with relevant information regarding product development trends in your industry as well as innovative software learning experiences. Think of them as a constructive day off where you can share experiences and swap ideas with your peers.

If you can't manage to get away, we'll bring it to you. Check back often for regularly scheduled live webcast events.

[You're Invited to Attend...](#)

Please visit the [PTC Education Services](#) website for the latest training information including course descriptions, schedules, locations, and pricing.

- Attend a course at any PTC Center and receive a **free** copy of Pro/ENGINEER Wildfire Student Edition!

<http://www.ptc.com/services/edserv/index.htm>

Live Instructor-Lead Virtual PTC Training Courses

Virtual Classrooms provide interactive learning with a trained PTC instructor in convenient and manageable sessions that last approximately 4 hours over a series of days. It's easy to join a class right from your desk using a phone or voice-over IP technology.

Sessions are performed just like a traditional ILT (including interactive exercises where you and the instructor can work on lab exercises together) and feature some of our most popular ILT courses. These sessions cover the exact same material as the traditional ILT in-center courses. Also look for some of our most frequently requested mini-topics delivered in the same format that are only an hour - two hours in duration.

If you have any questions about these sessions or would like to see getting other courses, not on this list, on the schedule please feel free to contact me for more details. They are a great way to bring training to you without you having to worry about location or being out from work for long stretches.

You can register for these sessions just as you would for any normal ILT class either by:

1. calling order admin at <http://www.ptc.com/services/edserv/training/registra.htm> or
2. you can go to PTC University directly at <http://www.ptc.com/learning> and submit a registration request directly. All you have to do is search the catalog by typing in “virtual” in the search field and you will see a listing.

PTC

Note: This PTC E-Newsletter will continue to be used for the following:

- 1) Inform you on events related to PTC products (user groups, conferences, training schedules, etc.)
- 2) Educate you on solutions that are available at PTC
- 3) Tips & Techniques using PTC Products

Note: These messages are compiled in the local PTC office and will be distributed via e-mail.

[Back To Top](#)