



new!

**PTC Product Focus:** A) [New Machining Capability – Pro/TOOLMAKER](#)

B) [SolidWorks Workgroup Manager](#)

new!

**Tips of the Month:** A) [Creating Mirror Image Parts](#)

B) [Managing Configurations from SolidWorks with Windchill](#)

**Announcements:** [Most Recent Announcements](#)

**Upcoming Events & Training Schedule:** [Events & Training Schedule](#)

## PTC Product Focus

### New Tool & Die Machining Capability – Pro/TOOLMAKER

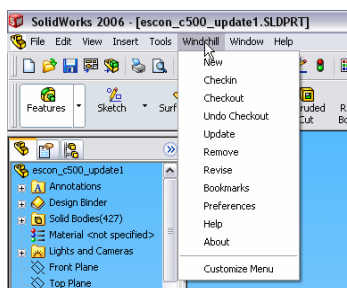
[Click Here To View](#)

[Back To Top](#)

## PTC Product Focus

### SolidWorks Workgroup Manager

The Windchill Product Development System provides an integral architecture to manage mechanical, electrical and software data as well as related documentation that is created during the product development process. The SolidWorks Workgroup Manager extends Windchill's capabilities to the engineer's desktop to effectively manage SolidWorks data. Windchill menus are embedded directly inside of SolidWorks to execute data management activities such as check out, check in, revise and other tasks related to managing the designs.



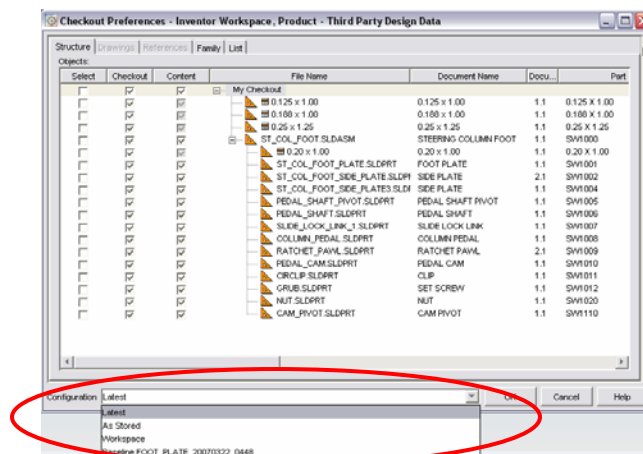
The SolidWorks Workgroup Manager supports managing parts, assemblies and drawings as well as external references. The workgroup manager can also manage configurations of parts and assemblies. This provides the flexibility designers need when creating the product design knowing that they will still be able to use the advanced capabilities in SolidWorks. They can

continue to develop products the way they are accustomed to and have confidence that they will be effectively managed.

The SolidWorks Workgroup Manager will map properties from within the SolidWorks models and drawings to Windchill attributes. This mapping provides enterprise users the ability to search and find information based on the values of those properties, making it easier and more efficient to find data. Another benefit for the enterprise user is the ability to retrieve an accurate bill of material that is generated automatically from the SolidWorks design using the Workgroup Manager. The bill of material no longer needs to be manually re-entered into another system, therefore reducing errors.

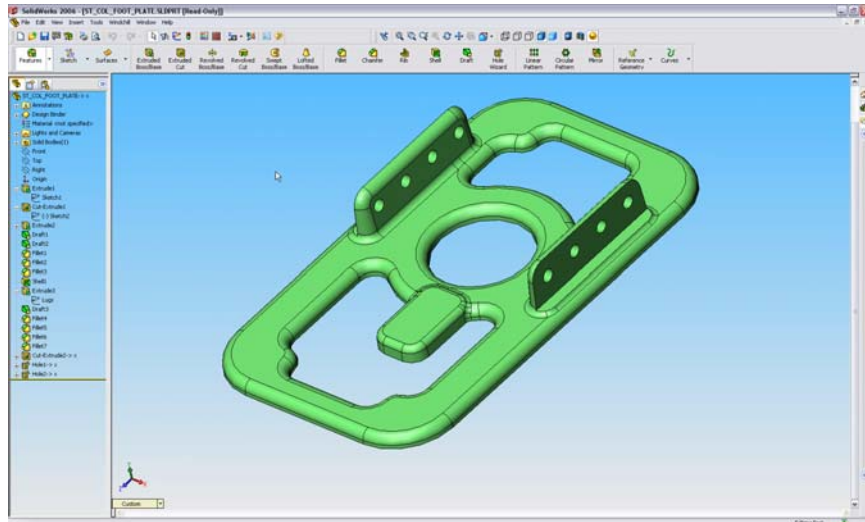
In addition to managing your native SolidWorks designs, Windchill supports managing other forms of electronic content. This content can be associated to your SolidWorks data, making it is easy to find other related information, such as analysis results, requirements documents, etc. The SolidWorks Workgroup Manager also facilitates the need to share and track data across CAD platforms. The workgroup manager can associate neutral files, such as IGES or STEP with the native CAD model and manage them together.

Windchill also supports business processes such as concurrent design, electronic change process and configuration management. Users can create baselines of their designs, retrieve those baselines, or choose to retrieve the latest version of the design.

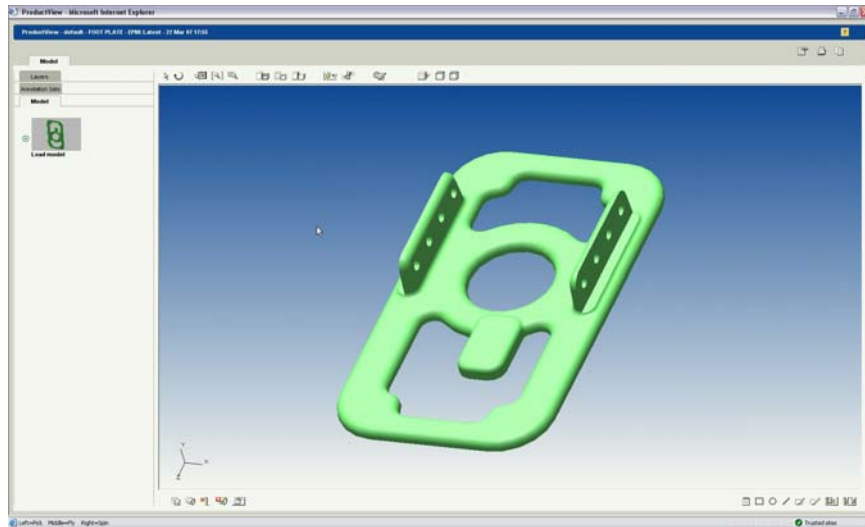


The workgroup manager supports a concurrent design process by providing the ability to update your work with the latest information that may have been checked in by other users.

Viewables of the SolidWorks designs can be created using the workgroup manager. Windchill provides visualization capabilities to everyone in the enterprise. Users do not need a license of SolidWorks to view the models and drawings. Using a Web Browser, any user can view and interrogate the SolidWorks design and markup the viewable to facilitate collaboration across the company.



Native Data in SolidWorks



Viewable of SolidWorks Data from Windchill

Currently, the workgroup manager supports SolidWorks version 2005 and 2006 on both Windows 2000 and Windows XP SP2.

The SolidWorks Workgroup Manager provides powerful capabilities to effectively manage your SolidWorks data. It extends the rich CAD content to the rest of the enterprise through visualization tools and allows access to accurate bill of materials that they may not have access to today. The SolidWorks workgroup manager is integrated directly inside of SolidWorks, so the user can continue to work in a familiar environment and still effectively manage their data within Windchill.

[Back To Top](#)

## Tips of the Month

### Creating Mirror Image Parts

[Click Here To View](#)

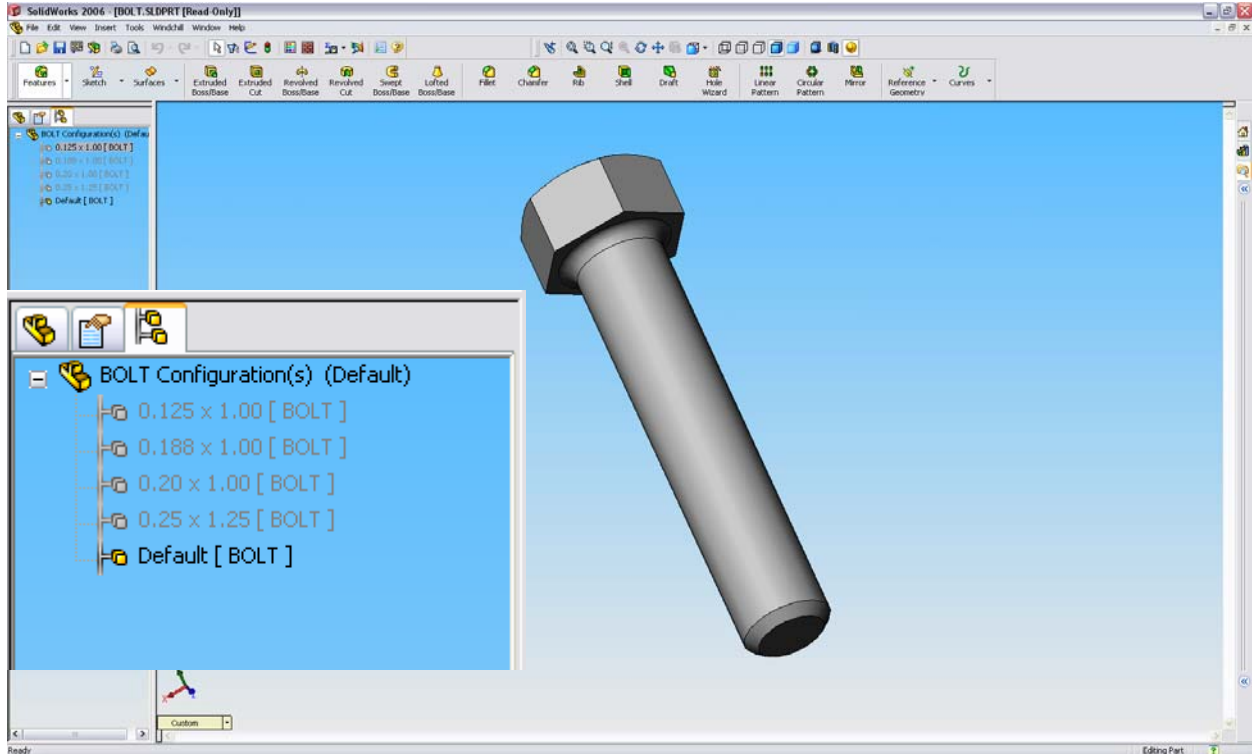
[Back To Top](#)

## Tips of the Month

### Managing Configurations from SolidWorks with Windchill

SolidWorks can create design configurations from a generic part or assembly to create a family of parts or assemblies. Each of these configurations can be managed independently within Windchill. This tip describes the process to select which configurations will be managed independently within Windchill.

Within SolidWorks, create a model with a few configurations. For this example we will use different configurations of a bolt. I have created a model of a bolt and created four (4) configuration of that bolt.



In order to manage any configuration as a unique part in Windchill, you can simply check in the design and all configurations will be created as its own part. There is a wtcad.ini configuration

setting to treat the “generic” configuration as non-functional, meaning this will not create a unique part in Windchill for the default configuration.

The setting is `default.configuration.name=Default`

If you do not want a specific configuration to be managed independently in Windchill, simply add the following property to the Configuration Specific tab for that configuration.

The property is `SP:ISFUNCTIONAL=false`

The screenshot shows the 'Configuration Specific' tab in the Summary Information window. It contains a table with the following data:

	Property Name	Type	Value / Text Expression	Evaluated Value
1	SP:ISFUNCTIONAL	Text	false	False
2	MATERIAL	Text	Steel	Steel

The workgroup manager will treat this as a “non-functional” configuration and not create a unique part for it in Windchill.

The family of parts is represented in Windchill as a table to identify the default configuration and the children configurations.

Details of BOLT.SLDPRT

**Organization ID:** CONSTRUCTION  
**Responsible Product:** [Third Party Design Data](#)  
**Number:** SW1013  
**Name:** BOLT  
**File Name:** BOLT.SLDPRT  
**Version:** 1.1  
**Instance Type:** Generic  
**General Status:** Checked in  
**Authoring Application:** SolidWorks  
**Location:** [/Third Party Design Data/SolidWorks Data](#)  
**Description:**

**Team Name:**  
**State:** Design - Prototype - Released - Obsolescence - Under Review

**Created:** 2007-03-22 16:49:31 GMT-04:0  
**Created By:** [James Design Engineer](#)  
**Updated By:** [James Design Engineer](#)  
**Last Updated:** 2007-03-22 16:49:32 GMT-04:0  
**Dependencies Complete?:** true

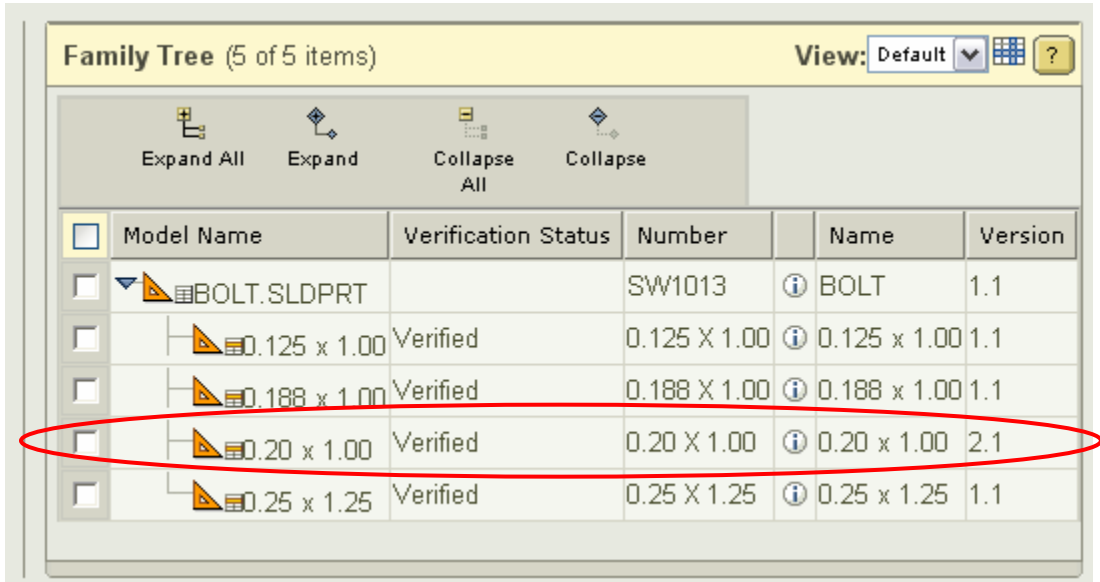
**Family Tree (5 of 5 items)**

Model Name	Verification Status	Number	Name	Version
BOLT.SLDPRT		SW1013	BOLT	1.1
0.125 x 1.00	Verified	0.125 X 1.00	0.125 x 1.00	1.1
0.188 x 1.00	Verified	0.188 X 1.00	0.188 x 1.00	1.1
0.20 x 1.00	Verified	0.20 X 1.00	0.20 x 1.00	1.1
0.25 x 1.25	Verified	0.25 X 1.25	0.25 x 1.25	1.1

Each of these configurations can be revised independently of one another. For the workgroup manager to be able to execute this revise operation on a specific configuration, you need to change the following `wcad.ini` setting.

`allow.selective.for.families=true`

After executing a revise action on one of the instances, the table show that the configuration is at a different version than the other configurations.



SolidWorks users may be accustomed to designing using specific capabilities in SolidWorks. Using configurations is one of those capabilities and Windchill's ability to understand and effectively manage configurations is critical. SolidWorks users do not need to change their modeling practices. Windchill is flexible enough to allow them to manage their design anyway they want to create them.

[Back To Top](#)

## Announcements

### Educational Resource Library

Learn things you always wanted to do - but didn't know you could.

This one stop educational resource library will help you learn more about PTC Solutions and provide you with technical materials developed by the product experts to help you become more productive.

Get tutorials, how-to videos and expert advice for:

- Pro/ENGINEER
  - Conceptual and Industrial Design
  - Detailed Design
  - Simulation/Analysis
  - Production
  - Design Collaboration
- Windchill PDMLink
- Windchill ProjectLink
- Pro/INTRALINK
- PTC Online Tools

Check out the [Educational Resource Library](#) today.

### PTC Tips & Techniques Newsletter Archives

Miss an issue! Can't find that awesome technique you read about? Fear not, you can click on the link below and go through our Customer PTC E-Newsletter archives.

[Click Here To Access](#)

It's better than finding the Covenant of the Ark!

### PTC Tips & Techniques Webcasts: Work Smarter. Not Harder.

Click below to see regularly scheduled Tips & Techniques technical Webcasts that are designed to provide you with the most popular time-saving tricks that Pro/ENGINEER users of all skill levels will find useful. Get more out of your maintenance dollars!

[Tips & Techniques: Work Smarter Not Harder!](#)

---

### **E-PROFILES IS HERE!!**

We have been eagerly anticipating the debut of the new electronic version of Profiles Magazine and now it is here! This new web site will supplement the print edition of the magazine and will

provide new useful features not feasible with paper media. e-Profiles will provide you with 24x7, worldwide access to key information previously available exclusively in the print version. "Tips & Tricks," a popular feature pioneered by Pro/USER, has also moved to the web and will be expanded as the site matures.

Please take a few minutes to check out this new web site. We don't think you will be disappointed.

<http://profilesmagazine.com/>

---

---

[Back To Top](#)



## Upcoming Events & Training Class Schedules

Upcoming, 2007                      Your local Pro/Engineer User Groups  
<http://www.ptcuser.org/rugs/>

June 3 - 6, 2007                      Tampa, Florida  
PTC/USER World Event  
<http://www.ptcuser.org/>

### Events

Our seminars and conferences seek to provide you with relevant information regarding product development trends in your industry as well as innovative software learning experiences. Think of them as a constructive day off where you can share experiences and swap ideas with your peers.

If you can't manage to get away, we'll bring it to you. Check back often for regularly scheduled live webcast events.

[You're Invited to Attend...](#)

Please visit the [PTC Education Services](#) website for the latest training information including course descriptions, schedules, locations, and pricing.

- Attend a course at any PTC Center and receive a **free** copy of Pro/ENGINEER Wildfire Student Edition!

<http://www.ptc.com/services/edserv/index.htm>

### Live Instructor-Lead Virtual PTC Training Courses

Virtual Classrooms provide interactive learning with a trained PTC instructor in convenient and manageable sessions that last approximately 4 hours over a series of days. It's easy to join a class right from your desk using a phone or voice-over IP technology.

Sessions are performed just like a traditional ILT (including interactive exercises where you and the instructor can work on lab exercises together) and feature some of our most popular ILT courses. These sessions cover the exact same material as the traditional ILT in-center courses. Also look for some of our most frequently requested mini-topics delivered in the same format that are only an hour - two hours in duration.

If you have any questions about these sessions or would like to see getting other courses, not on this list, on the schedule please feel free to contact me for more details. They are a great way to bring training to you without you having to worry about location or being out from work for long stretches.

You can register for these sessions just as you would for any normal ILT class either by:

1. calling order admin at <http://www.ptc.com/services/edserv/training/registra.htm> or
2. you can go to PTC University directly at <http://www.ptc.com/learning> and submit a registration request directly. All you have to do is search the catalog by typing in “virtual” in the search field and you will see a listing.

## PTC

**Note:** This PTC E-Newsletter will continue to be used for the following:

- 1) Inform you on events related to PTC products (user groups, conferences, training schedules, etc.)
- 2) Educate you on solutions that are available at PTC
- 3) Tips & Techniques using PTC Products

**Note:** These messages are compiled in the local PTC office and will be distributed via e-mail.

[Back To Top](#)