



new!

PTC Product Focus: A) [New Machining Capability – Pro/TOOLMAKER](#)

B) [SolidWorks Workgroup Manager](#)

new!

Tips of the Month: A) [Creating Mirror Image Parts](#)

B) [Managing Configurations from SolidWorks with Windchill](#)

Announcements: [Most Recent Announcements](#)

Upcoming Events & Training Schedule: [Events & Training Schedule](#)

PTC Product Focus

New Tool & Die Machining Capability – Pro/TOOLMAKER

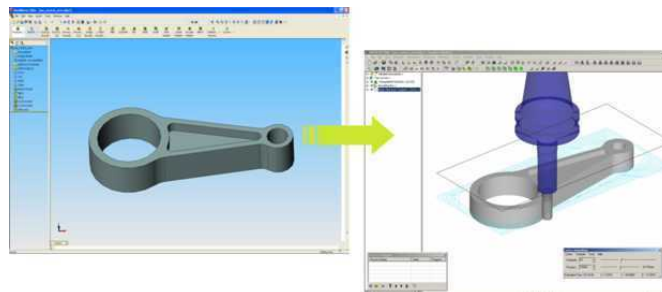
On May 2, 2007, PTC acquired privately held NC Graphics in Cambridge, England. NC Graphics specializes in the development and sales of computer-aided manufacturing solutions for high-speed milling and machining. NC Graphics solutions are optimized for ease of use and advanced machining routines that include roughing, rest milling and finishing, with full gauge protection for the tool and holder. These tools enable customers to quickly generate reliable NC machining toolpaths and create efficient toolpaths that extend tool life and reduce wear on machines.

NC Graphics' solutions complement Pro/ENGINEER design solutions and PTC's general purpose Pro/ENGINEER CAM solutions. The addition of the NC Graphics technology enables PTC to offer a complete, best-in-class design and machining solution for molds, dies, prototypes, and other high-speed, precision machining applications.

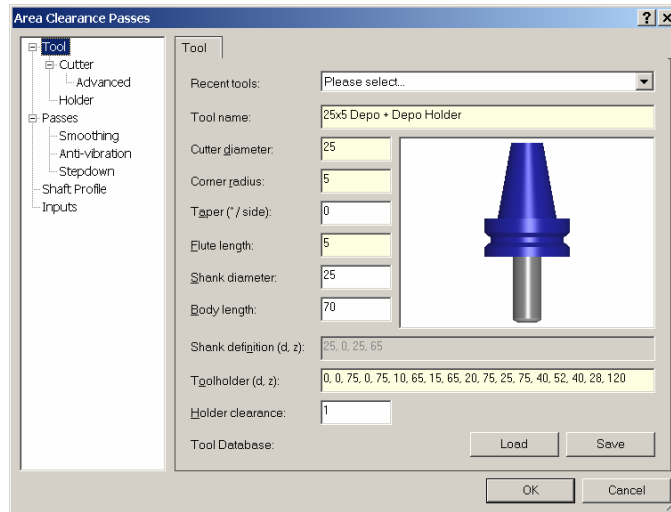
The initial product offering will be the Pro/TOOLMAKER module, providing a comprehensive and specialized programming solution for mold machining.

Pro/TOOLMAKER Key Capabilities

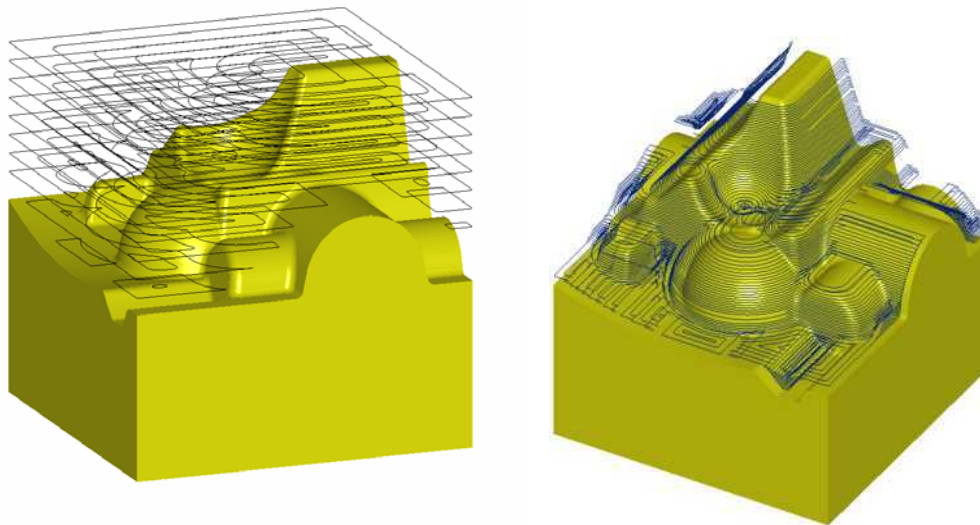
- Granite One Kernel – import and execution on native Pro/ENGINEER, and associative update to modified design models.



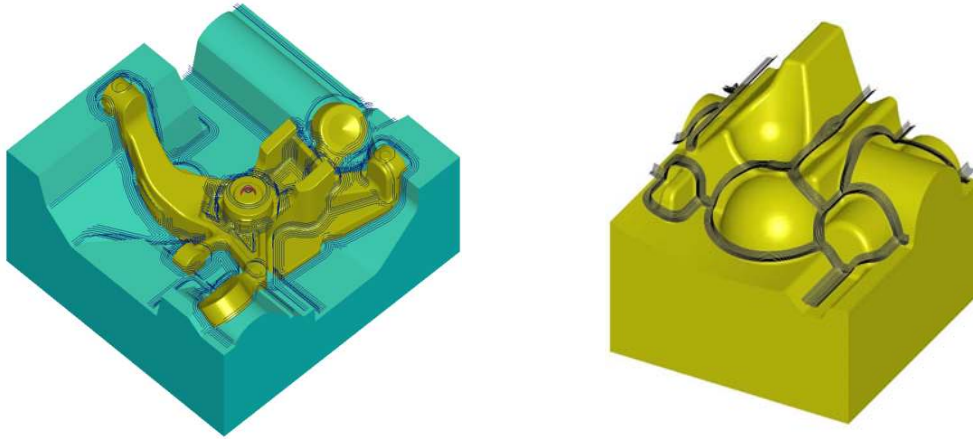
- Intelligent Dialog and Menus – Once the user has selected the cutter size, Pro/TOOLMAKER automatically sets the cutting parameters for all downstream dialogs, to produce exceptional high-speed toolpaths for machining steel.



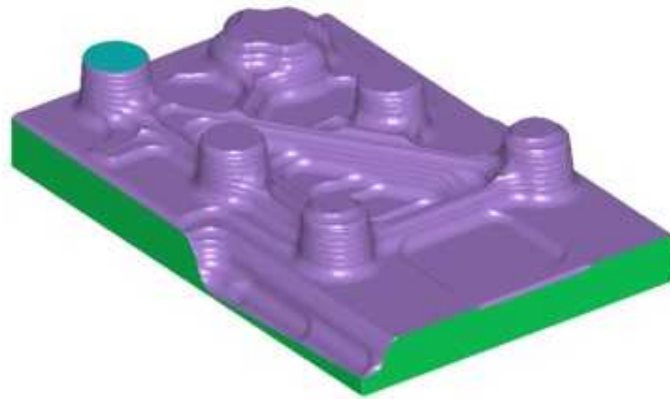
- Tooling Library – Pro/TOOLMAKER has a complete customizable tooling library, complete with tools and holders along with preset feeds and speeds.
- Specialized Core and Cavity Machining Strategies



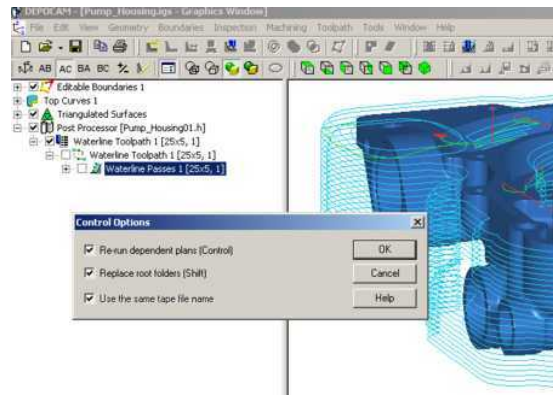
- Comprehensive Clean-up and Finish Strategies – rest machining options for all finishing routines that only machine the areas the previous cutter has not reached.



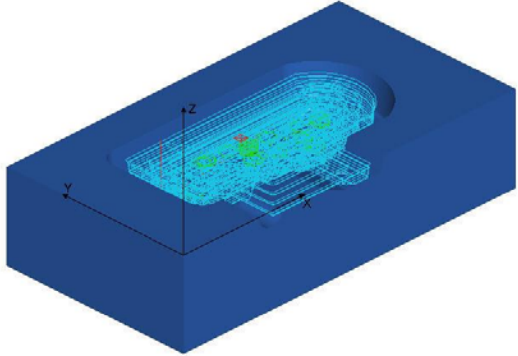
- Visualization and Animation – toolpaths can be displayed as stock model or animated in real time showing the true machining time.
- Stock Model Creation – resultant models can be created, displayed, and exported as needed.



- Full Macro Capability - All or part of the machining process can be stored as a macro, which can be applied to any model. The user can make any number of macros to suit different manufacturing applications, speeding up production time.



- Process Documentation – automatic creation XML-based shop floor documentation, completely user customizable.

		Area Clearance Toolpath 1 [15x3.5, 0.5]	Friday, May 11, 2007
Cutter diameter	Corner radius		
0.5906	0.1378		
Tool Name	15x3.5 Depo		
Tool Holder	Depo Holder		
Tool type	Toroidal		
Tool number	34		
Strategy	Area Clearance		
Body length	2.5591		
Taper Angle	0		
Thickness	0.0197		
Tolerance	0.0086		
Z clearance	0.2756		
Step over	0		
Step down	0.0459		
Spindle speed	3183		
Coolant	Off		
Rapid	393.7006		
Ramp down	35.2362		

Pro/TOOLMAKER Availability

We expect Pro/TOOLMAKER to be available later this year. To find the latest up to date information, please visit www.ptc.com.

[Back To Top](#)

PTC Product Focus

SolidWorks Workgroup Manager

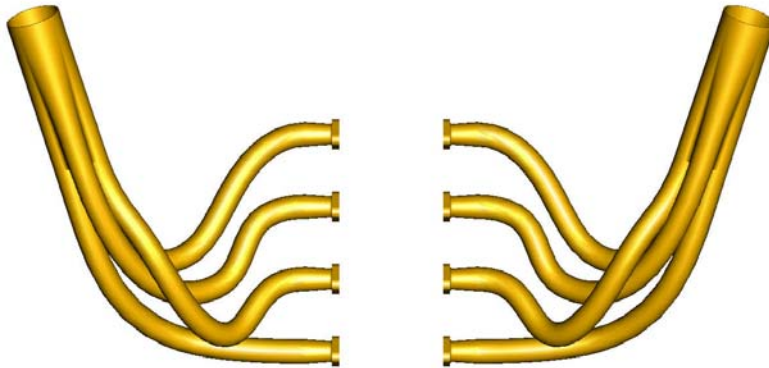
[Click Here To View](#)

[Back To Top](#)

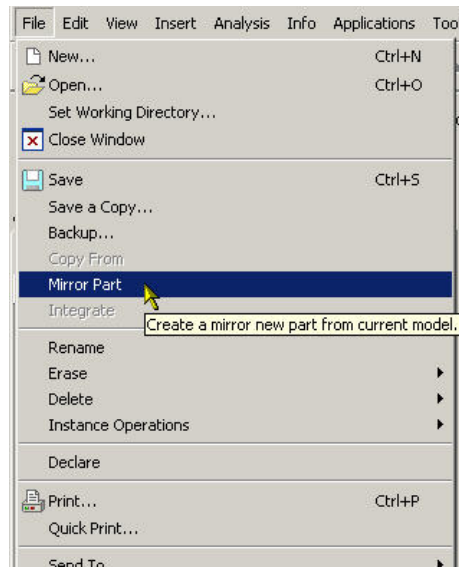
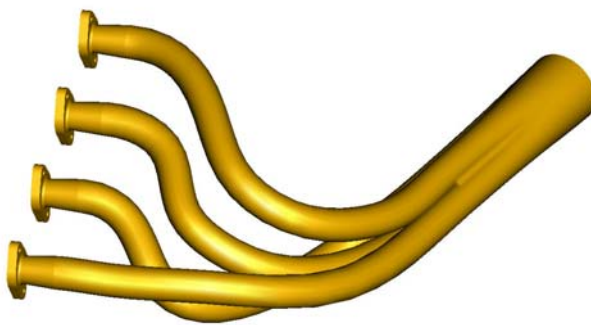
Tips of the Month

Creating Mirror Image Parts

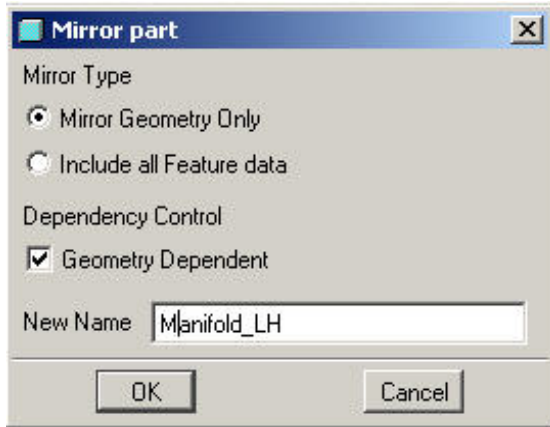
Pro/ENGINEER allows for the immediate creation of mirror image parts. These parts, often found in a number of industries including automotive, aerospace, and consumer products, have products that are either exact mirror images or they may be similar with detail differences. One example could be exhaust manifolds for multiple-bank engines such as V-8's.



With one part created, simply use the Mirror Part command. From the menus, select **File/Mirror Part**.



This brings up the Mirror Part menu:

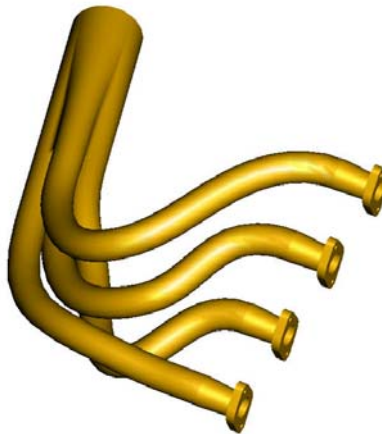


Options include:

Mirror Type – this option gives you the option **Mirror Geometry Only**, resulting in a single part feature that is the mirror image of the initial complete part, or you can select to **Include all Feature Data**, which creates a new mirror image part with all dimensions and features accessible for modification or suppression.

Dependency Control – When **Mirror Geometry Only** is selected, the user has the additional option of choosing whether the mirror part is dependent on the original model (dimensional changes in the original are reflected in the mirror part). Deselecting this option creates a one-time generation of the mirror image part with no future updates.

Enter the new model name, and the new model is created. From there any additional features can be added to the mirror image. Simple but effective.



[Back To Top](#)

Tips of the Month

Managing Configurations from SolidWorks with Windchill

[Click Here To View](#)

[Back To Top](#)

Announcements

Educational Resource Library

Learn things you always wanted to do - but didn't know you could.

This one stop educational resource library will help you learn more about PTC Solutions and provide you with technical materials developed by the product experts to help you become more productive.

Get tutorials, how-to videos and expert advice for:

- Pro/ENGINEER
 - Conceptual and Industrial Design
 - Detailed Design
 - Simulation/Analysis
 - Production
 - Design Collaboration
- Windchill PDMLink
- Windchill ProjectLink
- Pro/INTRALINK
- PTC Online Tools

Check out the [Educational Resource Library](#) today.

PTC Tips & Techniques Newsletter Archives

Miss an issue! Can't find that awesome technique you read about? Fear not, you can click on the link below and go through our Customer PTC E-Newsletter archives.

[Click Here To Access](#)

It's better than finding the Covenant of the Ark!

PTC Tips & Techniques Webcasts: Work Smarter. Not Harder.

Click below to see regularly scheduled Tips & Techniques technical Webcasts that are designed to provide you with the most popular time-saving tricks that Pro/ENGINEER users of all skill levels will find useful. Get more out of your maintenance dollars!

[Tips & Techniques: Work Smarter Not Harder!](#)

E-PROFILES IS HERE!!

We have been eagerly anticipating the debut of the new electronic version of Profiles Magazine and now it is here! This new web site will supplement the print edition of the magazine and will

provide new useful features not feasible with paper media. e-Profiles will provide you with 24x7, worldwide access to key information previously available exclusively in the print version. "Tips & Tricks," a popular feature pioneered by Pro/USER, has also moved to the web and will be expanded as the site matures.

Please take a few minutes to check out this new web site. We don't think you will be disappointed.

<http://profilesmagazine.com/>

[Back To Top](#)

Upcoming Events & Training Class Schedules

Upcoming, 2007 Your local Pro/Engineer User Groups
<http://www.ptcuser.org/rugs/>

June 3 - 6, 2007 Tampa, Florida
PTC/USER World Event
<http://www.ptcuser.org/>

Events

Our seminars and conferences seek to provide you with relevant information regarding product development trends in your industry as well as innovative software learning experiences. Think of them as a constructive day off where you can share experiences and swap ideas with your peers.

If you can't manage to get away, we'll bring it to you. Check back often for regularly scheduled live webcast events.

[You're Invited to Attend...](#)

Please visit the [PTC Education Services](#) website for the latest training information including course descriptions, schedules, locations, and pricing.

- Attend a course at any PTC Center and receive a **free** copy of Pro/ENGINEER Wildfire Student Edition!

<http://www.ptc.com/services/edserv/index.htm>

Live Instructor-Lead Virtual PTC Training Courses

Virtual Classrooms provide interactive learning with a trained PTC instructor in convenient and manageable sessions that last approximately 4 hours over a series of days. It's easy to join a class right from your desk using a phone or voice-over IP technology.

Sessions are performed just like a traditional ILT (including interactive exercises where you and the instructor can work on lab exercises together) and feature some of our most popular ILT courses. These sessions cover the exact same material as the traditional ILT in-center courses. Also look for some of our most frequently requested mini-topics delivered in the same format that are only an hour - two hours in duration.

If you have any questions about these sessions or would like to see getting other courses, not on this list, on the schedule please feel free to contact me for more details. They are a great way to bring training to you without you having to worry about location or being out from work for long stretches.

You can register for these sessions just as you would for any normal ILT class either by:

1. calling order admin at <http://www.ptc.com/services/edserv/training/registra.htm> or
2. you can go to PTC University directly at <http://www.ptc.com/learning> and submit a registration request directly. All you have to do is search the catalog by typing in “virtual” in the search field and you will see a listing.

PTC

Note: This PTC E-Newsletter will continue to be used for the following:

- 1) Inform you on events related to PTC products (user groups, conferences, training schedules, etc.)
- 2) Educate you on solutions that are available at PTC
- 3) Tips & Techniques using PTC Products

Note: These messages are compiled in the local PTC office and will be distributed via e-mail.

[Back To Top](#)