



PTC Email Newsletter

February 18th, 2002

PTC Product Focus: PTC PartsLink

Tip of the Week: License Simplification

Upcoming Events and Training Class Schedules

PTC Product Focus: PTC PartsLink

The ability to make your products and services accessible via the Internet represents the foundation of business-to-business (B2B) e-commerce. For manufacturing companies that supply components to industrial buyers, the biggest payoff comes when their products get engineered directly into the customer's product design. In order to achieve such an early-stage design win, companies need to make rich product information easily available to their customers. Such information goes beyond detailed product specifications and attributes to encompass value-added content such as 2D and 3D CAD drawings and models or electronic symbols.

It is not enough to simply publish technical content. Suppliers today must effectively distribute their technical data in a way that increases sales while minimizing the risk to their proprietary information. This is a difficult challenge. First, this technical information represents significant intellectual property that must be protected from easy access by competitors. Second, uncontrolled information sharing through content intermediaries like aggregators or exchanges often focuses buyers on lowest price only. Suppliers, therefore, must strike the right balance between sharing and controlling their product-related intellectual property. Here, success depends on the supplier's ability to deliver personalized views of product data in a secure context.

With PartsLink, PTC is helping manufacturers leverage their technical content to gain competitive advantage. PartsLink enables manufacturers to publish product content, including rich technical data such as CAD models, and other technical specifications directly from the product development process to their corporate Web sites and to other locations across the Internet. The powerful publication and search capabilities of PTC PartsLink together with unrivalled support for the distribution of customer-specific rich technical data including CAD make the PTC PartsLink solution the industry's first truly Interactive Product Catalog.

"Not only is doing business with Bourns easier and faster, the efficiency of the Windchill PartsLink technology means we expect to improve our offerings while reducing costs. We are now able to meet the demands of trading partners who want to handle transactions via RosettaNet's PIP2A9."

- Gerry Young, Bourns, Inc.

PTC PartsLink customer

See their PartsLink site at: www.bourns.com

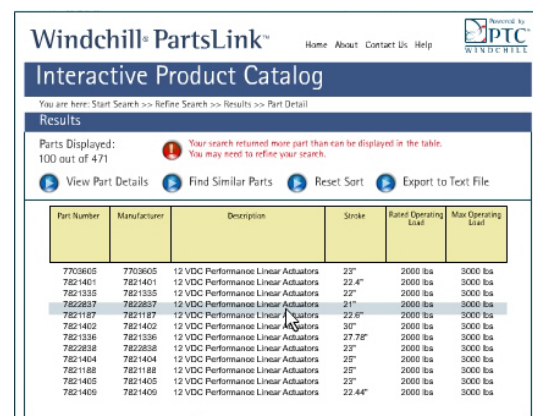
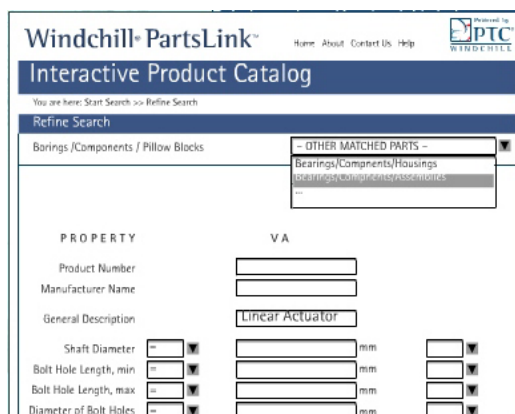
PTC PartsLink Capabilities

- PartsLink has the ability to serve dynamic, 3D CAD information directly to customers, in multiple formats. PartsLink will generate in real time, native Pro/ENGINEER and CAD-neutral models (2D DXF, STEP, IGES) for catalog items. It can also dynamically apply "Shrinkwrap" to models for protection of engineering intellectual property and publish a full line of CAD models and formats, based on product generics managed by the model server.

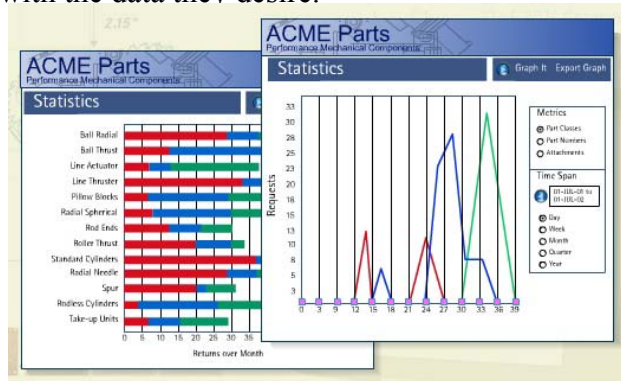


*"By the end of 2004, 70% of all discrete manufacturing enterprises will expect their suppliers to support 3D CAD-based product catalogs as a prerequisite for partnership."
- Marc Halpern, Gartner Group*

- PartsLink has the ability to support entitlements based Web publishing, allowing strategic customers technical or product line information that other customers might not be entitled to. This both protects your proprietary data and allows you to control how your product is represented.
- PartsLink also provides powerful search capability to find products. (parametric, natural language, part number, etc.) The PTC PartsLink search engine rivals the speed of almost any other search tool today.



- Statistics reporting tools are also standard to PartsLink. They track what products customers are searching for, interested in, and downloading. This data can then be used to track buying trends and provide customers with the data they desire.



- PartsLink provides the ability to syndicate part content in XML to exchanges and customers.
- PartsLink provides powerful tools for cleansing, normalizing, and managing part information such as ModelCHECK to ensure model quality.
- PartsLink provides rich, customizable classification structures designed to support future additions to the catalog, including both parts and product lines.

PTC PartsLink Benefits

- Improves customer satisfaction and retention
- Provides an unprecedented level of customer service by bringing rich technical content to the design engineer's desktop
- Captures the critical design win up front
- Allows better understanding of your customers' requirements and behavior
- Accelerates time to market for you and your customers
- Provides a low-cost, low-maintenance distribution channel



Tip of the Week: **License Simplification**

Overview

Over the past two years PTC has focused a concerted effort on improving both our customer service and technical support. In most cases, customer input and requests have provided the impetus for the variety of changes at PTC. As part of this ongoing effort, PTC has committed to addressing a common customer request by simplifying the licensing scheme for our MCAD product lines. Specifically, we plan to increase the customer's flexibility to configure their licenses while also minimizing the number of Config IDs generated for a customer. The following information will detail how a customer can take advantage of this offering.

Objective

The objective of License Simplification focuses on improving customer satisfaction through easier license configuration, installation and tracking processes. PTC foresees the following benefits to this simplification:

1. Increase our customers flexibility to manage PTC licenses. Customers can alter the assignment and configuration of functions without contacting PTC.
2. Removes a majority of the licensing rules which prevented flexibility.
3. With the elimination of the licensing requirements on Config IDs, each customer will have significantly fewer Config IDs to manage. (Expected 2/3 reduction in Config IDs)
4. Customers and PTC will no longer need to research and maintain the tight control on the multiple flavors of licenses based on how the products were originally purchased.
5. Reduce System Administration time for license changes.
6. Improves license tracking process.

Details About License Simplification

In it's most basic sense, License Simplification allows all Pro/ENGINEER licenses and options to be combined onto a single Config ID and assigned through this one entity to the desired license server. As other products become available such as Pro/INTRALINK and Pro/MECHANICA, these can be added to this single Config ID. License Simplification provides the following main changes to the licensing scheme:

1. Moves the license configuration from licensing process to installation process.
 - Specifically, each purchased item will be listed within the license file as a separate feature thus allowing the customer to group licenses during installation.

2. Assigns all products to a machine through a single “Config ID”.
 - Many of the traditional licensing restrictions that forced similar products to be defined on separate Config IDs have been removed. The Config ID becomes reduced to a mechanism to assigning products to a license server and remains the entitlement number for accessing technical support and the PTC Web Support and tools.
3. Uses common “Feature Names” in licenses.
 - With each purchased item being uniquely defined in the license file, products will be defined with a consistent feature name. This format follows a more standard approach to using FLEXlm and allows floating options to be initiated with a base license during start-up.

Procedure

This licensing change is currently voluntary. To take advantage of this offering it is suggested that you follow the steps as specified below.

Step 1

Review the [License Simplification Frequently Asked Questions Page](#) on PTC.com. A thorough reading of this document should provide you with all you need to know regarding the change over.

NOTE: This licensing scheme can only be utilized after updating to Pro/ENGINEER build 2001440 or later. It is NOT downward compatible with earlier versions. FLEXlm must also be updated to FLEXlm 7.2 which is available on the Pro/ENGINEER CD. To order the latest CD [Click HERE](#).

Step 2

Utilize the [Merge Config-IDs Web Tool](#) on PTC.com to enact the license simplification. The web tool automatically consolidates the licenses onto a selected Config ID and returns an updated license file within minutes.

Step 3

During a designated update period, ensure all users are off the system and update your FLEXlm 7.2 install with the new license file. To utilize the new license setup properly the users install locations must now be updated utilizing PTC.setup. To access the installation procedure for simplified license environment, go to PTC.com.

[Windows 2000/NT \(Intel\)](#) [UNIX](#)

For existing installs you will need to use PTC.setup to modify your Pro/ENGINEER session. Use a command prompt to launch PTC.setup (found in the loadpoint/bin directory) using the option “-simplify proe” as a command line argument to get the proper interface of PTC.setup. For example, “setup.exe –simplify proe”

Most of the interface will be standard, the changes will appear when you begin to specify the startup commands. Here you will specify new startup commands for Pro/E that will be based on the desired functionality rather than a preassigned Config ID. The following dialog box shows the change:

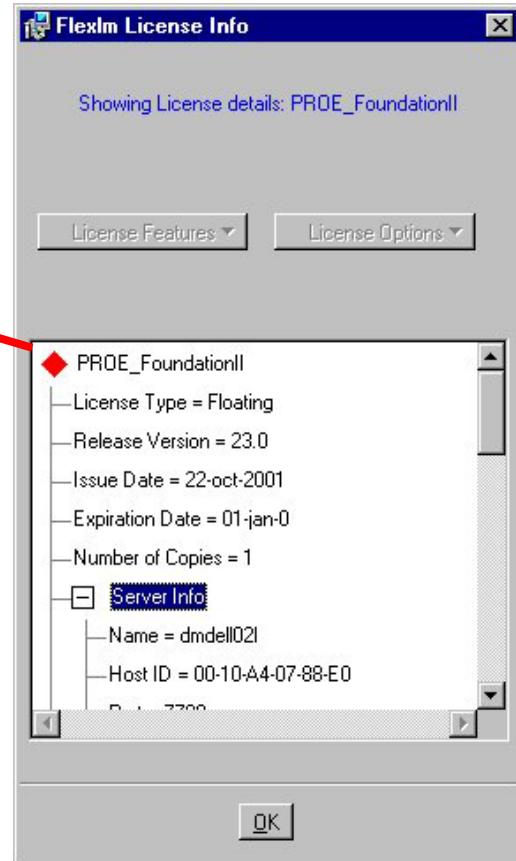
Select the license to run, by it's Pro/E package name not configID. Then add extensions and options to it if they are available.

NOTE: the radio will be grayed out if you attempt to edit an existing command; it is only available for new commands. New functionality under LS includes the ability to add the STARTUP variety of floating options or bundles, called **License Extensions**, to the startup command. Regular floating options and bundles, called **Floating Options**, can also be added.

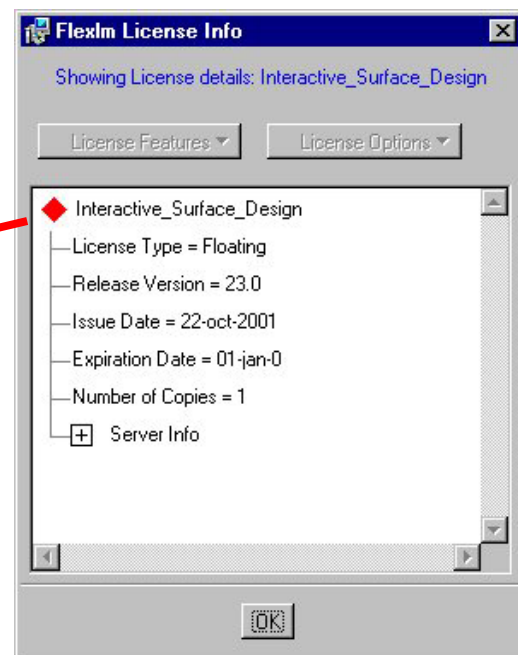
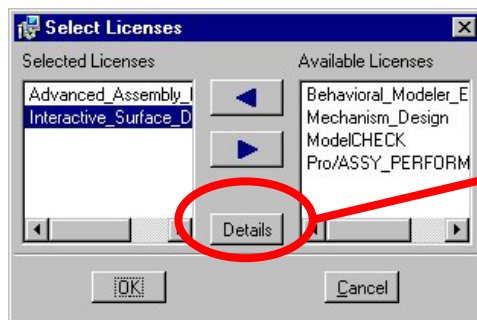
The user then has the ability to select the desired functionality to attach to the startup command based off the package name (e.g. Foundation II) and attach License Extensions or Floating Options to be gained during startup. This change will complete the License Simplification process.



Select the Functionality by Name



Then Add Extensions or Floating Options as Needed



Do I have to change to the License Simplification scheme?

Due to the significant customer benefits with the License Simplification scheme, PTC encourages all customers to quickly update to the latest version of software and convert to the new license process. However, this is not a requirement and customers can use the traditional license scheme with Pro/ENGINEER Release 2001. Please note - future versions of Pro/ENGINEER may only be provided in the License Simplification format.

Additional Information

[More Information on PTC PartsLink](#)

www.bourns.com - PTC PartsLink Customer Site

[PTC.com License Simplification Page](#)

Upcoming Events and Training Class Schedules

Training Classes: Please visit the PTC Website for the latest training class schedule and locations.

[Click here for Training Classes](#)
