



PTC Product Focus: A) [Create Technical Illustrations Faster with Arbortext IsoDraw](#)

B) [Windchill RequirementsLink](#)

Tips of the Month: A) [Grab Bag of Helpful Tips for Pro/NC, Pro/ENGINEERS's Integrated CAM](#)

B) [WTPart View Cleanser Administration Utility](#)

Announcements: [Most Recent Announcements](#)

Upcoming Events & Training Schedule: [Events & Training Schedule](#)

PTC Product Focus

Create Technical Illustrations Faster with Arbortext IsoDraw

[Click Here To View](#)

[Back To Top](#)

PTC Product Focus

Windchill RequirementsLink

Expand the power of Windchill to manage, track and cross-reference product requirements as part of the overall product development process.

Insufficient visibility to requirements during the development process increases the chances of product failure in the marketplace. Many times this is because requirements are not well connected with product design data nor are they easily accessible by the entire product development team. This makes it difficult to determine whether requirements are satisfied by underlying product designs, whether design changes will impact requirements or understand how requirement changes impact designs, schedule and cost.

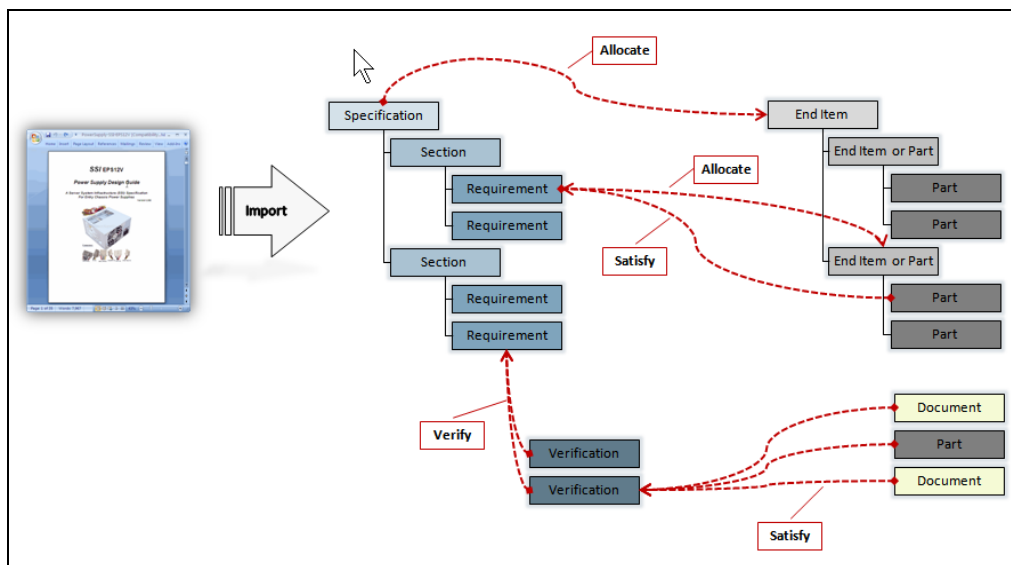
Windchill RequirementsLink – an integral option for Windchill PDMLink – lets you expand the powerful capabilities of Windchill to include the management of product requirements including change control and associating requirements with specific product structures and design content. By establishing bi-directional traceability between customer needs, market requirements and the underlying technical requirements, Windchill RequirementsLink helps ensure that customer and

market requirements have been satisfied by designs and have been properly verified during development.

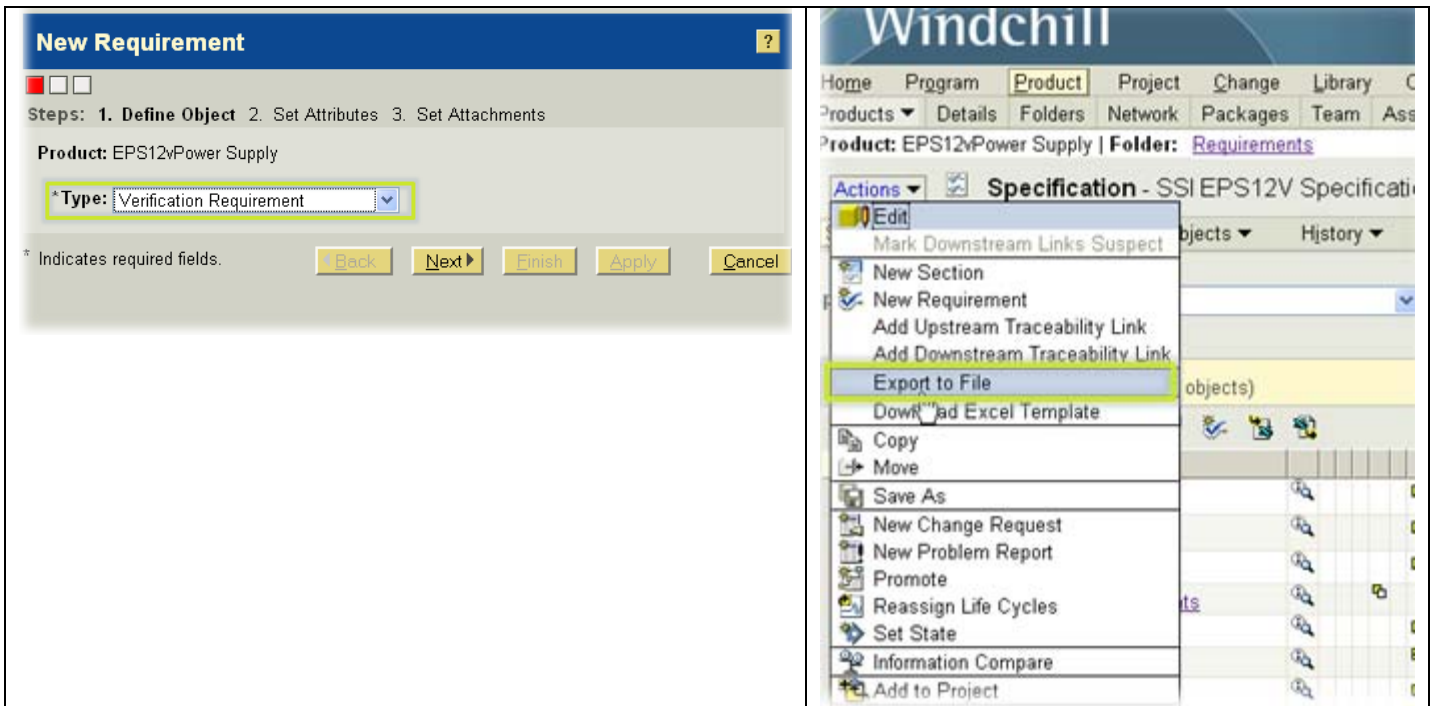
Windchill RequirementsLink connects requirements to specifications and parts - this provides the ability to assess the impact of change with requirements in mind: when making a change, you have instant access to all the product requirements that are driving the part and know if this change invalidates specific customer requirements. Similarly, when editing requirements, you can easily identify which product designs are impacted by the change and better equipped to consistently meet customer needs and design standards in your product development process.

Key Capabilities:

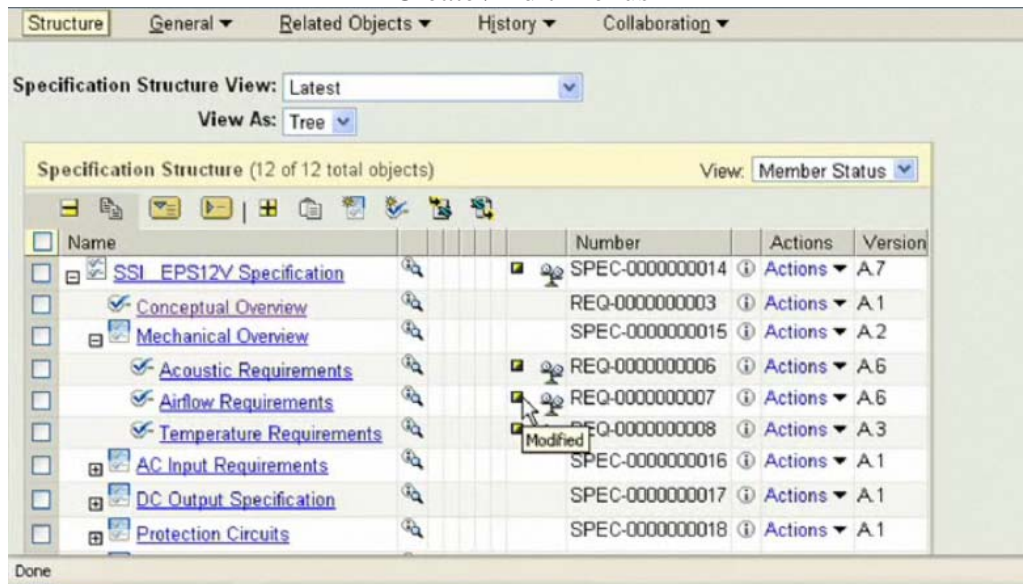
- Control requirements and make them visible to your team in a cost effective way.
- Trace requirements through multiple levels.
- Collaborate when developing requirements
- Leverage Windchill PDMLink capabilities such as lifecycle, workflow and baseline.
- Trace requirements from product structure.
- Trace parts from requirements structure
- Report on verification status, orphaned requirements, compare baselines.
- Export requirements to HTML/PDF.



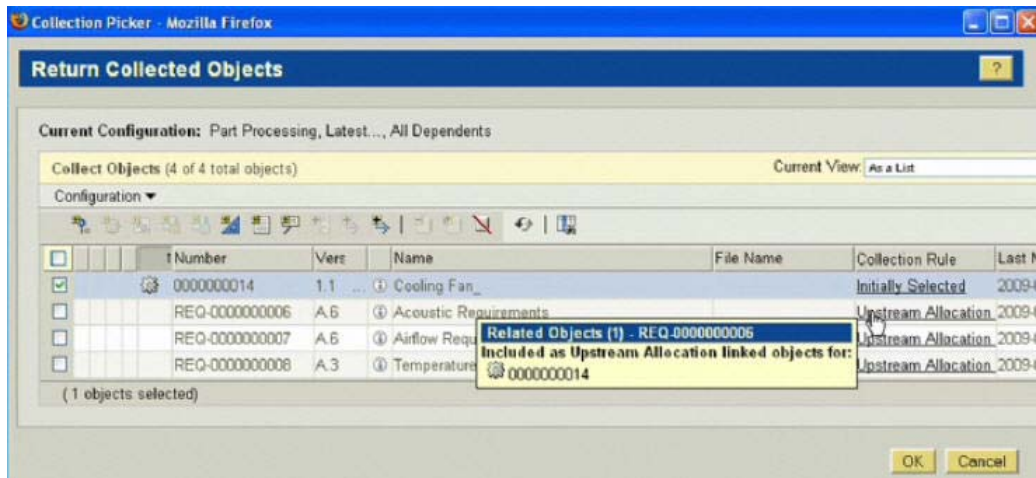
Conceptual Overview



Create / Edit Menus



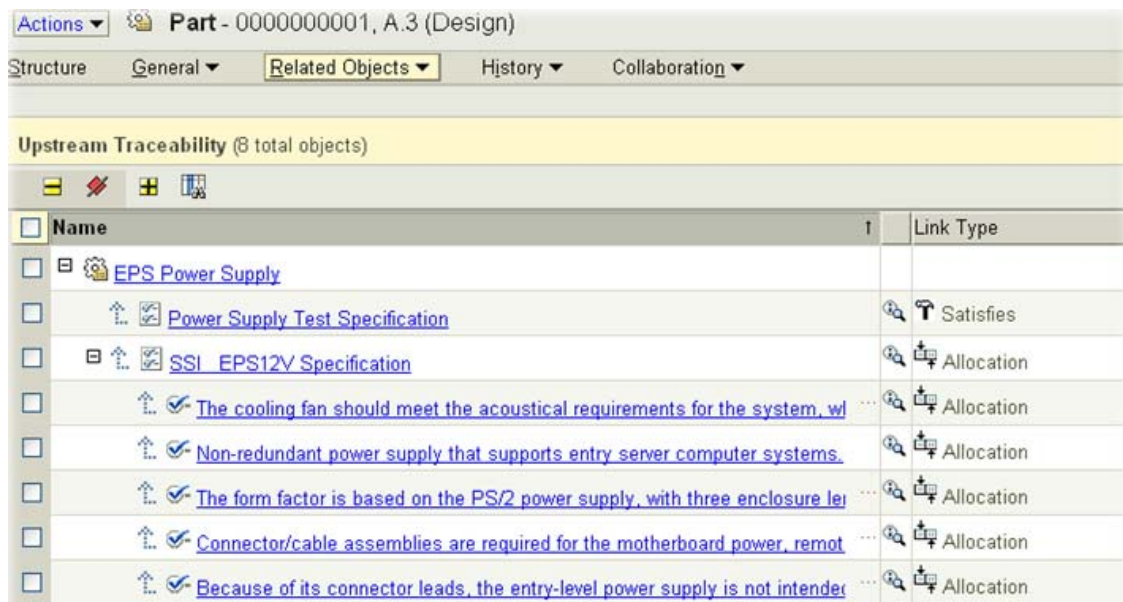
Specification Structure



Change Request Form: Finding upstream linked Requirements.

From a traceability perspective, RequirementsLink enables you to trace through multiple levels of product requirements directly to the design that implements those requirements. For example, you may start with a customer-level requirement from which you might derive systems / subsystems requirements which will be ultimately connected to a part.

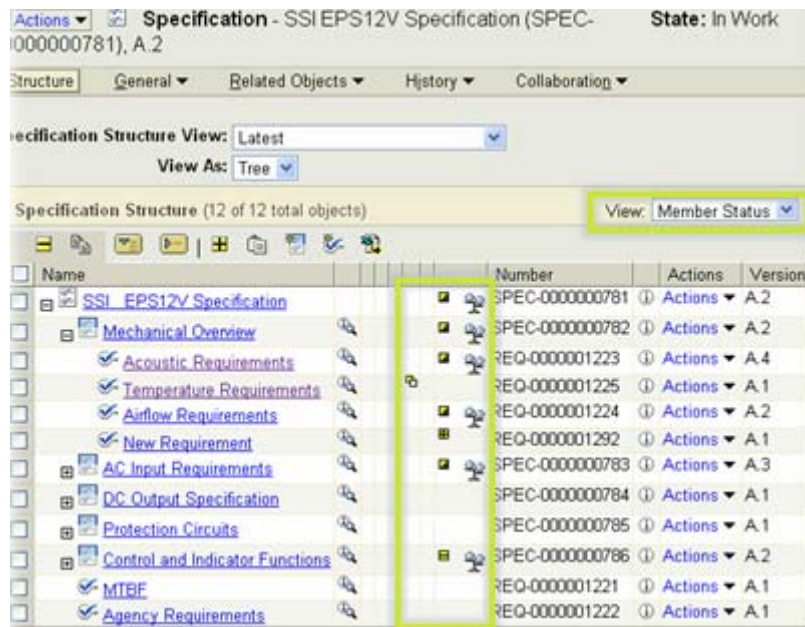
You can attach reference information as you collect requirements so that all the background information is available to engineers and designers during implementation.



Requirements traceability

RequirementsLink has built-in support for verification of requirements. For example, when developing your functional requirements, you are able to determine which need to be verified. Reports allow program managers to find requirements don't have a verification method associated.

There is built in support for verification requirements that document how a functional requirement will be tested and these are linked directly to downstream documents such as test procedures, test results and the product configurations used in the tests – This is closed loop requirements verification.



Shows which requirements changed since last baseline

RequirementsLink has built-in support for Microsoft Excel® users and enables much better controlled collaboration during the definition of requirements.

There are two license types: Windchill RequirementsLink Author with or without Microsoft Word Import. The only difference in capabilities between these two licenses is the ability to import requirements that were created in Microsoft Word.

Key Benefits

- Improve productivity and efficiency
- Facilitate collaboration and improve communication
- Reduce the cost of change
- Accelerate time-to-market

For more information, please visit the [Windchill RequirementsLink](#) page on ptc.com

[Back To Top](#)

Tips of the Month

Grab Bag of Helpful Tips for Pro/NC, Pro/ENGINEERS's Integrated CAM

[Click Here To View](#)

[Back To Top](#)

Tips of the Month

WTPart View Cleanser Administration Utility

In early Windchill PDMLink releases, users may have created some WTPart objects without an assigned View (parts with a null view) or with more recent releases, a small set of parts might have been created with an incorrect view, for example Manufacturing instead of Design.

Starting with PDMLink 9.0 M040, a repair utility became available to allow administrators to reassign the view of existing parts. As usual, before using any such utilities, a system backup is required. It is strongly recommended that any of these commands be tested in a controlled test environment to ensure that they are functioning as desired before executing them in a production.

TAN 142284 - Change the view of all part iterations to a specific value.
<https://www.ptc.com/appserver/cs/view/solution.jsp?n=142284>

Note: the command line utility does not iterate parts.

```
java wt.vc.views.ReassignSingleViewCleanser -help
```

Command to change null-view parts to a Design view. Verbose option is used to investigate the output to make sure that the correct objects will be updated. Use -update to commit changes.
java wt.vc.views.ReassignSingleViewCleanser -org Demo -targetview Design -verbose

To change parts inadvertently created with a Manufacturing view to a Design view.
wt.vc.views.ReassignSingleViewCleanser -org Demo -sourceview Manufacturing -targetview Design

[Back To Top](#)

Announcements

PTC Tips & Techniques Newsletter Archives

Did you miss an issue? Can't find that awesome technique you read about? Fear not, you can click on the link below and go through our Customer PTC E-Newsletter archives.

[Customer Care Zone](#)

PTC Tips & Techniques Webcasts: Work Smarter. Not Harder.

Click below to see regularly scheduled Tips & Techniques technical Webcasts that are designed to provide you with the most popular time-saving tricks that Pro/ENGINEER users of all skill levels will find useful. Get more out of your maintenance dollars!

[Tips & Techniques: Work Smarter Not Harder!](#)

Special Hardware offers for PTC Customers

- <http://www.hp.com/go/ptc>
- <http://www.hp.com/go/ptcworkstation>

PTC Sponsored Events

- <http://www.ptc.com/company/news/events/index.htm>

Explore what is new with the Pro/ENGINEER Wildfire family!

<http://www.ptc.com/go/showcase>

Connect with PTC using the latest Social Networking resources:

facebook



LinkedIn

YouTube

Also visit <http://social-product-development.blogspot.com/>

E-PROFILES IS HERE!!

We have been eagerly anticipating the debut of the new electronic version of Profiles Magazine and now it is here! This new web site will supplement the print edition of the magazine and will provide new useful features not feasible with paper media. e-Profiles will provide you with 24x7, worldwide access to key information previously available exclusively in the print version. "Tips & Tricks," a popular feature pioneered by Pro/USER, has also moved to the web and will be expanded as the site matures.

Please take a few minutes to check out this new web site. We don't think you will be disappointed.

<http://profilesmagazine.com/>



[Back To Top](#)

Upcoming Events & Training Class Schedules

Upcoming, 2009 Your local Pro/Engineer User Groups
<http://www.ptcuser.org/rugs/>

June 6 – 9, 2010 Orlando, FL USA
PTC/USER World Event
<http://www.ptcuser.org/>

Events

Our seminars and conferences seek to provide you with relevant information regarding product development trends in your industry as well as innovative software learning experiences. Think of them as a constructive day off where you can share experiences and swap ideas with your peers.

If you can't manage to get away, we'll bring it to you. Check back often for regularly scheduled live webcast events.

[You're Invited to Attend...](#)

Please visit the [PTC Education Services](#) website for the latest training information including course descriptions, schedules, locations, and pricing.

- Attend a course at any PTC Center and receive a **free** copy of Pro/ENGINEER Wildfire Student Edition!

<http://www.ptc.com/services/edserv/index.htm>

Live Instructor-Lead Virtual PTC Training Courses

Virtual Classrooms provide interactive learning with a trained PTC instructor in convenient and manageable sessions that last approximately 4 hours over a series of days. It's easy to join a class right from your desk using a phone or voice-over IP technology.

Sessions are performed just like a traditional ILT (including interactive exercises where you and the instructor can work on lab exercises together) and feature some of our most popular ILT courses. These sessions cover the exact same material as the traditional ILT in-center courses. Also look for some of our most frequently requested mini-topics delivered in the same format that are only an hour - two hours in duration.

If you have any questions about these sessions or would like to see getting other courses, not on this list, on the schedule please feel free to contact me for more details. They are a great way to bring training to you without you having to worry about location or being out from work for long stretches.

You can register for these sessions just as you would for any normal ILT class either by:

1. calling order admin at <http://www.ptc.com/services/edserv/training/registra.htm> or
2. you can go to PTC University directly at <http://www.ptc.com/learning> and submit a registration request directly. All you have to do is search the catalog by typing in “virtual” in the search field and you will see a listing.

PTC

Note: This PTC E-Newsletter will continue to be used for the following:

- 1) Inform you on events related to PTC products (user groups, conferences, training schedules, etc.)
- 2) Educate you on solutions that are available at PTC
- 3) Tips & Techniques using PTC Products

Note: These messages are compiled in the local PTC office and will be distributed via e-mail.

[Back To Top](#)