



PTC Product Focus: A) [Pro/ENGINEER Interactive Surface Design Extension \(ISDX\)](#)

B) [Windchill Translation Management Library](#)

Tips of the Month: A) [Surfacing Tips](#)

B) [Boxing Paragraphs in Arbortext](#)

Announcements: [Most Recent Announcements](#)

Upcoming Events & Training Schedule: [Events & Training Schedule](#)

PTC Product Focus

Pro/ENGINEER Interactive Surface Design Extension (ISDX)

[Click Here To View](#)

[Back To Top](#)

PTC Product Focus

Windchill Translation Management Library

For most companies, localization costs consume a significant portion of the technical publications expense, and typically amount to 2% to 5% of the overall R&D cost. While it is necessary to produce localized content in order to compete globally, a significant portion of the cost and time required to translate product information can be eliminated. For many companies, this can mean savings of millions of dollars.

After successfully enabling many of our customers to reduce translation and labor costs associated with localizing product information, a solution has been developed as a Global Services offering and is available for deployment. The official name for the translation management solution is Translation Management Library.

Translation Management Library

The Translation Management Library provides translation process management and automation to Windchill. The Translation Management Library works in concert with the Arbortext DITA or

SMA application, to provide a topic based environment for creating and publishing content that also needs to be translated.

Definitions

Localization - is the process of adapting a product or service to a particular language, culture, and desired local “look-and-feel”.

Translation - is the act of converting information from one language to another language, without any loss or alteration of meaning (ie, the actual conversion of the content from a source language to one or many additional languages).

Translation memory, or **TM**, is a type of database that is used in software programs designed to aid human translators. A translation memory consists of text segments in a source language and their translations into one or more target languages. These segments can be blocks, paragraphs, sentences, or phrases.

Localization Service Provider (LSP) – translates text and graphical content from language to another.

Translation Management Library - Capabilities

Create Translation Package

- Identify and collect new source objects or objects that have changed
- Define Languages
- Create Localized document structure from Master structure for each language
 - Create object references between Master and Localized Documents

Export Translation Package

- Export files
 - Localized Objects for Translation
 - Reference Material
- Create zip file for delivery to LSP

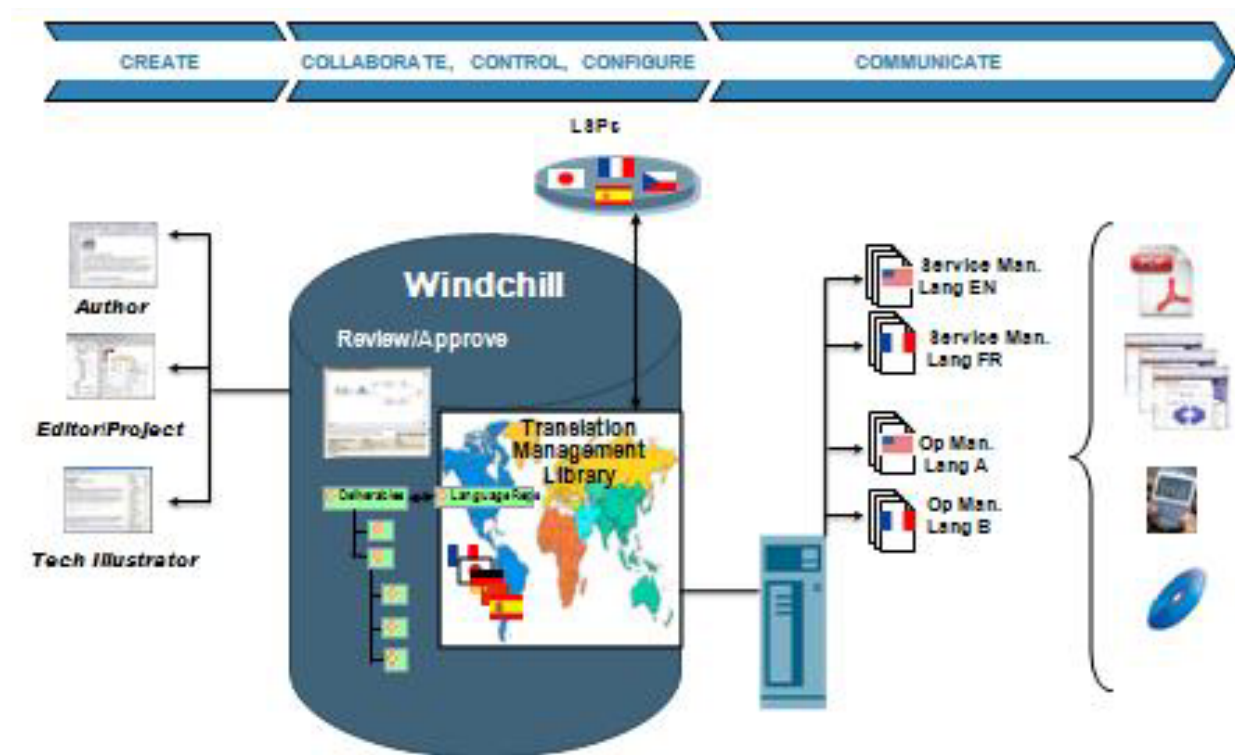
Import Translation Package

- Import and Check-in translated content
- Notify Translation Coordinator
- Generate delivery formats (pdf, etc.)
- Route to Reviewers

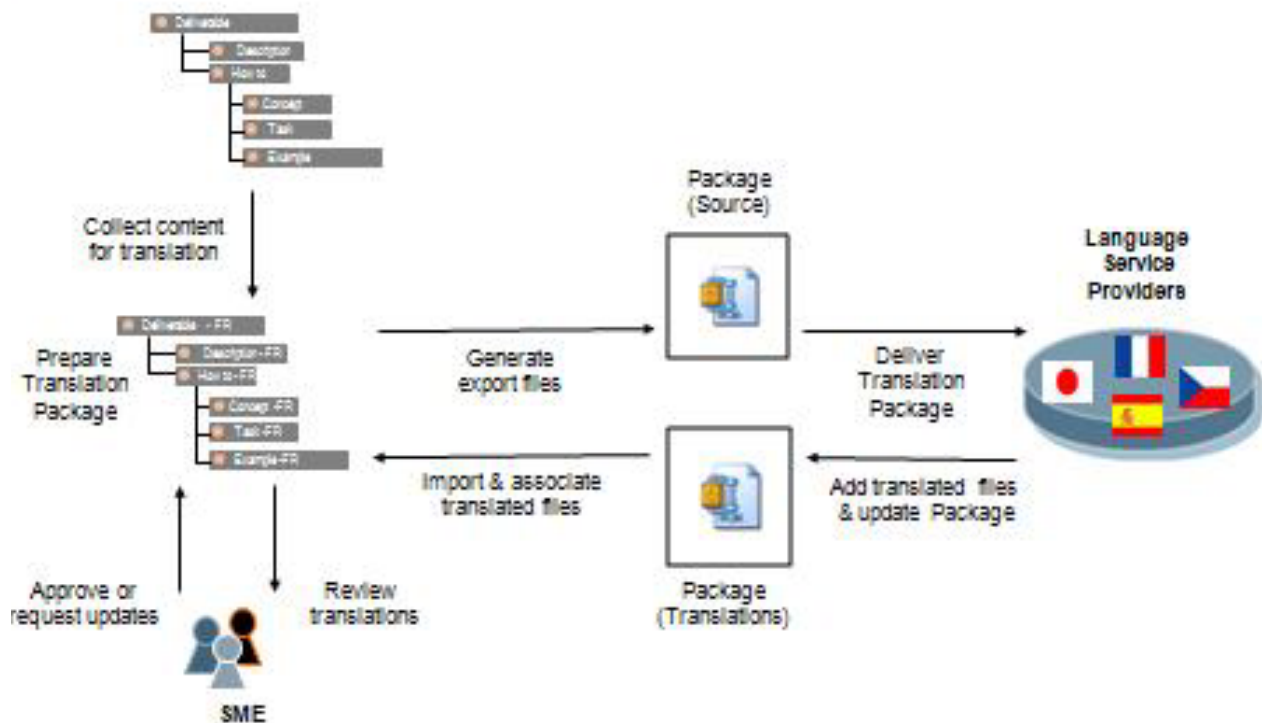
Translation Management Library – Configuration Options

- Project or Library for localized content
 - Folder for localized publications
- Languages available to select for translation
- Export Package folder on filesystem
- Localization SoftType
- Lifecycle to assign to Translation Package

Translation Management Library System



Translation Process



Translation Management Library - Benefits

- Only translate content that is new or revised.
- No longer have to wait for the entire manual to be ready before translation begins. Objects that have been approved become candidates for translation immediately. Control over which objects are sent to translation (grouped or singularly) resides with the Translation Coordinator.
- Eliminate manual replication and re-formatting of content that is translated
- Automatic creation of localized objects based on the master language document structure for all languages with a single selection made by the Translation Coordinator
- Master content is associated with localized versions in Windchill
- Ability to send reference material with translation package.
- Ability to exclude objects that should not be translated (Example Graphics)
- Implements industry best practice for translation workflow between Authors, Editors, Reviewers and Localization Service Provider
- Provides clean interface between Windchill and Localization Service Provider or Translation Management System.
- Reduces content cycle time for localized versions

[Back To Top](#)

Tips of the Month

Surfacing Tips

[Click Here To View](#)

[Back To Top](#)

Tips of the Month

Boxing Paragraphs in Arbortext

Boxing Overview

The **boxing** category is a formatting construct that encloses specified elements-in-context with four rules which form a box. Inline style boxing generally boxes a line of text; it prevents line-breaking of the content, but permits other material to appear on the same line before or after the boxed material. Display style boxing allows text within to wrap into a paragraph, but implies a line break both before and after. Once a characteristic is set for this category, any characteristics that are not explicitly specified will default. If no default value has been specified in the default environment, a system-dependent default is used.

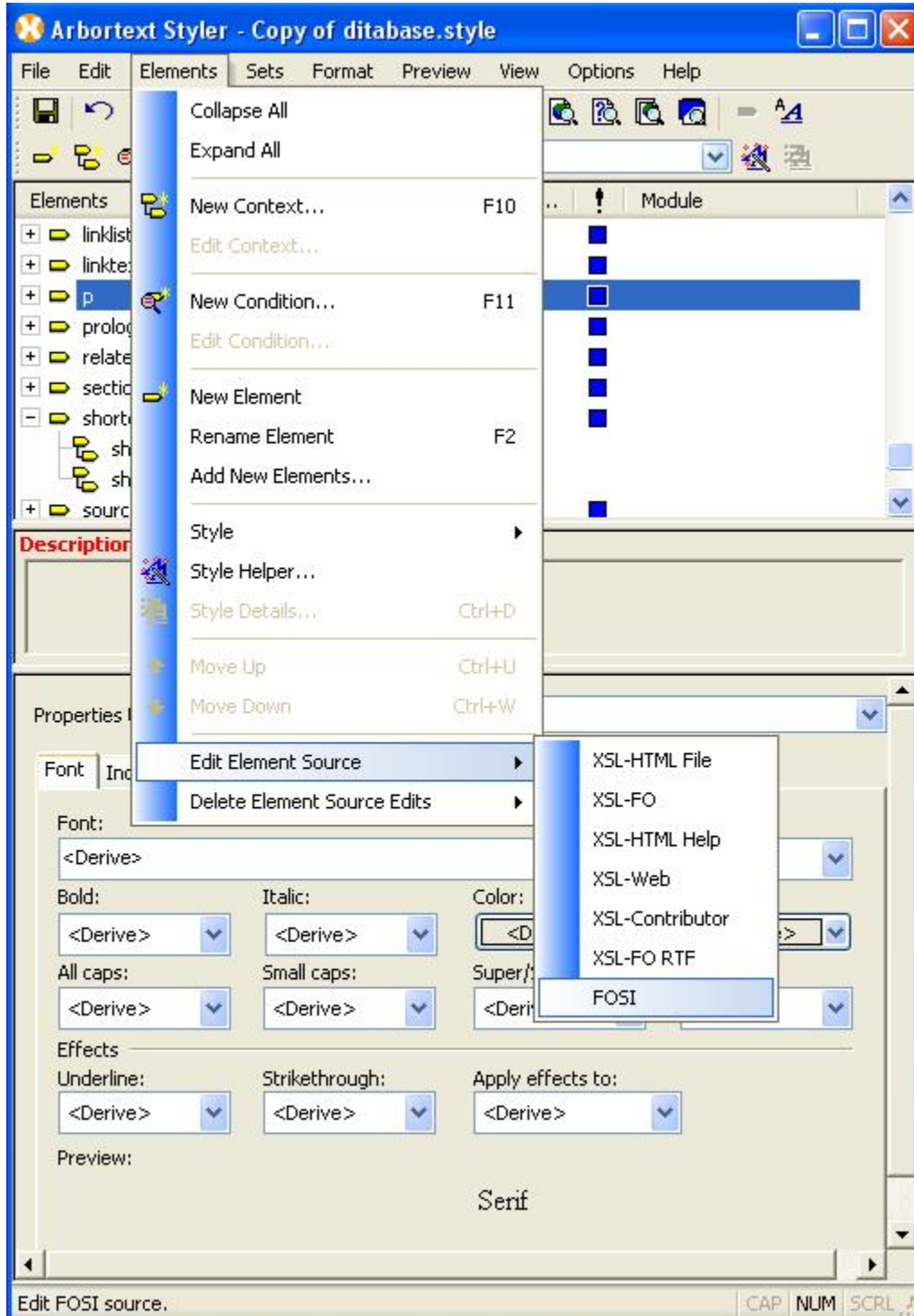
You can, for example, box a paragraph or a chapter heading. Whatever element(s) you specify, one box cannot exceed one page.

The size of the box is determined by four offset characteristics. The default for offset is zero (unless a relative offset origin is set). A box formed with all offsets equal to zero will encase the element with a box that barely brushes the edges of the text on all sides. A positive offset value will move a box rule outward, away from the element.

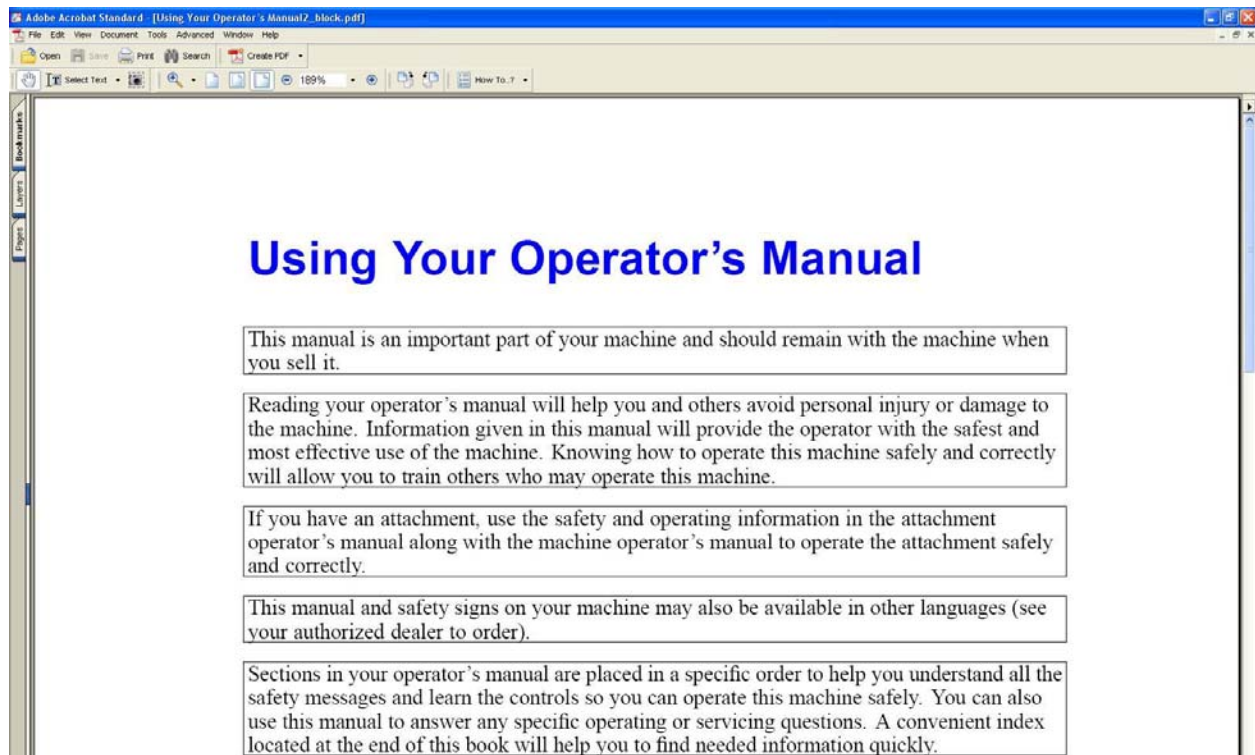
Three characteristics (**top relative offset**, **bottom relative offset**, **side relative offset**) provide a way to set the zero offset origin relative to a zero position that you specify. The rules which form the box (the outline) can be customized. When the interior color (*inclr*) is set to `black` (`#000000`), the interior percent provides color density inside a box, giving precise shades of gray.

Enable Boxing around Paragraphs for PDF/Print Composition

1. With a document open in Styler, select the paragraph element from the elements list
 - “p” is the paragraph element for DITA
 - “para” is the paragraph element for Docbook
2. From the **Elements** menu, select **Edit Element Source** > **Fosi**



Published Example of Boxing around Paragraphs



[Back To Top](#)

Announcements

Educational Resource Library

Learn things you always wanted to do - but didn't know you could.

This one stop educational resource library will help you learn more about PTC Solutions and provide you with technical materials developed by the product experts to help you become more productive.

Get tutorials, how-to videos and expert advice for:

- Pro/ENGINEER
 - Conceptual and Industrial Design
 - Detailed Design
 - Simulation/Analysis
 - Production
 - Design Collaboration
- Windchill PDMLink
- Windchill ProjectLink
- Pro/INTRALINK
- PTC Online Tools

Check out the [Educational Resource Library](#) today.

PTC Tips & Techniques Newsletter Archives

Miss an issue! Can't find that awesome technique you read about? Fear not, you can click on the link below and go through our Customer PTC E-Newsletter archives.

[Click Here To Access](#)

It's better than finding the Ark of the Covenant!

PTC Tips & Techniques Webcasts: Work Smarter. Not Harder.

Click below to see regularly scheduled Tips & Techniques technical Webcasts that are designed to provide you with the most popular time-saving tricks that Pro/ENGINEER users of all skill levels will find useful. Get more out of your maintenance dollars!

[Tips & Techniques: Work Smarter Not Harder!](#)

E-PROFILES IS HERE!!

We have been eagerly anticipating the debut of the new electronic version of Profiles Magazine and now it is here! This new web site will supplement the print edition of the magazine and will

provide new useful features not feasible with paper media. e-Profiles will provide you with 24x7, worldwide access to key information previously available exclusively in the print version. "Tips & Tricks," a popular feature pioneered by Pro/USER, has also moved to the web and will be expanded as the site matures.

Please take a few minutes to check out this new web site. We don't think you will be disappointed.

<http://profilesmagazine.com/>

[Back To Top](#)

Upcoming Events & Training Class Schedules

Upcoming, 2009 Your local Pro/Engineer User Groups
<http://www.ptcuser.org/rugs/>

June 7 – 10, 2009 Orlando, FL USA
PTC/USER World Event
<http://www.ptcuser.org/>

Events

Our seminars and conferences seek to provide you with relevant information regarding product development trends in your industry as well as innovative software learning experiences. Think of them as a constructive day off where you can share experiences and swap ideas with your peers.

If you can't manage to get away, we'll bring it to you. Check back often for regularly scheduled live webcast events.

[You're Invited to Attend...](#)

Please visit the [PTC Education Services](#) website for the latest training information including course descriptions, schedules, locations, and pricing.

- Attend a course at any PTC Center and receive a **free** copy of Pro/ENGINEER Wildfire Student Edition!

<http://www.ptc.com/services/edserv/index.htm>

Live Instructor-Lead Virtual PTC Training Courses

Virtual Classrooms provide interactive learning with a trained PTC instructor in convenient and manageable sessions that last approximately 4 hours over a series of days. It's easy to join a class right from your desk using a phone or voice-over IP technology.

Sessions are performed just like a traditional ILT (including interactive exercises where you and the instructor can work on lab exercises together) and feature some of our most popular ILT courses. These sessions cover the exact same material as the traditional ILT in-center courses. Also look for some of our most frequently requested mini-topics delivered in the same format that are only an hour - two hours in duration.

If you have any questions about these sessions or would like to see getting other courses, not on this list, on the schedule please feel free to contact me for more details. They are a great way to bring training to you without you having to worry about location or being out from work for long stretches.

You can register for these sessions just as you would for any normal ILT class either by:

1. calling order admin at <http://www.ptc.com/services/edserv/training/registra.htm> or
2. you can go to PTC University directly at <http://www.ptc.com/learning> and submit a registration request directly. All you have to do is search the catalog by typing in “virtual” in the search field and you will see a listing.

PTC

Note: This PTC E-Newsletter will continue to be used for the following:

- 1) Inform you on events related to PTC products (user groups, conferences, training schedules, etc.)
- 2) Educate you on solutions that are available at PTC
- 3) Tips & Techniques using PTC Products

Note: These messages are compiled in the local PTC office and will be distributed via e-mail.

[Back To Top](#)