



PTC Product Focus: [Bridging the Gap Between Industrial Designers & 3D CAD](#)

Tips of the Week: [5 Miscellaneous Pro/ENGINEER Tips](#)

Announcements: [Most Recent Announcements](#)

Upcoming Events & Training Schedule: [Events & Training Schedule](#)

PTC Product Focus

Bridging the Gap Between Industrial Designers & 3D CAD

Pro/CONCEPT Hold that thought

It happens when you least expect it. You suddenly come up with a brilliant idea for a product design (or redesign), and then you scramble for something, anything—a napkin, a scrap of paper—to quickly sketch your rough idea before it fades away.

Pro/CONCEPT is the all-inclusive digital sketching tool that lets you conceptualize without limits. With integrated sketching and modeling in the same environment, you now have the freedom to brainstorm without first having to figure out which tool to use.

The main benefits of this concept tool are:

- Digital brainstorming
- Integrated sketching and modeling
- Easy to learn, easy to use
- Flexible and fast, quickly explore lots of shapes and forms
- Freeform shape creation in either precision or loose sculpting style
- Output image and geometric data to production modeling systems



Of course, it integrates seamlessly with Pro/ENGINEER and ProductView so collaboration with peers, clients and suppliers is a snap. So go ahead, start turning the 20 ideas you had in traffic this morning into truly innovative product designs.

Pro/CONCEPT 2.0 is now available as well on Mac OS X (Jaguar and Panther).

Click [Pro/ENGINEER Conceptual and Industrial Design](#) for more details on how designers can enjoy a complete set of tools for sketching, image retouching, curve and facet modeling, painting 3D designs and real time and photo-realistic rendering.

[Back To Top](#)

Tips of the Week

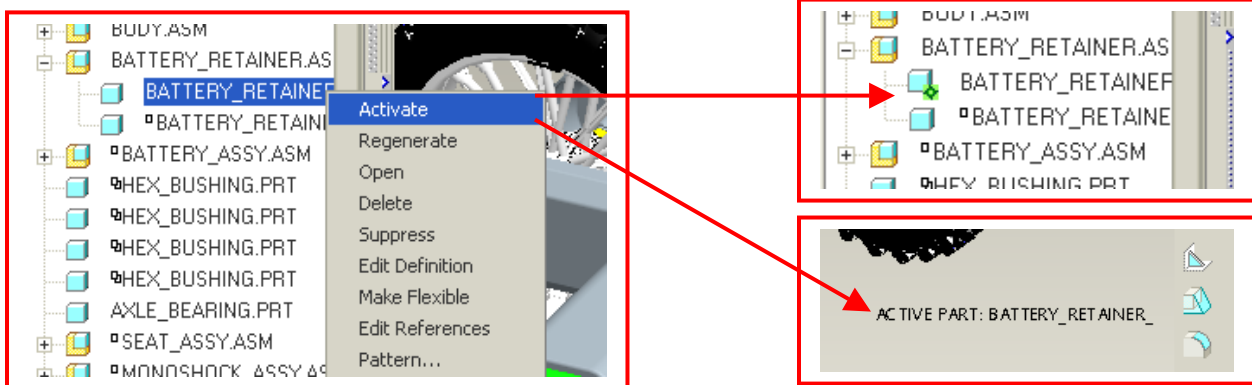
5 Miscellaneous Pro/ENGINEER Tips

- 1) Modify → Mod *****
- 2) Dynamic Modification of Sketched Entities w/out Being in Sketcher
- 3) Access to Dimensions of A Feature Comprised of Multiple Sketchs
- 4) Using Wild Cards to Filter for Files when Opening Files
- 5) How to Automatically Filter for Specific Files

1) Modify → Mod *****

In Pro/ENGINEER 2001 and before, one would need to go to **Modify → Mod Part** in the assembly and then pick the component to perform some operations at that level. The same would be req'd to modify a sub-assy; **Modify → Mod Subasm**

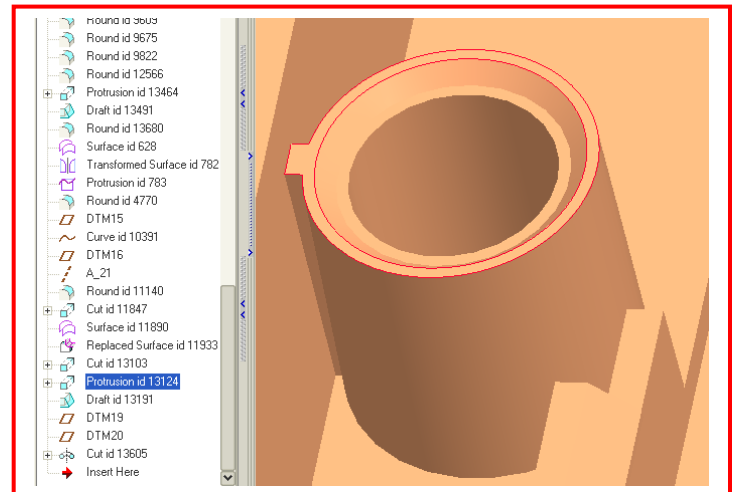
In Pro/ENGINEER Wildfire, all you need to do is highlight the component or sub-assy and do a RMB pull-down and select **Activate**. You will know that the selected component / sub-assy is active when u see a **green star** appear besides the name or look for the Active Part or Active Sub-Assembly in the bottom right corner.

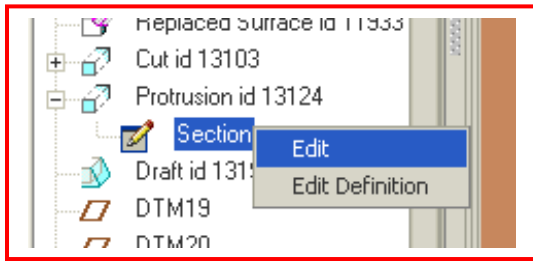


2) Dynamic Modification of Sketched Entities w/out Being in Sketcher

In Pro/ENGINEER 2001, when you selected a feature to modify it, you may see a hand pop-up and you could be dynamically modifying the feature's original sketch. However depending on where you picked, this may not have been exactly what u wanted.

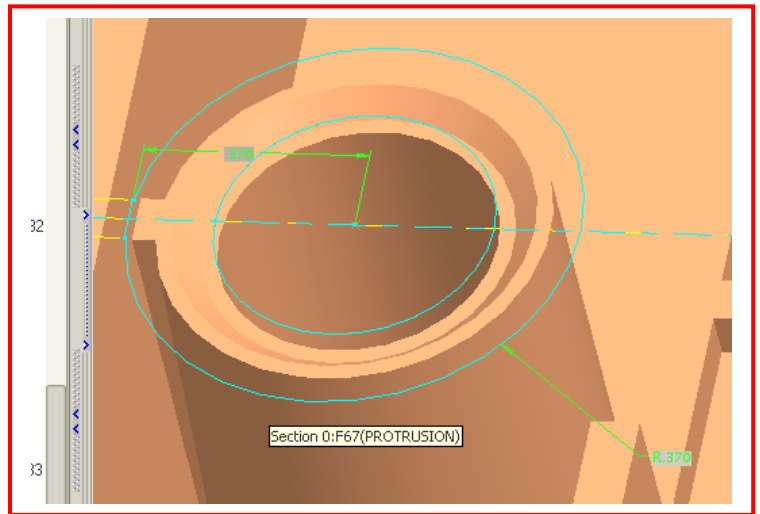
In Pro/ENGINEER Wildfire, if you specifically want to dynamically modify a feature's sketch w/out having to go **Edit Definition** and back into sketcher, you can just expand the feature and select on the feature's sketch in the model tree and do a RMB pull-down and select **Edit**.





You will see a HAND for your cursor as you hover over the sketched entities.

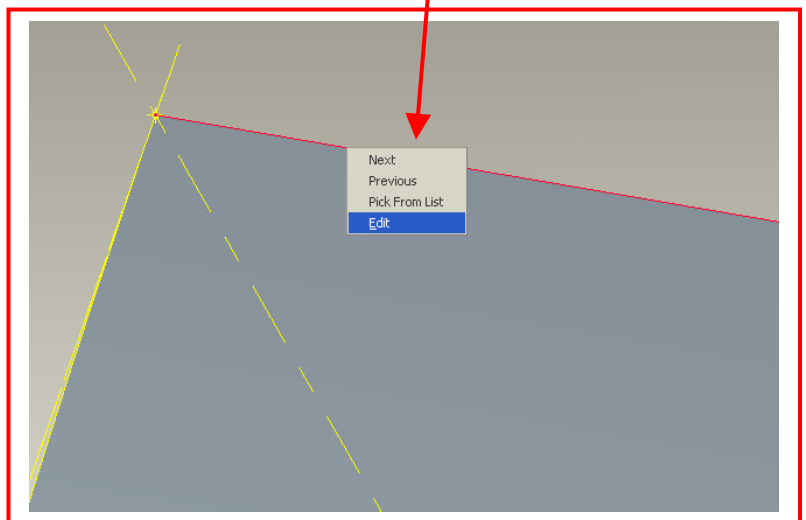
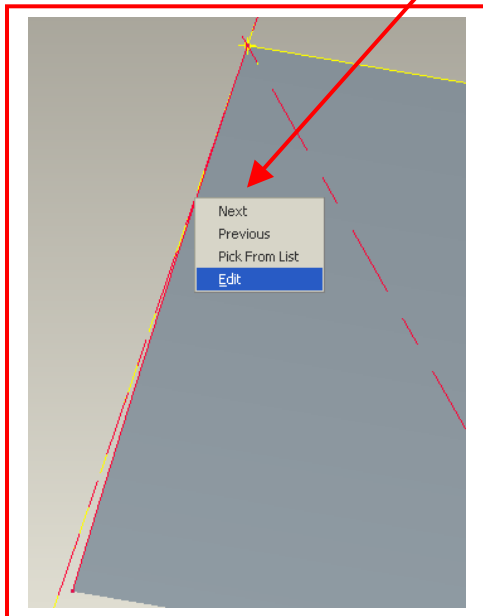
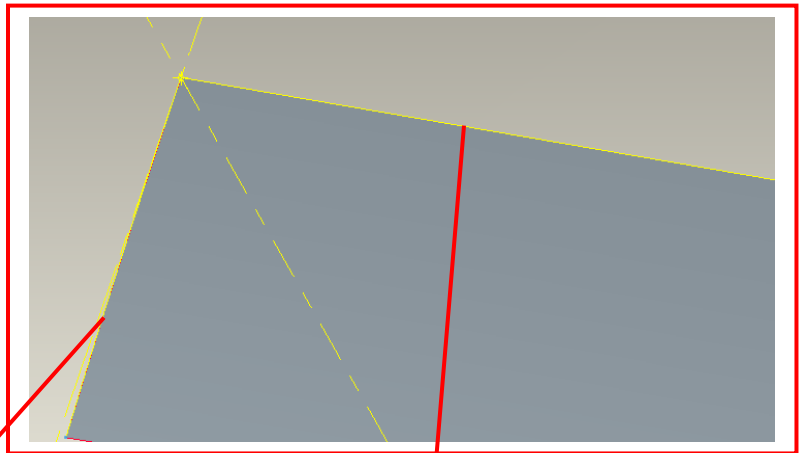
Unfortunately the image to the right does not show the HAND as I cannot capture the image of the cursor. You'll just have to take my word for it. ☺



3) Access to Dimensions of A Feature Comprised of Multiple Sketches

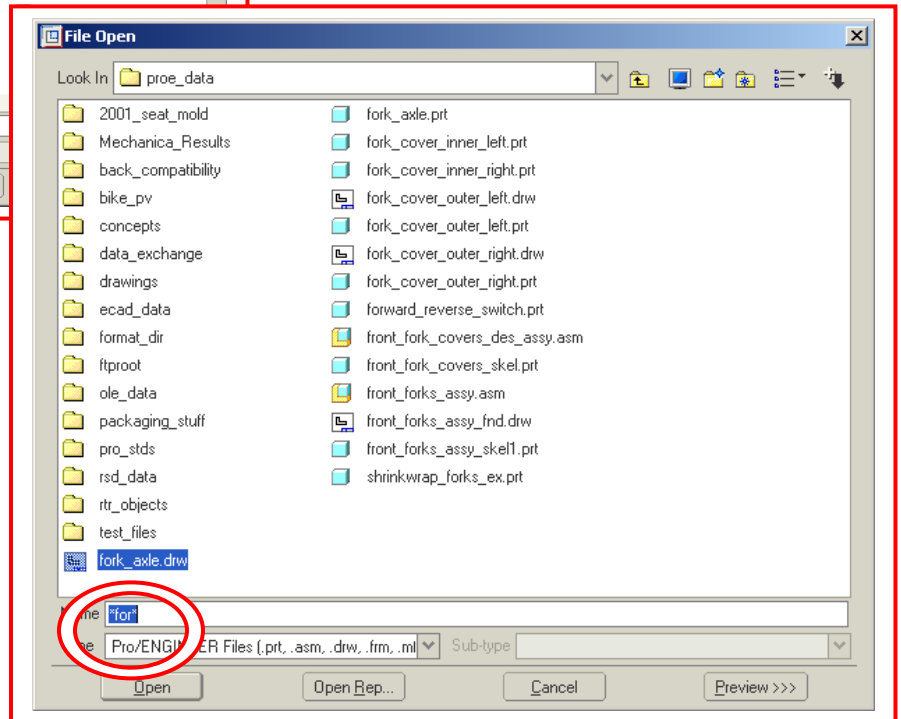
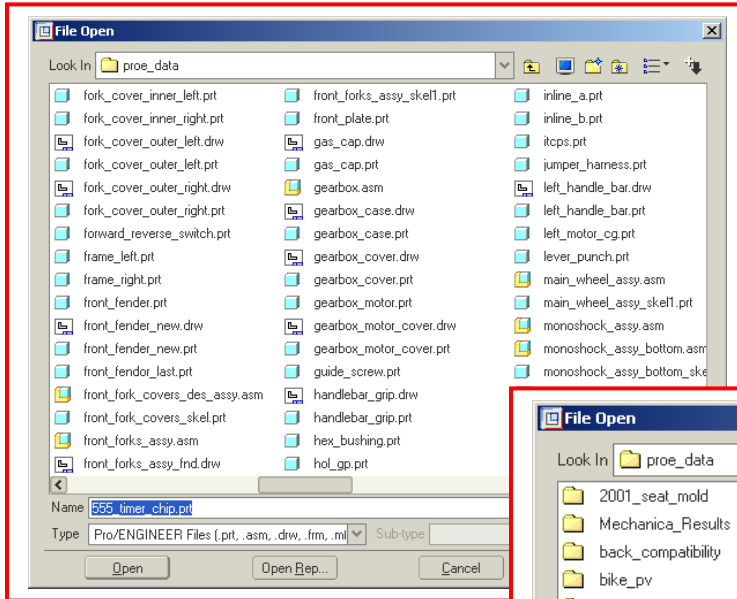
Sometimes when you hit **Edit**, you do not see the dimensions of the feature. It is quite possible that the feature itself has more than one sketch for its creation. An example might be something like this swept feature ...

If you don't see any dimensions, then simply select one of the sketches and RMB pull-down **Edit**.



4) Using Wild Cards to Filter for Files when Opening

When you go **File** → **Open**, instead of using the scroll bars to find your files or trying to remember and type in the whole name of the file, use Wildcards to filter out the list for you. In this example, I'm entering ***for*** in my Name box.

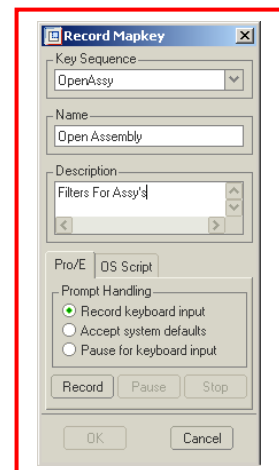


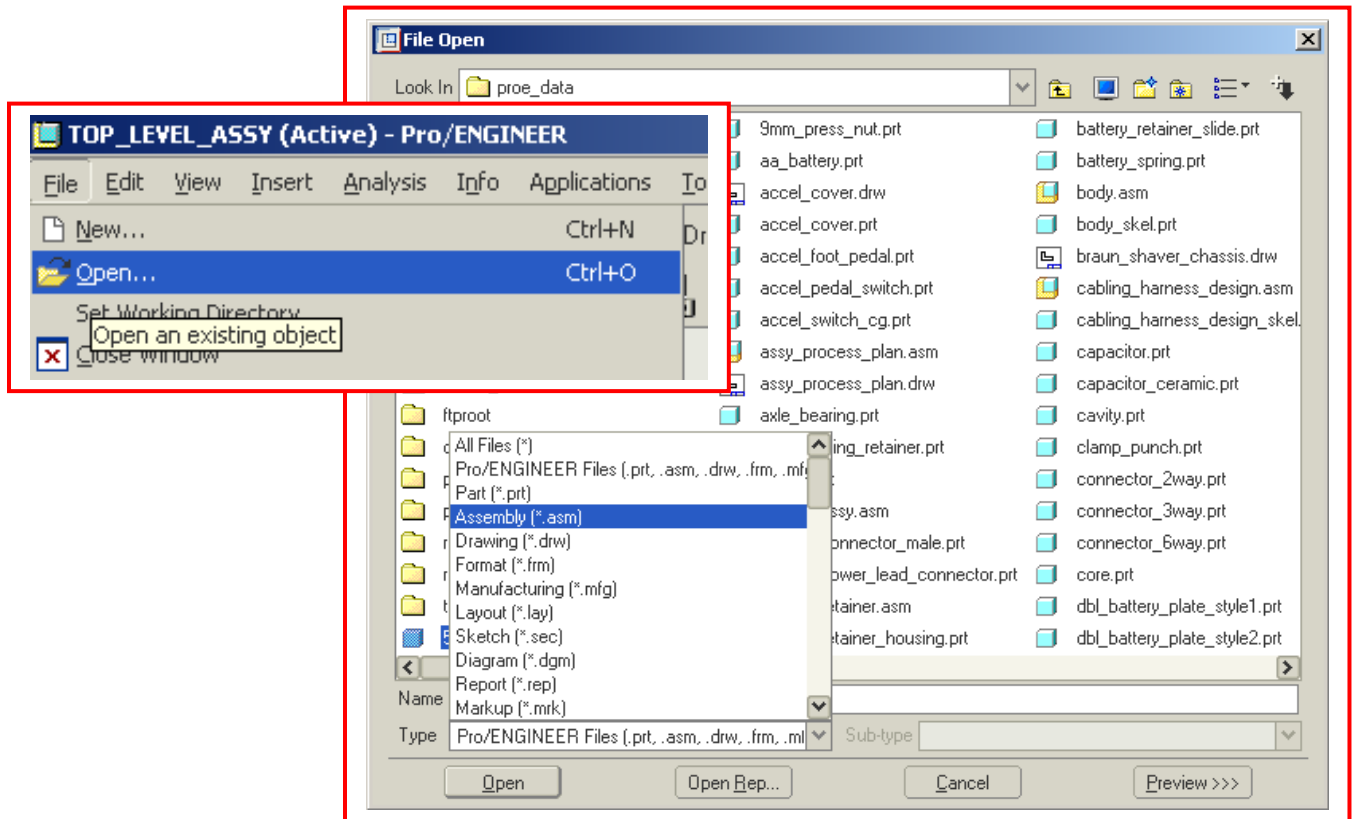
5) How to Automatically Filter for Specific Files

Let's take this a step further.

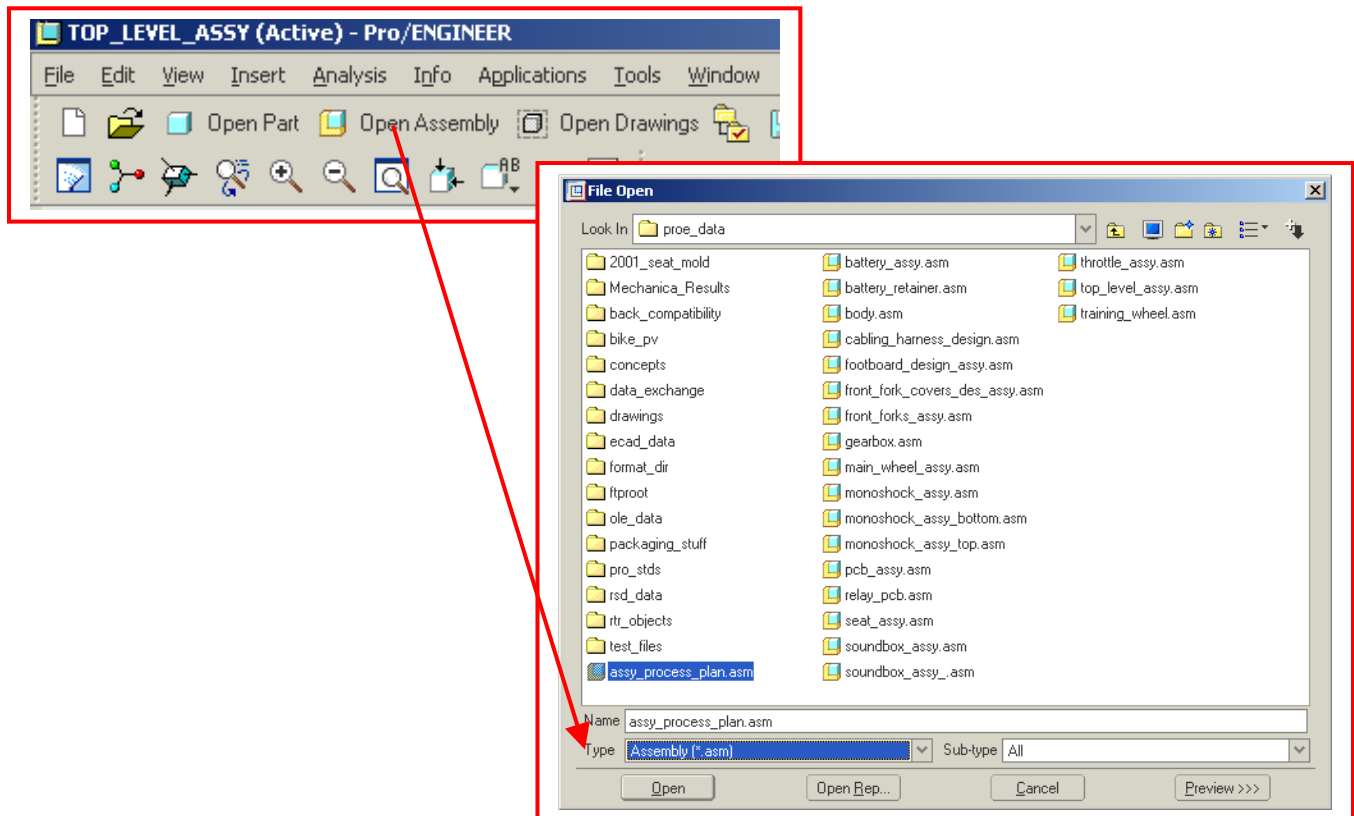
Why not have a **File** → **Open** Part files only, or **File** → **Open** Assembly files only or a **File** → **Open** Drawing files only?

It's quite easy to set-up. Simply record a mapkey for **File** → **Open** → and filter for a specific file type.





Add it to your icon list and voila, instant filtering for file types!! Don't forget that you can also show just "icons", only "text", or "both icons and text" as shown below.



[Back To Top](#)

Announcements

PTC Tips & Techniques Webcasts: Work Smarter. Not Harder.

Click below to see regularly scheduled Tips & Techniques technical Webcasts that are designed to provide you with the most popular time-saving tricks that Pro/ENGINEER users of all skill levels will find useful. Get more out of your maintenance dollars!

http://www.ptc.com/appserver/it/icm/cda/template_lib/events/series.jsp?&im_dbkey=11442&icg_dbkey=141

Special Hardware offers for customers updating to Pro/ENGINEER Wildfire

http://www.ptc.com/partners/hardware/current/wildfire_tlo.htm

<http://www.3dlabs.com/PTC/>

PTC Sponsored Events

Click below to see PTC sponsored events:

<http://www.ptc.com/company/news/events/index.htm>

Thinking About Pro/ENGINEER Wildfire? Check this out.



<http://www.ptc.com/go/engineering/index.htm>

E-PROFILES IS HERE!!

We have been eagerly anticipating the debut of the new electronic version of Profiles Magazine and now it is here! This new web site will supplement the print edition of the magazine and will provide new useful features not feasible with paper media. e-Profiles will provide you with 24x7, worldwide access to key information previously available exclusively in the print version. "Tips & Tricks," a popular feature pioneered by Pro/USER, has also moved to the web and will be expanded as the site matures. Future plans include several foreign-language editions of Profiles for our many international readers. Currently, Profiles is printed in English and Japanese.

Please take a few minutes to check out this new web site. We don't think you will be disappointed.

<http://profilesmagazine.com/>

[Back To Top](#)

Upcoming Events & Training Class Schedules

Upcoming, 2004 Your local Pro/Engineer User Groups
<http://www.prouser.org/rugs/>

June 13 - 16, 2004 Nashville, TN
Pro/USER International Conference
<http://www.prouser.org/>

Please visit the [PTC Education Services](#) website for the latest training information including course descriptions, schedules, locations, and pricing.

- Attend a course at any PTC Center and receive a **free** copy of Pro/ENGINEER Wildfire Student Edition!

<http://www.ptc.com/services/edserv/index.htm>

PTC

Note: This PTC E-Newsletter will continue to be used for the following:

- 1) Inform you on events related to PTC products (user groups, conferences, training schedules, etc.)
- 2) Educate you on products that are available at PTC
- 3) Tips & Techniques using PTC Products

Note: These messages are compiled in the local PTC office and will be distributed via e-mail.

[Back To Top](#)